

digital

MAYNARD

DIGITAL THIS WEEK



Volume 8 Number 1

January 12, 1981

Giordano named Product Group manager

Digital realigns large computer group

Digital has realigned its large computer business to form a Large Computer Product Group (LCG), according to Andy Knowles, vice president, Technical Group. LCG will have total operational responsibility worldwide for Digital's 36-bit DECsystem-10 and DECSYSTEM-20 computer families.

Marketing, long-range planning and centralized support services will be added to the group's on-going product development. In recent years, marketing of LCG systems was managed by various product groups throughout the company.

Rose Ann Giordano, currently marketing manager for the Technical Group, has been appointed LCG Product Group manager. Andy Knowles said, "Under Giordano's direction, the new group will be responsible for

the management of all Digital's 36-bit computer products sold into the company's principal markets throughout the world.

"Restructuring our LCG organization follows our strategy to reinforce and 'grow' our high-end timesharing business and to meet user requirements for future development of 36-bit products."

Knowles said Giordano, with over 15 years experience in the computer industry, is uniquely qualified to manage the growth of the LCG business. For the past two years, Giordano managed the marketing activities of the Technical Group. She came to Digital after nine years with Xerox Corporation as the New England District manager for computers and electronic printing systems in the Xerox Business Systems Division. She also held positions as Regional Marketing manager and Systems manager in New York



Rose Ann Giordano is the manager of the new Large Computer Product Group.

City. Prior to Xerox, she held a variety of system analysis and program development positions at Bell Telephone Laboratories in New Jersey.

A new addition to Digital: Energy and Environmental Affairs manager

Digital has combined the position of Corporate Energy Engineer and the need for an environmental expert and established an Energy and Environmental Affairs function. Jim Rogers has been appointed the manager to be part of Corporate Plant Engineering under Jim Magaldi.

Jim's primary role in environmental issues will be to insure that Digital, through the U.S. and Puerto Rico, are in compliance with all laws and regulations. He must keep up with the

frequent changes in legislation. And Jim will insure that energy is used wisely and conservation methods used whenever possible at Digital.

Before coming to Digital, Jim was energy and environmental director at Raytheon for 10 years.

Jim is also active in environmental issues in a way that will impact the whole Commonwealth of Massachusetts. On Dec. 3, he was sworn in as a member of the Massachusetts Hazardous Waste Facility Site

Safety Council. This 21-member council will oversee the process of siting hazardous waste treatment facilities in Massachusetts.

John A. Bewick, secretary of Environmental Affairs, said, "We have the council to help solve Massachusetts' hazardous waste problem by locating facilities to treat chemical wastes and establishing a secure chemical landfill so the treated materials can be placed safely in the

continued on page 2

In-House Field Service forms new branch

In-House Field Service has formed a Terminals and Word Processor Branch responsible for servicing all terminals and word processors in the Greater Maynard Area. This organization represents an ever-increasing commitment to fast, high quality service and to keep service costs to a minimum.

Effective immediately, all in-house customers in the Greater Maynard area: Parker Street, The Mill, Acton, Nagog, Powder Mill Road, West Concord, Hanscom Field, Sudbury, Lexington and St. Bridget's, requiring repair service on terminals and word processors should call DTN 223-8865.

In addition, this DTN should be used to obtain maintenance contracts or to upgrade existing contracts to accommodate those terminals and word processors not currently under service coverage.

Warren (Buddy) Lewis has been promoted as branch manager responsible for the Terminals and Word Processor Branch. Bud has been with Digital since 1968, and for the past 3½ years, he has been the unit manager group specializing in VAX and 11/70s in the Boston Metro Branch.



Blue eyes, golden curls and a personality that warms the heart on a cold day, Missy Jablonski, the 1981 March of Dimes National Poster Child, visited Digital for a very special helicopter ride with David Wainright. Partially paralyzed, Missy underwent her first session of corrective surgery when she was one day old. Between a television appearance and a Celtics game, five-year-old Missy greeted 250 employees at the PK3 cafeteria before her ride arranged by Alice Bucca, Employee Activities, and Laura Morris, Community Relations.

A reminder to get back into circulation in 1981

With the new year approaching, it is time for resolutions and for getting back into circulation. Through your blood, that is.

The next blood drive is scheduled for:

Tues., Jan. 20 at the Mill from 10 a.m. to 4 p.m.

Wed., Jan. 21, at the Mill from 9 a.m. to 3 p.m.

Thurs., Jan. 22, at Parker Street from 9 a.m. to 3 p.m.

Call the Bloodline for an appointment. At the Mill call DTN 223-6700 or at Parker Street dial DTN 223-6766. Appointments are at 20-minute intervals.

Commuter corner

Find out how to cut down on commuter costs by contacting the Commuter Transportation Department, DTN 251-1525.

Call the following DTN numbers to join these routes.

VANPOOLS

To Maynard

from Chelmsford via Route 27, Clifton Temple, DCV 8, 223-6833.

To Tewksbury

from Groton, Littleton, Westford, starting van, Hank Poulter, 223-6884.

To Mill

from Medfield, Joseph Bruno, 223-3949.

To Powder Mill Road

from Northboro, Pat Priore, 8:15-5, 223-5242.

A new addition

continued from page 1

ground. The council as an impartial body will insure all parties are treated fairly. The council does not come under any one governmental agency, and it is free of governmental restraints and controlling influences."

Governor King said at the swearing in ceremony, "All of these individuals are committed to insuring that Massachusetts resolves its hazardous waste problem in a way which optimizes the public health of our citizens and the quality of the environment."

The council will be responsible for reviewing the environmental and socio-economic impact of hazardous waste treatment facility on a community. They will act as coordinators between developers and potential sites, and review the community's compensation as a facility host. They will review all proposed sites and consult with the Department of Environmental Quality Engineering (DEQE).

Massachusetts has 51 confirmed hazardous waste sites identified by DEQE.

DIGITAL THIS WEEK



Editor: Christine Medeiros

Correspondents

LJ - Rochelle King	282-2164
BO - Arthur Bowes	281-5616
BU - Lil Holloway	249-2396
HL - John O'Buck	225-4455
ML - JoAnn Tunnessen	223-5840
MR - Janis Greene	231-6055
NA - Theresa Cash	233-2149
NR - Ann MacPherson	234-4548
TW - Gloria Flaherty	247-2552

Send story ideas to your plant correspondent, or to: DTW, PK3-1/K23. Or call 223-5042. Direct Marketplace ads to Alice Christian, PK3-1/K23.

DTW is published for employees of Digital Equipment Corporation in the Maynard, Mass area.

News briefs

Deadlines for DTW

The next three issues of *Digital This Week* and deadlines for submitting copy are:

Jan. 26 issue - Jan. 15 deadline
Feb. 9 issue - Jan. 29 deadline
Feb. 23 issue - Feb. 12 deadline

It's tax deductible

Corporate Benefits advises employees that their contributions for medical and dental coverage may be tax deductible. The last paycheck of 1980, received on Dec. 31, reflected the total amount of your contribution toward medical and dental care for the year. This figure can be used in helping you itemize your deductions on the long form in filing your Federal Income Tax.

Employee Stock Plan reminder

Employees who are participating in the December to June payment period of the Stock Purchase Plan should be aware that the Supplementary contribution will begin on the seventh week of the payment period and will be deducted from their pay starting Jan. 15. For further information regarding this additional deduction, contact your P.S.A.

Notice from Corporate Immigration

All non-U.S. citizens are reminded that an Alien Address Report must be filed with the Immigration and Naturalization Service each January. Cards for this report are available at any U.S. post office.

UMass comes to Digital

Representatives from the University of Massachusetts, Amherst, will be at the following locations for registration for the Spring semester courses in the Department of Electrical and Computer Engineering:

Jan. 27 Parker Street Cafeteria
10 a.m. - 3 p.m.
Jan. 28 Marlboro Cafeteria
10 a.m. - 3 p.m.
Jan. 29 Mill Cafeteria
10 a.m. - 3 p.m.

Sorry, wrong number

When dialing any toll or overseas call from Digital be sure to dial the correct number. If you reach a wrong number, call the Telephone Company operator and ask for credit on the call. Be sure to give the correct extension from which the call was made if you are at a Direct Inward Dial location.

DCU introduces Travelers Checks

American Express Travelers Checks will be sold at all Digital Employees' Federal Credit Union offices beginning in February.

The credit union will charge 50 cents per \$100 instead of the usual \$1 per \$100. The checks may be purchased in a variety of denominations. For more information, contact any DCU office.

On the move

Effective Jan. 19, the Corporate Credit and Customer Finance and the Computer Asset Management groups will be located at 101 Fourth Ave., Waltham, Mass. 02154. Their main DTN number will be 265-1400 and location code FJ.

Winterfest at Crotched Mountain

Two Winterfests at Crotched Mountain will be offered this year by the Maynard Employee Activities Committee. To be held on Jan. 31 and Feb. 14, this winter delight is only \$7 per adult, \$5 per junior (ages 6-14) and children under six free.

In addition, 50 percent lift tickets will be available to employees on the dates of the Winterfest. Between 2:30 and 10:00 p.m., the discount rates are \$6.50 per adult and \$5.50 for juniors. Between 4:30 and 10:00 p.m., the tickets are \$4 adults and \$3 juniors. There will be equipment rentals for \$8 a day and a cross-country skiing trail fee of \$2.

Crotched Mountain, Franconia, N.H. is about 75 miles from Boston. Buses will be provided upon request at an additional cost. Obtain order forms from your local Employee Activities department.

Ski Club offers ski weekends to all employees

The Digital Ski Club has planned three fun-filled weekend bus trips for 1981. These trips are open to all Digital employees and their guests and include bus transportation, lodging, lift tickets and provisions for cross-country skiing. For trip application or more information, contact the respective trip chairperson listed below:

Location	Weekend	Cost*	Chairperson
Sugarbush	Feb. 7	\$95	Connie Sherman, 223-9425
Sugarloaf	Feb. 28	\$110-\$114	Carol Skerry, 231-5603
Smuggler's Notch	March 21	\$85	Sandy Brooke, 223-7577

*There is a \$5 surcharge for non-Ski Club members. Membership fee to join is also \$5.

Manufacturing Groups Staffing and Placement personnel make long range plans

In December, 52 Staffing and Placement personnel from Digital's Manufacturing Groups, including Canada and Puerto Rico, conducted a two-day, long-range planning symposium.

The focus on the symposium was the interactive aspects of an effective Staffing and Placement organization in the Manufacturing Groups and the need to improve managerial skills and to increase business knowledge. These themes were reinforced with presentations by Chuck Poe, manager of Staffing and Placement for manufacturing Organization Planning and Employee Development (OPED), George Rossi, Corporate Staffing and Placement manager, and Greg Plakias, manager of Manufacturing OPED.

Greg provided an overview of the Manufacturing organizational structure and the importance of the linkage between human resources and the business objectives of the Manufacturing Groups. George Rossi briefed the group on Digital's expected growth for the 1982-1986 period and highlighted the demographic changes in the Staffing and Placement marketplaces which would impact the group's placement strategies.

Handicapped placement at the Terminals Group in Phoenix was described by Frank Thompson, Staffing and Placement manager in Phoenix, as a "philosophy, not a program." Frank detailed the successful and non-traditional sourcing approaches utilized and has resulted in statewide recognition for the plant's handicapped placements.

Attendees agreed that the symposium clearly reaffirmed Staffing and Placement as an essential part of effective human resources management, particularly in a high growth company. They also recognized the value of their selective, but increased interaction as an operational norm.



Planning is hard work. (Left to right) Noreen Leary, Rick Wacholz and Harry Crawford attend Manufacturing's Staffing and Placement's first long-range planning symposium.



Manufacturing's Staffing and Placement personnel rush to get back to work at the two day symposium held in December.

Office Education offers TECO course

Office Education is expanding its technical course offerings with a new one-day course for employees wishing to learn how to input and edit text on a DECsystem-10 and DECSYSTEM-20 using the text editor TECO.

Topics will include logging in and out, creating, editing and learning the numerous TECO commands and their formats. By the end of the course, students will demonstrate knowledge by completing lab exercises with 80 percent accuracy.

Classes will be formed based on demand. To enroll, send a memo with your name badge number, location/mailstop, DTN, cost center and manager's signature to Registrar, PK3-1/B11 or to the training coordinator at your facility.



Captain Gary T. Finerty, left, U.S. Naval Reserve, is congratulated by Rear Admiral Daniel T. Corrigan, Commander of Naval Reserve Readiness Command Region One, on his promotion as Commanding Officer of a Naval Reserve Unit in New England. He will command the Volunteer Training Unit-0108 attached to the Naval and Marine Corps. Reserve Center in Lawrence. Captain Finerty is a marketing manager at Digital's facility in Marlboro.

VLSI Short Course begins in January

LSI Semiconductor Design engineering will again be giving its VLSI Short Course, Jan. 25-Feb. 2, at Barlin Acres Conference Center in Boylston. The VLSI Short Course is an intensive seven-day introduction to the design and implementation of Very Large Scale Integrated Systems for engineers.

Following the course, there will be an optional chip design project which will allow students to practice the principles learned on an actual chip project. Chips designed will be fabricated and tested at the Hudson LSI facility. The chip design project will require half of work time for eight weeks and ample personal time. Participants in the project must have taken the VLSI Short Course. For registration information contact Lee Williams at DTN 225-4802.

Employee Education offers:

Practical Negotiations Workshop

A new, one day course (J1645-A) will help employees develop their negotiating skills. The workshop provides basic theory, tactics and planning as well as practical exercises in negotiating. Sessions will be held on Jan. 21; Feb. 18; and March 18.

To enroll in the course, send a memo to the Employee Registrar, BU/E29, with your name, badge number, mailstop, DTN, cost center, manager's signature, course title and (preferred) date. A complete course description is available from the Registrar at DTN 249-2676. All classes will be held at Educational Services at Bedford.

IQL User Course

The IQL User Course (J1535-A) has been expanded to two days. The course familiarizes students with the general structure of IQL and its features and functions. Emphasis is on demonstrations with short lectures serving as a guide for lab work on an interactive terminal. As a prerequisite, students should have a good user-level knowledge of TOPS-10 or TOPS-20 with respect to interactive terminal usages. The course will be held on Jan. 19 and 20.

Ticket sales

Concerts in Black and White series

Concert of Unity at Symphony Hall

Sunday, Feb. 15, 3 p.m.

Program includes Beethoven's Ninth and a specially commissioned work from composer Hale Smith. Soloists will be Daisy Smith, Valerie Waters, Kim Scown, Donny Ray Albert.

Tickets: \$12.00 each.

ORDERS MUST BE RECEIVED BY FEB. 9



New England Sportsmen Show

at the Hynes Veterans Auditorium.

Ted Williams will make guest appearance.

Feb. 18-22; Tickets: \$1.75 (regular \$3.50)

ORDERS MUST BE RECEIVED BY FEB. 12

The Big Band Benefit

for the Eliot Community Mental Health Center, Inc. featuring the DEC BIG BAND.

Feb. 27, 8-12 p.m.

Tickets: \$7.50 each

At the Sheraton Inn at Boxborough

ORDERS MUST BE RECEIVED BY FEB. 19.

Boston Boat Show

at Hynes Veterans Auditorium

Feb. 4-8

Tickets: \$1.75 (regular \$3.50)

ORDERS MUST BE RECEIVED BY JAN. 28

Ice Follies at Boston Garden featuring 1980 Olympic Silver Medalist, Linda Fratianne.

Feb. 19, 7:30 p.m.

Tickets: \$5.00 (regular \$7.00)

ORDERS MUST BE RECEIVED BY FEB. 12

Bruins vs New York Rangers

Thurs., Feb. 5, at 7:35 p.m.

at Boston Garden

Tickets: \$9 each

ORDERS MUST BE RECEIVED BY JAN. 28

Bruins vs Minnesota

Thurs., Feb. 26, at 7:35 p.m.

at Boston Garden

Tickets: \$7.50 (regular \$9)

ORDERS MUST BE RECEIVED BY FEB. 19

Bruins vs Buffalo

Sun., March 1, at 7:05 p.m.

at Boston Garden

Tickets: \$9 each

ORDERS MUST BE RECEIVED BY FEB. 19

Births

A son, Justin Eric, born Oct. 22, to Pat and Larry Meier. Pat works for the Engineering Group in Natick.

A son, Josh, born Nov. 8, to Manju and Dan Banerje. Manju works for the Software Distribution Group in Northboro. Dan works for the Education Computer Systems Group in Marlboro.

A son, John Christopher, born Nov. 15, to Fred and Diane L'Ecuyer. Fred is a manager in the Purchasing Group in Natick.

A son, Todd Anthony, born Nov. 28, to Jeff and Donna Cormier. Jeff works for the Maynard Board Shop.

A daughter, Elizabeth Luanne, born Nov. 16 to Lou and Betty Cesario. Lou is a systems analyst for Product Support MIS in Maynard. Betty is a secretary for LDP in Marlboro.

A daughter, Alana Beth, born Oct. 21, to John and Christine Nagle. John works for Mechanical Engineering in Tewksbury.

A son, Michael Christopher, born Oct. 31 to Jay and Patti Akers. Jay is a scheduler in Marlboro's Stockroom 15, and Patti is an incoming inspector.

A son, Jeffrey David, born Dec. 7, to Sue and Bob Hartford. Bob is a project technician in Storage Systems Development.

A daughter, Lauren Marie, born Dec. 8, to Mary Helen and Raymond Modeen. Mary Helen works for Manufacturing Test Applications, and Raymond works for U.S. Area Software Services.

A daughter, Cristina, born Oct. 5 to Marcia and John Bayle. Marcia works for Personnel Data Systems, and John works for System Performance Analysis at the Mill.

A daughter, Tricia Ann, born Nov. 29, to Tony and Patricia Membrino. Tony is an Educational Specialist at the Maynard Plant.

A son, Wayne Philip, born Nov. 19 to Michele and Wayne Palumbo. Michele works in Northeast Regional Field Service Billing in Waltham.

A daughter, Leah Caroline, born Nov. 24 to Charlie and Diane Carle. Charlie is a graphic arts specialist for MTG in Littleton.

A daughter, Kris Ann, born Nov. 15 to Joann and Allen Deacon. Allen works for Office Services in Marlboro.

A daughter, Kristin Noel, born Dec. 12 to Candis and Michael Stankus. Candis works as a stockkeeper for Plant Engineering in Hudson. Michael is a technician for Metallic Oxide Semiconductor (MOS) Product/Test Engineering in Hudson.

The marketplace

REAL ESTATE

WESTFORD, 8rm Garrison, 2bths, 4bdms, fam rm, frpl, 1A, \$90,000. Lynn, ML 223-8070; (617) 692-6364.

HOUSE, 9rms, 4-5 bdms, 2½ bths, screened porch, 2 car gar, \$115,000. Terry, ML 223-5738.

RANCH, contemp, new, 3bdms, 1½ bths, wood stove hook-up, 1 3/4A. Judi, BY 245-5315; (617) 422-8441.

RENTALS

TOWNHOUSE/CONDO, Framingham, 3br, 2½ bths, avail Jan. '81, \$610+util. Sid, MR231-5940; (617) 877-7006.

APT, Maynard, 2br, modern, walk dist to Digital, \$350/mo. Dian, PK 223-6387.

APT, Marlboro, 1br, avail 2/1, 12 mo lease, \$375/mo incl ht, hot wtr, a/c. Hans, ML 223-3737.

HOUSE, Sudbury, dead-end st, split level, 3 yrs old, 3br, 1½ bths, fin bsmt, exc cond. Renuka, PK223-4501.

HOUSE, Stow, Ma, 8rm split-entry, 3br, frpl, w/w carpeting, \$625/mo+util. Bill, ML 223-3121.

HOUSE, Acton, 7rm, clean, energy efficient, convenient location. Priscilla, LK 226-7114.

SKI HOUSE, lmi from Mt. Sunapee, 5rms, 2br, wood stove, Mon-Fri, \$150; wkend, \$80. Paul, PK223-9149.

APT, Arlington, 1br, fully appliance, sublet 1/31 to 7/30, \$275 incl ht/hot water. Pat, MS223-1807.

HOUSE, Cambridge, charming cape, 140yrs old, 3br, 2 frpl, avail 2/1, \$775+util. Judi, ML 223-3853.

HOUSE, Tewksbury, 4br, frpl liv rm, din rm, appl kit, gas ht, porch, \$700/mo. Dick (617) 851-3212.

WANTED

ROOMMATES (2) share house, Newton, ½ mi to Rt. 128, \$225/mo+util. David, CF 251-1459.

WEDDING BAND to play Aug. '81, must be reasonable & play variety of music. Cathy, ZK 264-8212.

ELECTROLUX VACUUM CLEANER, metal tank type, with most attachments, gd cond. Paul, TW 247-2002.

ROOMMATE (M/F) share spacious 2br apt, Waltham, \$200/mo+util. Patrick, BU 249-2260.

ROOMMATE (F) share house with 2 others, Maynard, non-smoker, \$150+1/3 ht, elec. Kathleen, ML223-3515.

RIDE from Maynard to Hudson, 3 or 3:30 pm, will pay. Gus, ML 223-3509.

ROOMMATE to share 3br house in Hudson, \$210/mo incl util. Miriam, PK 223-7062.

ROOMMATE/HOUSEMATE (F) non-smoker, share 6rm hse, Maynard, Jan 1, pets negotiable. Edwina, AC232-2584.

ROOMMATES (1M, 1F), antique hse, Marlboro, br with frpl, sauna, \$295+util. Jeanne, PK223-6484.

ROOMMATE (M/F) to share 2br townhouse, Concord Greene, price negotiable. Bill, CF 251-1656.

ROOMMATE (M) share 2br apt, Marlboro, avail 1/15, \$105/mo+1/3 util. Frank, (617) 481-5608.

PETS

DOBERMAN (m), 2yrs old, gd with children, must have yard space, FREE to gd home. Linda (617) 486-3995.

PUPPIES, Golden-Retriever-German Shepherd mix (7 tans, 4 blks) ready 1/10, \$35. Debby, MS223-4763.

CARS

'74 TOYOTA CORONA MK II, gd cond, many new parts, low mi, \$1800. Ken, NR 234-4501.

'75 OLDSMOBILE STARFIRE, 40K mi, V6 230 std, p/b, am/fm, new brks, tires, batt. Magaly, ML 223-3926.

'74 DATSUN B210 H/B, 4spd, 35mpg, body rusted, gd rads, radio, \$500 or B/O. Dave, PK 223-9097.

'70 PONTIAC, 2 dr, manual, 70K mi, gd cond, new studded snow tires. Patrick, MR 231-6234.

'76 OLDS OMEGA H/B, less than 40K mi, a/c, am/fm, 20mpg, \$2795. Frank, ML 223-4019; (617) 653-3780.

'75 DATSUN B210, blue, 4spd, 4dr, new front/rear brks, snow tires/rims, \$1800. Jon, HL 225-4159.

'77 TOYOTA COROLLA, 2dr, auto, am radio, 1 owner, mtd radial snows, \$2950. Richard, MR 231-4336.

'79 TOYOTA COROLLA, liftback deluxe, 5spd, am/fm stereo, rads, \$4800 or B/O. Larry, PK 223-5955.

'72 DATSUN 510 WAGON, exc mech cond, body gd, \$1300. Rick, MR 231-4336.

'73 MGB-GT o/d, new batt, exhaust, stereo cass, currently off road, \$2000 or B/O. Jill, ML223-6408

'73 TOYOTA COROLLA, 4spd, gd gas mi, runs gd, \$675. Bill, ML 223-9363.

'73 SAAB 99LE, 60K mi, am/fm radio, a/c, auto, 4dr, exc cond, B/O over \$2500. Donna (617) 467-4830.

'76 AUDI 100LS, 4dr sedan, std, plush int, am/fm radio, radials, exc cond, \$3200. Cathy, CF251-1445.

'75 MERCURY MONARCH, 6cyl, std trans, 47K mi, 4 new tires, \$2350. Susan, MS 223-8910.

'79 HONDA ACCORD, hatchback, silver/black, auto, 30K mi, am/fm, \$5500. Bruce, ML 223-3402.

'74 AMC SPORTABOUT WAGON, a/c, great mpg with reg gas, no known problems, \$2000. George, MR231-5132.

MISCELLANEOUS

FIREPLACE HEAT EXCHANGER, used 2mos, \$60 or B/O. RUGS, 9X12, 10X12, beige, B/O. Steve, ML 223-6449.

CRIB, white Jenny Lind w/yellow gingham cloth covered bumper pads, \$65. Jill, ML 223-6408.

WALL UNIT, walnut formica, 30HX12DX72H, 1 piece w/bar/desk drop lid, \$50. Mike, AC 232-2425.

LENS (35mm camera), Minolta 135mm 2.8, Vivitar 80-205mm, 135mm screw mounts, B/O. Karl, PK 223-6193.

SINGLE BED MATTRESS/SPRING BOX, new, \$80. ETHAN ALLEN MIRROR 24"X42", \$50. Theodore, ML 223-8432.

COFFEE, END TABLE, glass top, wooden frame, \$150/both. TUB CHAIR, beige, \$150. Theodore, ML 223-8432.

CHAIR, mahogany w/cane seat, 50 yrs old, exc cond. Letha, PK 223-4428.

SOPRANO SAX, recently overhauled w/Selmer mouthpiece, \$225. Michael, PK 223-4404.

MAGNUS ELECTRONIC ORGAN (not a toy), auto rhythm, single keybd, no pedals, \$95. Bob, ML 223-4585.

SNOW TIRES, 4ply Poly Delta, sz H78-15 on Ford rims, used 3K mi, \$60/pr. John, ML 223-5205.

WALTON EXERCYCLE, electrically powered, variable spd, exc cond, \$100. Richard (617) 897-8112 after 6.

MEDITERRANEAN DINETTE, oval table+leaf, 4 chairs (blk vinyl seats) \$100. Linda, MR 231-6747.

CAR STEREO 8-track, auto radio, mod TTS-1080H, 2 spkrs, 5½" mod SK-950. John, ML 223-8006.

7' POOL TABLE incl all accessories, gd cond, \$75. Dick (617) 897-8112 after 6 pm.

SKI BOOTS, sz 8, sz 9 (Henke), \$10 ea pair. Steve, PK 223-5221/5222.

SONOR DRUM SET, dbl tons, real rosewood (genuine) finish, all cases, \$1000 or B/O. Paul, TW247-2222.

SOFA & LOVE SEAT, black vinyl, exc cond, \$375 or B/O. Neal, MR 231-6806.

MOTOROLA STEREO, am/fm turntable, floor mod, \$140. OPTIGAN STEREOPHONIC ORGAN, \$200. Dave, MR234-4269.

POLICE SCANNER, Radio Shack (cost new \$150), \$75. Frank, ML 223-4029 or (617) 653-3780 eves.

FURNITURE, couch & 2 chairs, \$250. Barbara, PK 223-4835.

SKIIS, Hart Super 180CM w/o bndg, \$85. LOOK N-57 bndgs, new, \$35. John, MR231-6281; (617) 456-8311.

SKI BOOTS, women's sz 8, new, incl 2nd hand skis & ski poles, \$50. Darlene, (617) 486-9204 aft 6.

KRANICH & BACH GRAND PIANO, new key coverings, tuned, action regulated, \$1500. Dot, BG223-7713.

BOBBY-MAC CAR SEAT, deluxe, incl blue/wht checked cover, exc cond. Kaye, ML 223-9385.

GRAND PIANO, 5'X10" Santa Domingo mahogany, 50 yrs old, \$2900 firm. Danf, ML 223-6475.

CAR STEREO, am/fm cassette in dash, \$60. TRIAX SPEAKERS 6X9, \$45/pr. Jack, AC 232-2402.

SNOW TIRES, Firestone T/C, fiberglass rads w/w, FR78-14, \$60/set; FR78-15, \$100/set. Bob, MD255-2305.

REFRIGERATOR, 10.9 cu ft, used approx 6 mos, \$100. Eleanor (617) 223-6648.

WOMAN'S 10spd BIKE \$60. FLEX-ERCISER \$10. BETTY CROCKER RECIPE CARDS w/file \$5. Kathy, PK223-8044.

DUNCAN PHYFE MAHOGANY DROPLEAF DIN RM TABLE-\$75. 72" BLUE QUILTED COUCH-\$75. Barbara, PK 223-4835.

OLD OAK CHINA CAB (back nds new veneer)-\$150. LOVE SEAT+2 CHAIRS, \$200 firm. Barbara, PK223-4835.

HO TRACK LAYOUT 5'X10' partly landscaped, stonework, mtn, bldgs, bridges, \$200. Bill, MR 231-4785.

SNOW BLOWER 3.5 HP, used only 4 times, \$150. Nelson, ML 223-8871.

WROUGHT IRON PLANT STAND/TBL \$15.2 WICKER CHAIRS \$110. BARREL BACK CHAIR \$15. Barbara, PK 223-4835.

SKI BOOTS, Nordica, blk/wht, sz 5½ women's, never been used, \$150. Joe, ML 223-7697.

PANASONIC MUSIC CENTER, am/fm, phono, cassette, exc cond, \$50. Bill, ML 223-5113.

CAMERA, Polaroid SX70, leather bound with case, exc cond, \$125. Hank, MS 223-7791.

TENNIS RACKET, Spaulding, all wood, \$5. MEN'S SUEDE JACKET, sz 42-44 (orig \$200) \$50. Jeri, ML223-4675.

7' POOL TABLE incl all accessories, gd cond, \$75. Dick (617) 897-8112 after 6 pm.

Type or clearly print your ad and send to Marketplace, PK3-1/K23. Ads are published on a first-come, first-served basis for Digital employees. The full name and all seven digits of the employee's DTN number must be submitted with the ad.

Category _____

Item _____

Description (include price) _____

DTN telephone number _____

Location _____

Full name _____

In the true holiday spirit:

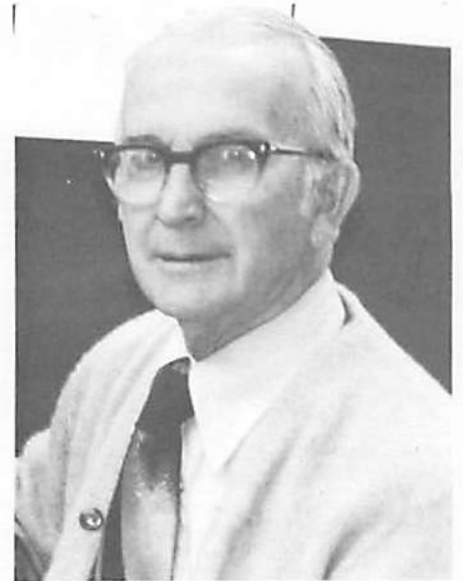


Pat Grieve, left, plays Mrs. Claus and helps members of the Acton Employee Activities Committee and key managers pass out turkeys at the Acton Plant. Anne Trudeau, right, another AEC member, assists Mrs. Claus in assuring every Actonite receives their Christmas turkey.



Wayne Heilignann, work coordinator, poses by his tree of the future, Stockroom 55's contribution to Christmas at Digital. Printed circuits and bits of polystyrene plastic add that certain something to his creation.

Digital's oldest employee retires



Wilmer "Bill" Brackett, Material Control scheduler and Digital's oldest employee, is retiring after 19 years with the company. Bill is 75.

Joining Digital in 1962 as Badge Number 345, Bill worked in Material and Production Control in Maynard. He was later assigned to Westminster and then Marlboro. A pioneer member of the Department of Volume Material, Bill was present through its transition to computers. His work, which used to be accomplished the hard way, was broadened to use the department's new concept of the operations.

Bill's son, Robert, is Field Service branch manager at Digital's Honolulu office. Dan, his eldest son, is a chemical engineer for IBM. His daughter, Joan Drexler, with her husband own and operate Drexler Farm in Stow. Bill and his wife, Margaret, will celebrate their 50th wedding anniversary in September.

An ardent golfer, Bill has been active in golf leagues at each plant. And he devotes a generous amount of his time to gardening and church work.

A party in his honor is being held on Jan. 16. Contact Beth Norton at MR1-3/P78 or DTN 231-5858 for tickets.