

digital

MAYNARD

# DIGITAL THIS WEEK



Volume 14, Number 12

July 13, 1987

## Digital honors Gertrude May Brown, 1,000th retiree

*(It's never too soon to plan for retirement. See related story on page 3.)*

Gertrude May Brown's recent retirement marked a milestone in Digital's history. Gertrude, a former inventory controller in the Springfield plant, is the company's 1,000th retiree. In his congratulatory letter to her, President Ken Olsen wrote, "On this occasion, I would like to honor your important contributions, as well as those of all our retirees, to the success of the company."

Gertrude was honored at a luncheon in Maynard. This was her first visit to the Mill, and she arrived in a limousine with her husband John. Jack Smith, senior vice president, greeted her with flowers and a gift.

In their retirement planning, the Browns realized that both their finances and their lifestyle would change. Their plans call for spending the winter in Florida, although "Florida would be too far away for us to be there for good," Gertrude says. Besides, says John, "I'd have a hard time keeping her away from our twin grandchildren."

Milestones are nothing new to Gertrude. In addition to being Digital's 1,000th retiree, Gertrude was also one of the first 100 employees hired at the Springfield plant. ■

*In the photo at right, Jack Smith, senior vice president, and Gertrude May Brown, Digital's 1,000th retiree, at the luncheon held in her honor at the Mill. Gertrude says that pre-retirement planning was important for her and her husband.*



## No, it's not from the Titanic . . .



*. . . in fact, it's much older than that. What is it? Answer, story, and more photos on page 8.*

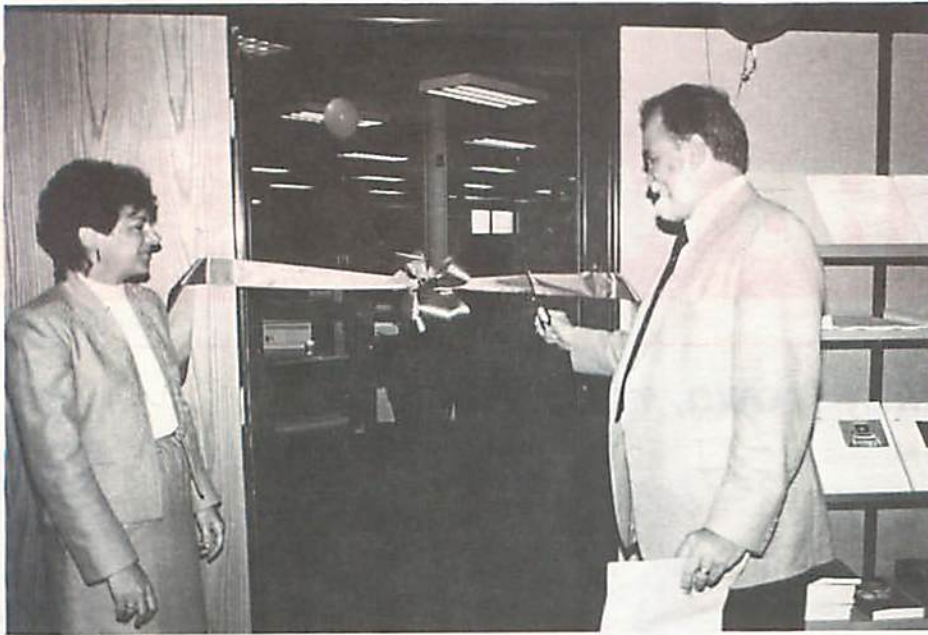
## Digital, Toys R Us sign \$14 million contract

Toys R Us, a national retail chain of children's toy stores, has signed a \$14 million contract with Digital to provide computer solutions for its price-look-up and point-of-sale systems for 300 stores nationwide. This contract will bring a wide range of Digital solutions to Toys R Us stores, including MicroVAX II systems, software, network installation, training, and other services.

Toys R Us, headquartered in Rochelle Park, N.J., is the largest and fastest growing company in the toy specialty retailing chain business. As of Feb. 1, 1987, the company operated 271 toy stores in the United States and 24 international toy stores (served from 20 warehouse/distribution centers), 43 Kids R Us children clothing stores and four department stores. Annual sales were \$2.4 billion. ■



## Resource Center opens at Mill



Jean Kilty, left, Office Information consultant for the Manufacturing/Engineering/Marketing Resource Center, and Dan Infante, vice president, Manufacturing Information and Technology, prepare to cut the ribbon at the MEM Resource Center's opening. The center offers individual and group consulting, one-on-one training, coordination of group training, and Office Automation support services. It is located at MLO1-4, Pole 23A.

## Center for Systems Development Process announces workshop

The Digital Testability Consortium announces its 11th Design for Testability Workshop Sept. 9 and 10 in the Marlboro facility (MRO3).

This workshop will cover state-of-the-art Design for Test techniques, methodologies, and tools for LSI- and VLSI-based products. The primary focus of the workshop will be

on the practical aspects of Design for Testability (DFT) that are relevant to Digital's design and product environments.

Designers of chips, boards, and systems; managers and project leaders; diagnostics and test engineers; and manufacturing and customer service engineers will find this workshop to be of particular interest. Members of the Digital Testability Consortium will lead the workshop.

For further information regarding registration, as well as a complete abstract on the course, please contact Nancy Cross at DTN 223-3620 (MODEL::CROSS). ■

### DIGITAL THIS WEEK



Editor: Kate Nelson

Send stories, photos, ideas or suggestions to DTW, CFO2-3/K23 or call the editor at DTN 251-1307. Electronically, the editor may be reached on DECmail @CFO or at CELICA::KNELSON. Ads must be submitted in writing to Marketplace, CFO2-3/K23. Please direct all Marketplace inquiries to DTN 251-1308.

Digital This Week is published every other week by the Corporate Employee Communication department of Digital Equipment Corp. for employees in the Greater Maynard Area.

## New VAX SQL course available

Educational Services announces the text-based course "VAX SQL Programming," a course primarily for VAX/VMS programmers who want to use VAX SQL to query, store, modify and delete data in a database that conforms to Digital Standard Relational Interface (DSRI).

**VAX SQL Programming (Part no.: EY-6734E-PR; additional student package: EY-6734E-SP)**

VAX SQL, announced earlier this spring, is a data definition and manipulation language for relational databases. It is Digital's implementation of the ANSI standard SQL, which is highly compatible with IBM's DB2 database product.

This text-based course teaches application developers about Rdb/VMS relational databases using an ANSI standard language. In addition to programming and database creation, the course shows how to code a program to access a DSRI-compliant data base using embedded VAX SQL statements in high-level languages.

"VAX SQL Programming" takes approximately two days to complete. Support requirements include VMS 4.4, VAX SQL V1.0, Rdb/VMS V2.1, and a high-level compiler for a language such as FORTRAN, COBOL, or PL/I. Suggested prerequisites are "VAX/VMS Utilities and Commands," "VAX Rdb/VMS Programming," and "VAX Rdb/VMS Design and Administration."

The course costs \$450 for Digital customers, \$225 for U.S. employees. Additional student package: \$250 for customers, \$125 for employees.

U.S. employees (other than Field Service and Software Services personnel) may order the above-mentioned items by sending a memo to Educational Services' Order Processing group in Billerica, Mass. Address VAXmail memos to EDSVAX::MAILPO and DECmail memos to MAILPO @BKO. Include your name, badge number, cost center, full facility address including mailstop, title, quantity, and order number. To phone Order Processing, dial (1-800) 343-8321.

Field Service and Software Services employees may order this course or the equivalent employee courses by contacting their Area Logistics trainer. Employee courses are listed in the Employee Course Schedule and course catalogs. ■

## Digital, Analogic sign marketing agreement

Digital and Analogic Corp. have signed a cooperative marketing program (CMP) agreement to merchandise computer solutions based on Digital's VAX computer systems and Analogic's high-speed array processors.

Under terms of the agreement, Digital and Analogic will provide each other with certain marketing, promotional, training and technical support to generate sales of each others' products in the federal government and defense contractors marketplace.

Analogic's high-speed array processors are installed as peripheral devices to Digital's VAX computers for use in a wide range of image processing, graphics, automation and real-time signal processing applications.

Analogic, headquartered in Peabody, Mass. designs, manufactures, and markets advanced high-speed precision data conversion and computer-based signal processing instruments and equipment. ■



## Dan Latham named director of Telecommunications/Utilities Industry Marketing



Dan Latham

for all the segments within the Telecommunications Industry, managed by John Hart,

Dan Latham has been named director of Telecommunications and Utilities Industry Marketing (TUMS), reporting to Bob Hughes, vice president, Service Industry Marketing. In this position, Dan will have strategic marketing responsibility

and within the Utilities Industry, managed by Brian Premru.

Dan joins Digital from Ameritech Communications, where his most recent position was vice president of Service Operations. His previous assignment at Ameritech was vice president of Marketing and Operations. He also served as division manager at AT&T Information Systems, as a district manager at American Bell, and held a variety of sales and marketing positions at IBM. Dan is a graduate of the University of Northern Iowa, Cedar Falls, Iowa. ■

## Jon Caputo named director of Corporate Program Management



Jon Caputo

Jon Caputo has been named director of Corporate Program Management, reporting to Don Busiek, vice president, Software Services, Computer Special Systems, Educational Services. In this newly created position, Jon will provide

a strong program management focus to enhance Digital's ability to manage large customer projects and programs worldwide.

Jon is a 15-year veteran of Digital, and most recently was U.S. Sales Support manager. Previously, he was the Western Regional Software Services manager and the New York District Sales manager. In FY83, he won the Baton award. Jon is a graduate of Point Park College, Pittsburgh, and has completed the Harvard Executive Management Program. ■

## DIS announces Network Training Program

The Network Training Program (NTP) is an intensive 19-week program which is designed to train employees to become telecommunications analysts or network management specialists. The program includes nine weeks of classroom and laboratory instruction, followed by 10 weeks of on-the-job training. The deadline for applications is Aug. 3, and the course begins Sept. 14.

Prospective candidates should have successfully completed "VAX/VMS Utilities and Commands" and should be recommended by their managers. The NTP Selection Committee will review applications and interview candidates to be selected for the program.

For further information, contact Rachael Kurtyka, DTN 273-3483, or Ginny Mardirosian, NTP manager, DTN 273-3598. ■

## Hispanic Heritage Week set for Sept. 14-18

The Hispanic Leadership Group and Corporate EEO/AA will co-sponsor Hispanic Heritage Week, Sept. 14-18. A daylong corporate celebration featuring a cultural fiesta will be held on Friday, Sept. 18. Consult LIVE WIRE, Digital's electronic bulletin board, and future issues of "Digital This Week" for information about the week's activities. Questions may also be directed to members of the Hispanic Heritage Week Task Force:

Miriam Gonzalez, DTN 251-1368

Hector Torres, DTN 282-1445

Elsa Rodriguez, DTN 276-8889

Camille Chavez, DTN 241-3483

Eladio Cortes, DTN 226-7360

Ray Rodriguez, DTN 261-3649.

## 'ABCs of Computers' to be offered this summer

"The ABCs of Computers for Non-Technical Employees" will be offered at the Bedford facility in July and August. This five-day course is a technical orientation which will familiarize the non-technical employee with computer hardware and software elements, technical terms, industry terminology, and the structure of computer systems. The course will be held on July 20 and 27, and on Aug. 10, 17, and 31.

To register, call the registrar at DTN 249-4660 or (617) 276-4660. Reference course code EY-3686E-LO. ■

## Never too young to plan for retirement finances, lifestyle

(Digital honors its 1,000th retiree. Story and photo on page 1.)

"The decision to retire is very personal, and Digital understands that," says Ed Schwartz, chair of the Retirement Committee. "In fact, ever since the Executive Committee adopted the Pension Plan in 1966, we've respected employees' individual decisions about when to retire and how to plan for retirement."

Employees can wait to decide when to retire, but it's never too early to begin planning for "life after Digital." Just as long-term business planning is important to the company, long-term personal planning is

important to employees.

The Digital Pension Plan, with an investment fund of \$1 billion, is designed to provide a retirement benefit to each Pension Plan member. However, the plan is not intended to replace 100% of pre-retirement income. So, Digital encourages employees to recognize three likely sources of retirement income—pension, Social Security and personal savings.

The pension amount will depend on how long an employee has been a member of the Pension Plan and his or her salary history at Digital. Similarly, Social Security income de-

pends on earnings and number of years in the U.S. work force. Employees can influence these sources only through consistent lifetime earnings.

However, employees can directly affect their personal retirement savings through investments, individual retirement accounts, and Digital's SAVE Plan. Employees can also plan for their new lifestyle by attending pre-retirement seminars, which the company offers to those approaching retirement age.



# THE MARKETPLACE



## APPLIANCES

GAS STOVE, w/ht, broiler, oven, vry gd cond, used 6mo moved to all elec home, \$300/80, Don, 225-4607

DRYER, electric, best Sears, about 1970, auto-sensor, vry vry well, moved-do not need, \$75, Gary, 223-4094

DRYER, gas, Whirlpool, white, used 6 mos & moved, no gas, paid \$350, ask \$195, Brian, 297-5798

MICROWAVE OVEN, Hotpoint, \$125; GE Dryer, 5 cycles, \$170; fl sz GR fridge w/beer tap 100; Mark, 273-3259

GAS STOVE, Magee, avocado green, 2yrs old, ex cnd, \$125, Larry, 297-4154

## CARS

'84 PLY VOYAGER, exc cnd, slvr/red, 2.2l, 5spd, ac, ps, am/fm stereo, 7 pass, \$8000, Greg, 237-3340

'80 MAZDA HTCHBK, clean, dependable, \$600, Bruce, 223-6740

'81 CUTLASS SUPRME, V6, auto, am/fm radio, 2 new tires a/c, v.g. cond, \$3700/80, Wendy, 223-5953

'79 DATSUN 310 GX htchbk, good cond, 120Kmi, service record available, \$1400, Chris, 225-6694, 225-4795

'76 CHEVY CAMARO, 6cyl, auto, runs well, \$300/80, Donna, 225-5277

'79 FORD PINTO WGN, 40Kmi, a/c, ps, exc cond, extra whis&ties, lo cost/main/taxes, \$2K, Bill, 224-1615

'82 TOYOTA CELICA, w/s pkg, slvr/blck, am/fm cass, extra rns, shop manual, v.g. cnd, \$4900, Mike, 292-2051

'82 OLDS CUTLASS CIERA, white, snrf, tilt, rear w/d am/fm ster, exc cnd, hi mile, \$2300/80, Bob, 234-4227

'80 AUDI 4000S, exc cond, stnd, a/c, 68K, blck w/blue int, 4 cyl, \$2500/80, Leslie, 274-6458

'83 MAZDA RX7 GS, 5spd, blue, a/c, am/fm Dolby stereo cass, Chapm lock, 64Kmi, \$6500, Len, 292-2042

'81 BUICK SKYLARK, V6, auto, a/c, fm stereo cass, 88Kmi good cond, \$2500/80, Louise, 273-3511

'85 SUBARU DL, 35Kmi, 5sp, ex cnd, \$6500/80; '82 BUICK LESABRE, 2dr coupe, 75Kmi, 8cyl, \$4500, Sarah, 297-7831

'79 FORD FAIRMONT, 4dr, 6cyl, auto, high miles but good cond, \$750, Brad, 237-3370

'83 DODGE COLT, 32Kmi, am/fm stereo, exc cond, \$2600, Jim, 274-6769

'82 SCIROCCO, 50Kmi, S/Western car, superb cond in & out, am/fm stereo tape, \$3900, Frank, 232-2278

'83 CHEV MALIBU STNWCN, V6, auto, pb/ps, ac, am/fm, rck r defog, no rst/dntn, 45Kmi, \$4200/80, Jacob, 297-4716

'83 FOR THUNDERBIRD, blck w/red int, exc cnd, new exhs/brks, tuned up, pw/pb/ps, \$5800/80, Bob, 223-1892

'85 VW JETTA sedan, exc cond, a/c, Blaupunkt cassett Brian, 297-798

'84 TOYOTA VAN, 7 pass, ps/pb, cruise, tilt, a/c, tape 39Kmi, exc cnd, rec by Con Rept, \$6900, Jon, 269-2061

'83 TOYOTA 4x4 Longbed pickup, alum cap, step & tow bumpr, am/fm, lo mileage, \$5500, Jim, 226-2195

'84 BMW 318i, 36K, sunrf, a/c, am/fm cass, exc cnd, asking \$12900, Sue, 226-7469

'84 DODGE DAYTONA, blck, 5spd, am/fm cass, 6 spkrs, snrf, 71Kmi, gd cnd, price/sell \$3500, Ricky, 261-2175

'82 FORD MUSTANG, T-rf, 4cyl, 56Kmi, auto, am/fm cass, ac, snw trs, v gd cnd, lt blue, \$4K/80, Carol, 223-7551

'77 TOYOTA CELICA, 91Kmi, a/t, 2dr, yellw, brn vnyl rf am/fm cass, nd am wrk, mt sl, \$1500/80, Jean, 277-7206

'79 TRANS AM, exc cnd, 76Kmi, \$4K/80, Karen, 297-7720

'84 FALCON CONVTRBL, blue, rebilt 6cyl eng w/48Kmi, bdy good, new tires/brks, \$2500, Rick, 285-6045

'75 SAAB 99EMS, 4sp, 85Kmi, no paint, gd cd, \$1700/80; '80 SAAB 900Turbo, 5sp, 112Kmi, 5K/80, Benji, 292-2206

'78 TOYOTA COROLLA, 4dr, blue, auto, air, stereo, well main, B/O, Ching, 225-4334

'84 LASER-XE Turbo, 5spd, FWD, ps, stereo, Chapman, cruise, eltrnc dash, \$6500, exc cond, Nancy, 276-8254

'74 264 VOLVO, body in gd cond, nds some mech work, \$1000/80, Kim, 244-6106

'74 SAAB, 4dr, 4spd, no rust, new steering, 120Kmi, \$800/80, Bill, 293-5984

'72 TRIUMPH 650, less thn 1000 miles on rebilt eng, runs well, \$500/80, John, 225-5102

'80 MAZDA GLC, 2dr htchbk, stnd shift, wht w/blck int 85Kmi, gd running cnd, \$1000, John, 297-7083

'81 CHEVETTE, blue, 4dr, htchbk, 4cyl, well maintained asking \$1600, Michele, 247-2052

'81 TOYOTA CORONA WGN, 90Kmi, auto, ex cnd, great for college or mom, \$3500/80, Marise, 297-5004

'84 TOYOTA X/CAB, 5spd, am/fm ster, slndg r wndw, bck seats, rustprf, 53Kmi, ex cond, \$4400/80, Joe, 272-7296

'79 MAZDA GLC WGN, new brakes, 84Kmi, great little car, \$1000, Rich 297-7495

'84 MERCURY CAPRI, auto, a/c, fm ster cass, tilt, dk blu w/lt bl int, ex cd, 49Kmi, \$3900, Monica, 226-7341

'72 PLYMOUTH DUSTER, slnt V6 std, exc cnd, new brks/exhst, paint, 106Kmi, rns wel, \$1500, Cathy, 223-3670

'79 TOYOTA COROLLA, 4dr, sw, 125Kmi, runs well, asking \$500, Gordie, 297-5546

'84 MERCURY COUGAR, slvr LS, auto, wire whls, ac, ster cass, pwr doors, etc, 69K mi, ask \$5500, Nancy, 244-6344

'80 FORD MUSTANG, lt blue, 4spd, vry gd cond, \$1500 firm, Eileen, 296-4712

'86 HONDA CIVIC SEDAN, lk new, 4drs, 5spd, am/fm cass air cond, 19Kmi, \$8400/80, Jacob, 297-4716

'79 MAZDA RX-7, runs great, Pirellia, high mileage, nds some work, \$1600, Greg, 296-4291

'79 MG MIDGET, Rally Sport Edition, exc cnd, 51Kmi, \$3000/80, Bob, 297-4679

'84 RENAULT ALLIANCE DL, slvr, 2dr, 39K mi, ex cnd, am/fm, snrf, new trs, brks, \$3500/80, Denise, 234-4143

'77 VOLARE, 4dr sedan, manual, 4spd, pspb, rw defog, v well mntn, orig owner, \$300, Eleanor, 226-2133

## FURNITURE

COUCH & MATCHING STUFFED CHAIR, French Prov, very good cond, \$250/80, Marion, 223-3993

TEAK COUCH, cmfrtbl, gd for den, \$250; 4 antique chairs, need refinsh, \$100/80, Adnan, 617-393-3008

DINING RM TABLE & CHR5, entapry smkd glas ovl tbl w/4 chrs, exc cond, \$250, Judy, 297-7931

PORT-A-CRIB w/mattress; set of drawers for under super single water bed, Cheryl, 297-2601

SOFA BED, loose cushion, brown/beige velour stripe pattern, exc cond, \$100, Ron, 244-6733

WATERBEDS (2)qn sz, Spanish hdbd, gd cd, all access, \$400; kg sz, brass hd/ftbd, \$1200/80, Sondra, 223-2551

MODERN SOFA SET, 2 mtchng sofas w/pillows, neutral color, will deliver locally, \$300, Dave, 226-7464

## LOST & FOUND

PRESCRIPTION SUNGLASSES, in "Vision House" case, blk plastic frames, v strong prescription, Neil, 223-5284

## MISCELLANEOUS

TRUNK LID, 75 Alfa Spidr, \$20; Dash \$5; Jack, 223-6196

CAR SEAT, Century 200, v gd cond, cloth cover incl, \$30 (new \$65), Dennis, 272-7166

REEL TO REEL TAPE DECK, Sony TC6300 w/blk tapes, exc cond, \$145, Sonia, 234-5446

RAINBOW, 256K, disk, LA50, WPS Kbd, DEC Cptr desk, WPS, Lotus, more, \$3600 invst, \$2100, Dan, 244-6508

TRACTOR, 11 HP, 38" mower, New Englndr, usd 2 1/2 seas tuneup last yr, exc cond, \$700, Mary, 296-5535

ATS TRAVEL CASES (6)hrdshll, var szs, gd for hardwr snd, photo, AV equip, B/O Indv or lot, Agnes, 251-1325

AKAI AA-A45 RECEIVER, 60 watts/channel, 1 yr old, multipl in/outputs, upgrad sys, \$125, Ron, 223-8399

RAINBOW, PC100+, 256Kbytes mem, 10mg hrd dsk w/CP/M MS/DOS, Benchark, PFSfile, Lotus, \$2200, Mitzi, 244-6173

COMBINATION WDWMS (6), alum, white, triple track, 40"x 50 1/2", \$15ea or B/O, Bill, 297-7864

YAMAHA PF10 ELEC PIANO, great piano sounds, great midh contrller, \$799/80, mt sel fast, Steve, 223-4969

SHEEPSKIN SEATCVRS, '83-84 Honda Accord blue, full, orig/\$300, ask/\$150, frnt mask \$25, Sheryl, 272-7411

VIDEO CAMERA, '86 Hitachi, attch/VCR, rare used \$350 LAWN TRACTR, 8hp, 32" blade, Sears, exc, Deane, 223-8982

AIR CONDITIONER, old but reliable, 5000 BTU Carrier \$50/80, Lou, 223-4457

SEMI-AUTOMATIC TURNTABLE, Sanyo, used once, \$75, Barbara, 276-8522

WOOD/COAL STOVE, Shenandoah, cmplt w/wood and coal grates, 5 yrs old, \$125, Walt, 225-4593

CONSOLE COLOR TV, Sylvania, tube model, 6 yr old picture tube, nds some work, \$20, Matt, 237-3707

PIANO, '79 Currier console w/matchng bnch, walnut, bltin humidifr, exc cnd, \$1100/80, Louise, 223-8578

'84 RIDING TRACTOR, Gravely, all attch, usd 1 wntn, orig/\$8500; sell for \$5200 firm, Jane, 297-5334

VIDEO CAMERA, Sharp, for port VCR, model Qc50, ' purchased 1983, \$200, Steve, 225-4686

WETSUITS, one set ea/longjns, shortjns, sleeves, thin & flxibl, easy maneuverng, price cheap, Paul, 237-2783

HEART SHAPED CHARM, 14KG, lg, w/man/woman's hands in ctr, woman's hnd has diam ring, \$350, Penny, 272-7096

AIR CONDITIONER, Westinghs, exc cnd, 4 yrs old, model Is 7.3, capacity 5900 BTU/hr, ask \$250, Rose, 244-7609

NORTHLANDER, 8' pickup truck Cap, \$75/80, Liz, 223-7785

TIRES, 3 Polyester tires, mounted, ex cond, sz E78-14 were on '78 Olds Omega, \$50 for all, Brenda, 234-5267

CLASSICAL CASSETTES, very good cond, all labels incl Musical Heritage, Phil, 226-7237

KIRSCH EMPIRE TRAVERSE ROD, white, 48 to 86", \$7; IVORY 1" Vinylat miniblind (3) \$5 ea, J.R., 297-4088

19" COLOR TV w/stnd \$100; Wooden Platform w/slide/ind use/125; Little Tyke House/100, Lesley, 249-4005

PORTABLE KEYBOARD, Casiotone 310, 49 ful sz keys, 12 instru snds, chrd, and eff, rhythms, Sharon, 293-5805

TIRES, 2 Yokohama 185/70 SR14 on Datsun rims, slightly worn, \$40 each, Mike, 296-6623

19" COLOR TV, GE, top of line model, exc cond, \$125/80, Frank, 232-2548

AEROBIC SNEAKERS, Avia 460s, womens sz 10, oystsr wht worn 1/2hr, \$35/80, Chris, 297-2542, no calls 11-1PM

ROLAND DRUMATIX ANALOG, programmable drum machine w/case & instructions, \$150, Lou, 296-4386

WOODSTOVE, Atlanta Stove #32, B/O; RECLINER CHAIR vinyl B/O, Liz, 223-7001

CAR COVER, custom fit for late model Camaro, used 5 months, exc cond, \$75, John, 226-6032

PC's LIMITED IBM-AT CLONE, gd rep, IMEC memory, 20mb hrd dsk, 1.44mb fl, IBMprnt, 2200/all, Karen, 249-1398

MAGS & TIRES, 5 lug keystone turbos w/215x60x15 Eagle GTs, lo miles, clean, Allan-223-5634

SPEAKERS, 12" Electro-Voice SP12, custm made enclosr ex cond, \$60/ea or both \$100, Sonia, 234-5446

SNOWBLOWER, 26" self propelled, lownr, \$200; Combinatn Storm Door, used, 36x84, \$50, Mary, 297-7407

## MOTORCYCLES

'83 HONDA Ascencade, 5Kmi, touring bike, run exc, well main, 6K or B/O, Edie, 232-2633

## PETS

FEMALE SHIHT-ZU wanted to mate with our 1 1/2 yr AKC regisrtd white/gold male, Rosemary, 296-3659

COCKATIELS, grey w/orange & yellow markings, 1male, 1 female w/cage, all access, \$125, Pearl, 223-3848

OLDER KITTEN, beige/wht paws, & 2yr old cat availbl w/ dlvr w/litr, box, & take bck if nec, Jan, 234-4855

## REAL ESTATE

BURLINGTON, MA, 2br coop apt, fee incl ht, h/w, taxes, 2 pools, tennis, clubhse, \$67.5K, Nina, 381-2316

MARTHA'S VINEYARD, vac tashr, beaut Harborside Inn Rest, interval 22, 1st wk/Jun, \$6500, Linda, 223-5386



STONEHAM, exc loc, lux 4 lev twnhs, outstdng finshd bsmt, loft, pool, low \$200's, Dave, 274-6892

NEWTON, spacious, 2bdr cndo in covrtd schlse, mod kit, w/d, a/c, deeded prkg, \$169K, Larry, 221-5082

MARLBORO, beau 4 br col, 2.5b, a/c, ncr prch, alarm, sprinkler, low \$300's, Sherry, 297-4690

MARLBORO, charm 3br twnhs, 1.5b, bsmt, a/c, appl kit, pool, \$139K, Raymond, 276-8185

ACTON, 6rm ranch, frpl lvrw, hwd flr, scrnd prch, l car gar, wood 1/2 acre, \$180K, Tom, 244-6044

HOLLIS, NH, Am Classic, cntry setting, choose decor, 4br, 2 1/2b, lge faarm, 2car gar, Alice, 223-1697

HUDSON, MA, 3br fpl lr, dr, hwd flr, gar, nice nhrhd vg cond, in \$160's, nd quick sale, George, 223-3436

LEOMINSTER, MA, 5rm ranch, 26x40, 3bdr, lge lvrw, eatn kit, 1/4 ac, easy acce/RT20/1190, 120K, Jeff, 237-2298

HYANNIS, MA, exec retreat or yr round well appointed cstrn floating h/w boat tieup, Ali, 237-2551

PRINCETON, MA, 3br, 2b, fp, lg deck, inlaw apt, Acorn home, 1.9 ac, close/RT2, \$179.9K, Tony, 297-2025

SHREWSBURY, 2br, 1 1/2b, lux cndo, Quinsigamond Shrs, end unit, finshd bsmt, low \$300's, Gerd, 268-3382

WHITINSVILLE, 2br cndo, 10min/495, 15min/Worcestr, lg mstr br, spec features, 6 mo new, \$103K, Hank, 223-3448

WEST BOYLSTON, MA, 4yr cntap, 7rm, 2b, walk/schl, min/140/290, 1.3 ac, fp, skylit, mid 200's, Andy, 296-5424

PEPPERELL, MA, 7rm, 2bth, colonial, frpl, 2 1/2 wooded acres, 1 year old, \$185K, Paul, 274-6753

BOYLSTON, lux, priv, 6rm twnhs, wooded, 2decks, fp, a/c, 1 1/2 bth, gar, impeccable, \$127.9K, Patti, 296-4181

MAYNARD, 4br col, frpl, hwd flr, 2bth, 2 car gar, lge yrd w/trees, deck, \$189.9K, Holly, 274-6934

## RECREATION VEHICLES

'74 31 ft AIRSTREAM TRAILER, rear twin bdr, ctr bth ex cond, load levers, sway bar, \$10K, Faith, 223-7725

'31 C&C SLOOP SAILBOAT, '69 fbgrls; atomic 4gas inbd auto pilot, 4 sails, exc cond, \$21.9K, Bill, 296-4154

'86 CHRIS CRAFT BOWRIDER, 19.8', 230 hp, in/outbrd, Merc cruiser mtr, 30hrs, ex cond, \$19K/80, Jim, 276-9223

SAILBOAT, 14' Sunfish in gd cond, \$450/80, Rich, 223-4859

SAILBOAT, 17'0" Day Sailor, exc end, w/main sail, jib, tiller extensn/tacking, asking \$3K, Paul, 237-2783

'79 APACHE SOLID CAMPER, slp 7, stove, sink, dinette, like new, \$2000, Kathy, 292-2564

LASER II SAILBOAT, fast, exciting w/main, jib, spnkr and trapeze, v gd cond, \$1800/80, Rick, 264-0135

CATAMARAN, 18' Matrix 5.5 w/Shoreline trailer, exc cond, \$3500/80, Rich, 225-4037

'76 ODAY 22 SLOOP RIG, shoal drft, slp 4, 6hp Johnn othrdr, CB am/fm, sink, stv, \$5500/80, Carrie, 297-7304

## RENTALS

W. GROTON, cntry living, 3br ranch, w/gar, 1yr lease, references, \$800/mo+util, Gerda, 296-4264

WHITE MTNS, spacious 4br/2b chalet, ful equip, frpl tennis, prv lake, pool, hiking, \$400/wk, Carl, 223-8907

W. YARMOUTH, new 3br cape, 1 1/2b, prv yrd, wash/dryr, 5 min walk/bch, \$600/wk, avl 7/4-8-1, Bill, 296-4404

YORK BEACH, ME, bch frnt eff cndo on Long Sands, slp 4, beau vac spot, off season, \$275/wk, Mike, 272-7327

LAKE OSSIPPEE, near N. Conway, Wht Mtn actv, summr hme priv bch, golf, ten, slp 7, \$310/wk, Cornel, 272-7450

W. YARMOUTH, 3br, cable TV, wash/dryr, Englewood Bch/Seagull Bch area, \$500/wk in season, Mike, 249-1344

LITTLE SEBAGO, wtrfrnt, 2bdr, acrn prch, well equip great for kids, canoe incl, \$375/wk, Peggy, 223-8124

CAPE COD, Hyannis, 3br, walk downtown or bch, \$575/wk + damage deposit, Maria, 223-9285

WELLS, ME, ocn vw cottage, slp 3, kit, col TV, ing pool dck, \$325/wk, 250/5 dys, offseas rates, Stan, 246-2207

HAMPTON BEACH, cndo on ocn, 2bdr, wash/dryr, dck, 2car prkg, \$600/wk, \$2200/mo, Lori, 276-8632

W. YARMOUTH, 2bdr cott, 1/2 ml priv bch, Seagull Bch tenn, \$450/wk Jul&Aug, \$375 Jun&Sep, Steve, 225-4686

STOW, 3br lakefrnt hme, priv dock, lge deck ovrlk wtr dahsh, w/d hkup, avl Aug 1, \$975/mo, Connie, 276-8366

TEWKSBURY, rental w/optn, twnhse, w/d, e/u, 1.5b, \$950 mo+util, Steve, 274-6512

MARLBORO, 2nd flr/2fam, 3br, 2bth, cntry kit, lv/dn rm w/d hkup, lrg yd, \$800/mo+util, Dave, 293-5387

WESTBORO, 2bdr cndo, min/495& Pike, pool, tennis, play ground, asking \$86.9K, Linda, 237-2033

NO CONWAY, 3br, 2b home, prime loc, avail week and w/e, Denis, 244-6919

LOWELL, 6rm, 3br apt w/stv & refg, prkg, exc nbhd, yd, no pets, avl 8/1, \$375 inc all utl, George, 269-2419

SESUIT HARBOR, DENNIS, 3br, 2b, wld, 5 min/wlk/harbor bch, no pets, avl Jun, July, Aug, \$675/wk, Cell, 296-3222

EASTMAN/SUNAPEE, cottage on lake, slp 6, priv bch, boat incl, great fishing & golf, Thain, 244-6480

WHITE MTNS, 2bdr twnhs, slp 6-8, on river, ful equip tennis, pool, clubhs, \$400/wk, George, 276-9623

WHITE MTNS, JACKSON, NH, 3br lux cndo on 18hole golf cts, tennis, pool, near No. Conway, George, 292-2563

WORCESTER, Burncoat area, Victorian duplx, 4br, lg lr dr, kit, yd, easy acce/RT 290, \$825/mo, Cathy, 297-7515

WHT MTNS, wtrfrnt vac hme, slp 8, ful furn, priv bch, ten, pool, canoe, hike, fish, \$400/wk, Marcia, 297-6337

W. HAWK, 2br, slp 6, 5mi/bch, ful kit, bth, dead end Jul/Aug \$500/wk, Jim, 296-6698

W. YARMOUTH, CAPE COD, 3br ranch, imi/Seagull Bch, slp 6 nr shop/Hyannis, avl May-Sep, \$650/wk, Pat, 297-5310

CAPE COD, CHATHAM, 4bdr, 2bth, min/bch, tv, \$650/wk, avl 7/4-7/25; 8/22-9/5, Peter, 251-1173

CAPE COD, HYANNIS, 2bdr hse, quiet street, near Craigville Bch/Cape Cod Mall, Nathan, 223-8560

BASS RIVER, CAPE, attrac/conftrbl 3br cottag, lovely area, avl Aug 29-Sep 12, Gail, 223-4896

SOUTHERN VERMONT, 3br house, quiet area, swim, hike golf, VCR, \$250/wk; \$175/wknd, Dave, 225-4826

OLD ORCHARD BCH, ME, beaut 2bdr, 2b ocnfrnt cndo, slp 6, 2wk/\$2000; mnth/\$3500, nonsmkr, Mary Lou, 296-4084

SHREWSBURY, 3bdr hse, deck, frpl, priv yd, dnm, lge kit, \$895/mo, Simone, 245-5305

LEOMINSTER, 2nd flr cndo, lbr, w/w, a/c, d/w, disp, pool no pets, \$550/mo+util, Ginger, 296-3637

NORTHBORO, 3br ranch, safe/radntl nhrhd, bsmt, eatn kt dck, cnv/RT135, 290, 9, 495, \$950+util, Annette, 297-2564

DENNISPORT, brnd new 3br cape, 400 ft/ocn bch, no pets, \$700/wk, \$400/off season, Pete, 281-3073

CHATHAM, 3br cottg, w/priv ocn bch, deck, frpl, \$510/wk on season, \$310/off, Ray, 274-6996

NEWPORT, RI, Inn on Long Wharf summr reart, right on harbor, 8/2-8/8, lunit for 4, \$1300/wk, Joan, 223-2406

ACTON, 3bdr, 2bth, 2cr gar, acrn prch, fncd yd, min/RT2 & center, \$1250 inc w/d per mnth+util, Henry, 225-7255

CLINTON, Ridgefield Cndos, 2br, ful appl, kit, w/d, patio, gar, frpl, \$900/wk+util, Philip, 268-3475

SEBAGO LAKE, ME, 2br cottage, on water w/sandy bch, use of boat, slp 6, \$275/wk, Mike, 237-2055

CAPE COD, Eastham, new house, slp 6, Nauset Beach, \$600/wk, Kathy, 284-3218

CAPE COD, Wellfleet, 2br, fp, furn, imi/bch, \$375/wk, Jun & Sep, \$475/wk July & Aug, Bill, 234-4976

MARLBORO, cute 2rm studio, furn, priv prkg, yard, nice area, \$375+, avl July, Ray, 223-4187

HYANNISPORT, 3bdr, kit, dnm, lvrw, fmrw, bth, deck, fcd yd, imi/Craigvl Bch, Jun-Sep, \$500/wk, Carl, 234-4063

NORTHBORO, 2rms, priv hme, prv ent, pool, mature, quiet sngl, \$390+util, rferences, sml pet ok, Delores, 223-9295

LEOMINSTER, 2nd fl, 2prchs, lrm lndry hkup, offst pkg quiet, nonsmkr adults, nopets, 500+util, Kathy, 264-6552

LK WINNIPESAUKEE, NH, 2br, 2bth, lux cndo, bch, tennis, pool, golf, slides, more, slp 6, \$450/wk, Magdi, 297-5780

HUDSON, 4 rm apt, 2br, nice location, \$450/mo + utilities, Jim, 264-6176

POCANOS, PA, 3br ful furn lux hse on wooded resort, tennis, fish, hrabck ride, swim, Herb, 234-4376

HUDSON, MA, furn rm + full bath in small priv home, avl immed, wk or mnth, \$85/wk, George, 223-3436

MARTHA'S VINEYARD, hse on East Chop, wtrv, avl Jul of July 18 or Aug 17, pictures avl, Donna, 297-2046

MOTORHOME for rent, '85 Fleetwd 23', slp 4 adults, 2 chldrn, all appl, \$525/wk inc 150mi/day, Ed, 296-3206

FALMOUTH, Cape, 4bdr, slp 7, 5 min walk/inlet bch, near Waquoit, July/Aug \$475/wk, Jack, 223-7196

NOVA SCOTIA, lge wtrfrnt hse, bird & whale watching hiking, fish, easy access, wkly rent, Maria, 237-2904

LEOMINSTER, spac 2br apt, equip w/kit appl, w/d hkup w/w carpet, parking, nr RT2, Carol, 293-5286

NO TEWKSBURY, 3rm apt/priv home, util incl, \$600/mo Jane, 249-1342

NO CONWAY, 3br chalet, slp 8, w/d stv, ful furn, canoe hike, ten, priv bch/Saco Rv, wk/wknd, Diane, 264-7096

MARLBORO, 3br apt, 2nd flr/lovely oldr col, mod kit/bth, w/d hkup, priv yd, \$715/mo+util, Steve, 289-1828

W. HAWK, 2bdr, slp 6, 5mi/bch, full kit, bth, dead end Jul-Aug \$500/wk, Sep \$300/wk, Jim, 296-6698

COTUIT, MA, new cont cape, quiet woodsy area, walk 1/2mi/bch, mast br, loft, slp 8, 600/wk, Sandi, 251-1021

WORCESTER, 2br apt, 2nd flr, close to I290, good area appliances, \$500/mo, Cyrus, 296-5025

GARDNER, almst new ranch, 3br, deck, ful bsmt, beautifl nhrhd, min/RT2, d/w, \$825/mo+util, Tom, 274-6648

LAKE WINNIPESAUKEE, 2br, swim, tennis, golf, avl wkly mnthly rentals, Jun-Sep, Lorraine, 234-5131

CONCORD GREENE, spac lbr, frpl, deck, view of pond, covrd prkg, pool, ten, \$1K/mo htd, Linda, 617-250-1365

STOWE, VT, 3br twnhs, pools, tennis, golf, \$500/wk, avl wkly July 31, Aug 28, Sep 25, Nancy, 276-9880

WHITE MTNS, nr Kinsan Mtn, mod 3br/2b w/all amen, beaut vu, slp 6, \$350/wk, also wknds avl, Tom, 244-6608

SALEM, NH, condo, off RT28, 3min/-1-93, near most DEC/s, \$600/month inc heat/hw/fee, Solomon, 261-3697

BRAND NEW CHALET, few steps/sndy bch, playground, nr White Mtn, slp 8, avl Aug&Sep, \$600/wk, Dave, 223-7390

WELLS, ME, ocean vw cottage, clr tv, ingr pool, deck, \$325/wk, 250/5days, offseas rates, Stan, 246-2207

STOW, VT, cndo, lwb betw 10-12/19, slp 6, 2br, 2bth, ful kit, dr, lr, frp, ind pool, \$450, Lawrence, 223-2413

WHITE MTNS, nr shops, golf, rest, hike, fish, stdo cndo slp 4, pool, tennis, sauna, whlp, \$75/nt, Lori, 296-4161

## ROOMMATES

M/F, Bolton, shr 1820 Colonial hse, lge yard, pets ok pref nonsmkr, \$375+util, Fred, 292-2508

M/F, nonsmkr, shr lge, new 2br twnhse/Pepperell, \$387.5+, nr 495/3, Rajan, 226-7592

M, nonsmkr, spac 3bdr, Stow, garage, w/d, big yard, \$375+ split utilities, Jim, 276-8042

ROOMMATE(S) to locate6 shr hse closer to PKO than Gardner, have dog & cat, I smoke, Bonnie, 223-5834

HOUSEMATE, nonsmkr, cottg on lake, near 290/495, Marlboro, mst like seclusion, \$450+, Elise, 234-4275

HUDSON, nonsmkr, shr 3bdr lakeview ranch, walk/bch, min/mjr rts & HLO, \$300/mo, inc util, Ray, 223-1207

M/F, nonsmkr, shr lge 7 rm home/Hudson close/495 & 290, many DEC facil, \$350+1/2 util, Bill, 223-4284

F, nonsmkr, room, new house, laundry, kitch, \$60, Hudson, avl 8/1, Anne, 276-8206

F, prof, shr priv, quiet home/Marlboro, nonsmkr, \$300/mo, avl nov, Karen, 293-5191

F, nonsmkr, shr lg 2bdr, 2bth apt, Westboro, \$387 incl all util, pool, air incl, Lisa, 617-870-5897

F, prof, 40 yr old, shr 2br apt/Worwood, MA, pool, tennis, patio, \$350 inc ht, Sharon, 268-3096

F, shr 2bdr apt/Marlboro, \$350 inc ht and hw, avl 7/1, Debbie, 234-4364

M/F, nonsmkr, shr duplex in Concord, \$325+, John, 226-7040

F, nonsmkr, shr new 2br twnhs w/pool, tennis, Merrimc NH, close/RT3 & 93, \$350/mo+util, Donna, 247-2335

M/F, nonsmkr, 3br col/Waltham, nr RT90/128/20, gourmt kt, quiet, MBTA, Brandeis, \$395+1/2 utl, Mike, 297-4166

## SPORTING GOODS

SUNFISH & TRAILER, gd cnd, Racing Wndow in sail, \$1K Unicycl 40; Row mchn 50; Exer Bike 30; Jili, 293-5338

BOYS BICYCLE, Univega super star, 18" frame, 24" wheel extras, exc cond, \$75, Pat, 249-4200

## WANTED

SNOW THROWER, gas powered, 20-21", good condition, Kate, 251-1307

COMMADORE 64 DISK DRIVE, Ken, 297-7506/2665

BICYCLES, B or C, for refugee chldrn, age 7-10, will pay up to \$15, mst be safe wrking end, Jili, 223-9005



# educational opportunities

## High Performance Systems course calendar

Course	Date	Location
Geometric Dimensioning and Tolerancing	July 21-23	WFR Classroom A
Introduction to Digital for Engineers	July 28-29	MRO2 Colo. Spgs.
Trans. Line Concepts for High Performance Digital Systems	July 29-31	MRO1/HW/SW
Introduction to Computers	Aug. 3-7	MRO1 HW/SW
Advanced Workshop in C Programming	Aug. 5-7	MRO1 HW/SW
System 1032 Programming	Aug. 17-19	MRO2 Colo. Spgs.
How to Sell Your Technical Proposals	Sept. 9	MRO1 Keyboard
Current Issues in Computer Architecture	Sept. 14-16	MRO1 HW/SW
DECSIM	Sept. 14-18	MRO2 Colo. Spgs.
Quality Factor Development	Sept. 15	MRO1 Keyboard

To enroll through COURSES, set host HYPER, username COURSES, password COURSES. For more information, contact registrar Jean Catto at DTN 297-6298 (HYPER::REGISTRAR).

## Mechanical engineering courses for Q1, FY88

**Investment in Excellence/Becoming an Everyday Genius (6 days\*)**  
Aug. 24-28, Sept. 21-25

**Application Day (Choose one)**

Oct. 7, Dec. 30, March 23, May 4  
\*This six-day workshop combines the fundamentals of two Pacific Institute video-based programs. Students will receive certification upon completion of six full days of training, which includes a separate one-day application session.

**Kepner Tregoe Problem Solving and Decision-making (14 days)**  
July 28-31, Sept. 15-18

**Kepner Tregoe Project Management (3**

**days)**  
July 22-24, Sept. 9-11

**P.E.R.F.O.R.M. (Planning Employee Results for Ongoing Results Management) (4-day workshop in two parts)**

Part I: Sept. 28-29 or Oct. 5-6  
Part II: Nov. 16-17 or Nov. 23-24

**VUE (3 days)**  
July 27-29, Sept. 14-16

For a complete listing of process training courses, contact Paul Sandore at DTN 247-2208 (PARITY::SANDORE). For an additional information, contact the M.E. training registrar at DTN 247-2202 (PARITY::REGISTRAR).

## Digital Management Education courses for July-August

Course	Location	Date
Managing for Breakthrough	WFR	July 15-16, 28-29 Aug. 4-5, 12-13, 18-19
Effective Management Presentations	MKO	July 20-21
Problem Solving	MKO	July 20-21
Finance	MKO	July 23-24
Managing Performance	BUO	July 27-29
	DCO	July 27-29
Time Systems	BUO	July 29
Interviewing Skills	DCO	July 30-31
Time Management	MRO	July 31

## DIS course announcements

### System 1022/System 1032 Conversion July 23

This course will guide the experienced 1022 user through a successful conversion to System 1032. Students will learn to directly convert their 1022 datasets and applications, as well as to enhance existing System 1022 applications with additional features available in System 1032. The course is intended for students who are advanced 1022 users and have completed the System 1032 Fundamentals workshop or who are familiar with the features of System 1032.

### Introduction to FCS (formerly EPS User) Aug. 5-6

This course is a practical introduction to Financial Computer Systems (FCS). Participants will learn to write financial models and produce reports for basic business applications. Prerequisites: "Introduction to VAX/VMS" and experience using VAX/VMS.

Audience: Managers, planners, and other professionals who will use FCS for financial modeling, analysis and reporting applications.

Other FCS courses available:

**FCS Advanced Techniques — Application Development I Oct. 5** (formerly EPS Advanced)

**FCS Consolidation — Hierarchy Oct. 6** (formerly EPS Hierarchical)

To register for the above courses, call Cheryl O'Hern at DTN 249-4670. For detailed course description or other training information, call DTN 249-1461. Descriptions will be sent over the network for immediate reference. ■

## Clark University to hold open house

An open house for Clark University's MBA program will be held in Boxboro on Tuesday, July 28, from 5 to 7 p.m. at the Sheraton Inn and Conference Center (Exit 28 off Route 495) and in Worcester on Thursday, July 30, from 5 to 7 p.m. in Woodland Hall on the Clark campus. Faculty and admissions representatives will be present to talk with anyone interested in learning about the MBA program.

Fall semester classes begin on Tuesday, Sept. 8. Applicants interested in beginning the program this fall should apply as soon as possible. For applications and information, call Clark at (617) 793-7406, or write Clark University, Graduate School of Management, 950 Main St., Worcester, Mass. 01610. ■



## news briefs

### On the move

Educational Services Manufacturing and Distribution has moved its videocassette duplication facilities from Bedford (BUO) to 12-A Esquire Road, Billerica, Mass. 01862 (BKO). For more information, contact Janet Henderson, DTN 248-4197, or Diane Feulo, DTN 248-4195. The outside number is (617) 663-4197 or 663-4195.

### Call for papers issued for Manufacturing Software Symposium

A call for papers has been issued for the December 1987 Manufacturing Software Symposium, which will be held at the Sheraton Inn and Conference Center, Foxboro, Mass. This year's theme is "The Threshold of Manufacturing Integration."

The symposium will feature technical and user discussions, and software demonstrations. Subjects will include software in use today as well as packages for tomorrow.

For a list of specific topics, or to submit an abstract, contact Jeannie Flynn (HAZEL::FLYNN). Abstracts should be 250-300 words long, and the deadline for submissions is Aug. 3.

### DECBIGBAND summer concerts

The DECBIGBAND will perform two free public concerts this summer. On Saturday, July 25, the band will play at Greeley Park, Nashua, N.H. from 7 to 9 p.m. In case of rain, the concert will be moved to the Chestnut Street Gym in Nashua. On Saturday, Aug. 1, the band will perform in the football stadium at Acton-Boxboro High School, Acton, from 6:30-8:30 p.m. In case of rain, the concert will be moved indoors.

### Deadlines for 'Digital This Week'

Deadlines for "Digital This Week" have been established to help employees plan events and publicity around certain editions of the paper. Deadlines do not pertain to Marketplace, which is first come, first served. The next three issues and deadlines for DTW:

Aug. 3 issue — July 22 deadline  
Aug. 17 issue — Aug. 5 deadline  
Aug. 31 issue — Aug. 19 deadline

### Lacrosse League seeks players

New players are invited to join the Lacrosse League, which plays every Thursday in Hudson. No equipment is necessary, and players of all skill levels are welcome. For more information, contact Shereen Goodman, DTN 296-6613 (ANT::GOODMAN).

### 'Digital Pledge Night' for WGBH-TV

"Digital Pledge Night" for WGBH-TV, Channel 2, will be held on Friday, Aug. 21, beginning at 5:30 p.m. at Channel 2's studios in Boston. Volunteers are needed to answer telephones and take pledges as part of the station's annual fund drive. For more information, contact Howard Pierpont, acting coordinator, on VAXMAIL at HUDSON::PIERPONT or on DECmail @HLO.

### Correction

The June 29 issue of "Digital This Week" printed an incorrect number to call for information about Aviation Services' flights to Greenville, S.C. For more information about these flights, call DTN 354-7711.

### Shrewsbury to hold flea market

The Shrewsbury Employee Activities Committee (SEAC) will sponsor its third annual flea market on Saturday, Aug. 1, from 9 a.m. to 3 p.m. in the SHR parking lot (333 South St.). Rain date is Sunday, Aug. 2.

The flea market is open to all Digital employees, their families and friends. Exhibit space (two parking spaces) is \$5, and employees can reserve an unlimited number of spaces. Vehicles will be permitted in the space reserved. Participants must provide their own tables. Food and beverages cannot be sold.

To reserve a space, send a check (payable to SEAC) for the full amount to Pat Far, SHR1-3/West Lobby or to Steve Erlichman, SHR1-4/B10. Please include your name, badge, phone, cost center and mailstop. Reservations must be received by July 25. Employees will receive a confirmation upon registration.

For more information, contact Pat at DTN 237-3734 (NUGGET::FAR) or Steve at DTN 237-3144 (LEDS::ERLICHMAN).

### Running Club wins New England Corporate Track Meet

The Digital Running Club placed first in the New England Corporate Track Meet held recently at Boston University. The team finished with 401 points, ahead of teams from General Electric Co. and CIGNA. This is the second year in a row that Digital has taken the regional title.

The club will compete in the Manufacturers Hanover Corporate Challenge on July 23 and in the company-sponsored U.S. Corporate Track Championships, July 25-26. For more information about these races or the Digital Running Club, contact Betsy Bacon, CSSE::BACON.



# No fuel like an old fuel

## Water-powered turbine provides some electricity for Mill

The Assabet River, which flows past the Mill, once powered the looms of the American Woolen Co. and provided electricity for the town of Maynard. Today, the Assabet is still a "powerful" river. Its water runs a turbine which provides about one and one-half percent of the Mill's electric power needs.

The turbine has been in full operation since January 1987, but the preliminary work needed to get it operating began in 1981. Says Dan Fritzsche, project manager, "We received permits from many agencies, including the Federal Energy Regulatory Commission, state and federal fish and wildlife agencies, and the Maynard Conservation Commission. Design work began in 1984, and by June of 1986 we were performing on-line testing and de-bugging."

Since then, the hydroelectric power plant has operated for approximately 3,900 hours and produced 370,000 kilowatt hours of electricity—enough electricity to meet the needs of 60 average homes for an entire year. The Mill uses about 42 million kilowatts of electricity annually.

Dan says that the project operates on the basic principles of physics. "The water level drops approximately 25 feet between the Mill Pond and the turbine tailrace, where the water is discharged," he explains. "As the water falls, it creates kinetic energy. The falling water pushes on the turbine blades, causing the shaft to rotate and turn the generator. The generator converts the kinetic energy back into potential energy, or electricity, which can be used as needed in the plant."

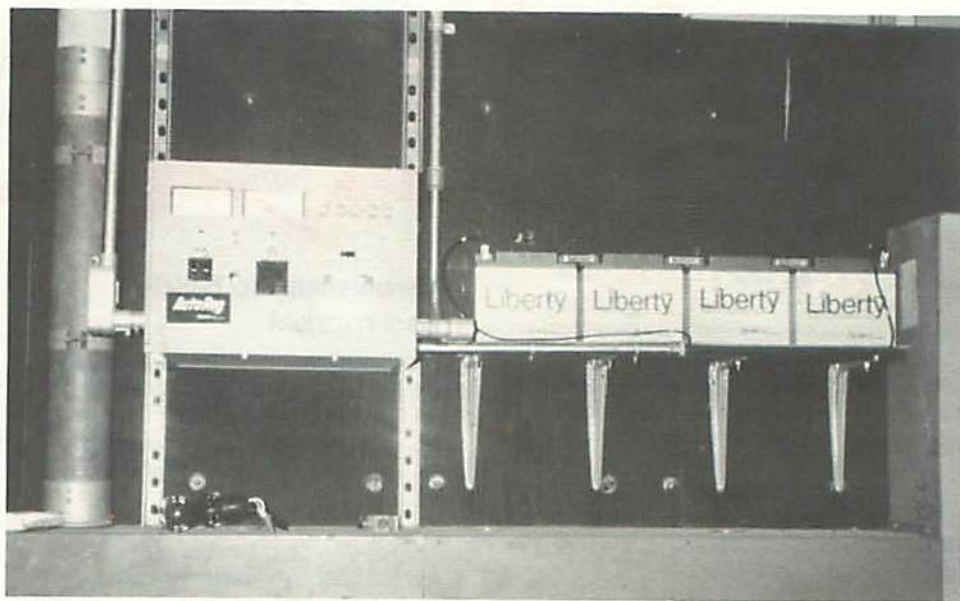
The wicket gates, or valves, of the turbine are connected to the governor, which opens and closes them to regulate the amount of water that goes through the turbine. The governor is "instructed" by automatic controls, which continuously monitor the flow in the river and ensure that the operation of the turbine keeps water levels high enough to maintain fish and wildlife.

"At least 39 cubic feet of water per second must flow over the Ben Smith Dam (on the Assabet River near Stow), or we are required to shut down," Dan says. "During the dry season, from the latter part of June into the middle of October, water flow is low, and very little, if any, electrical generation is permitted."

The electricity produced by the turbine feeds into the electrical service provided by Boston Edison, says project Maintenance Manager Al Legere. "Essentially, all we're doing is slowing down the electrical meter.

*The hydroelectric power generating plant relies on several pieces of equipment to function smoothly. At right is the control panel, where run time and electrical production are measured every day. Below, four batteries back up the control system for the generator.*

*The photo on page 1 is of the original turbine that powered the looms of the American Woolen Co., back in the days when the Mill really was a mill.*



"We've generated about \$22,000 worth of electricity since the project began," he notes.

Except for daily visits to log in run time and electrical production and to check on the equipment, the generating station is left unattended. "This is common practice," Al says. "The system is designed to be fully automatic. There are a number of controls on

the turbine that will automatically shut down the system if it malfunctions. The primary responsibility of system maintenance is to ensure that these controls are operating properly." Al adds that the controls also trigger an alarm in the security base control station in Building 23, so that a maintenance worker can be notified in case something does go wrong. ■