

digital

MAYNARD

DIGITAL THIS WEEK



Volume 14, Number 4

March 2, 1987

Digital 'real' winner of America's Cup yacht race

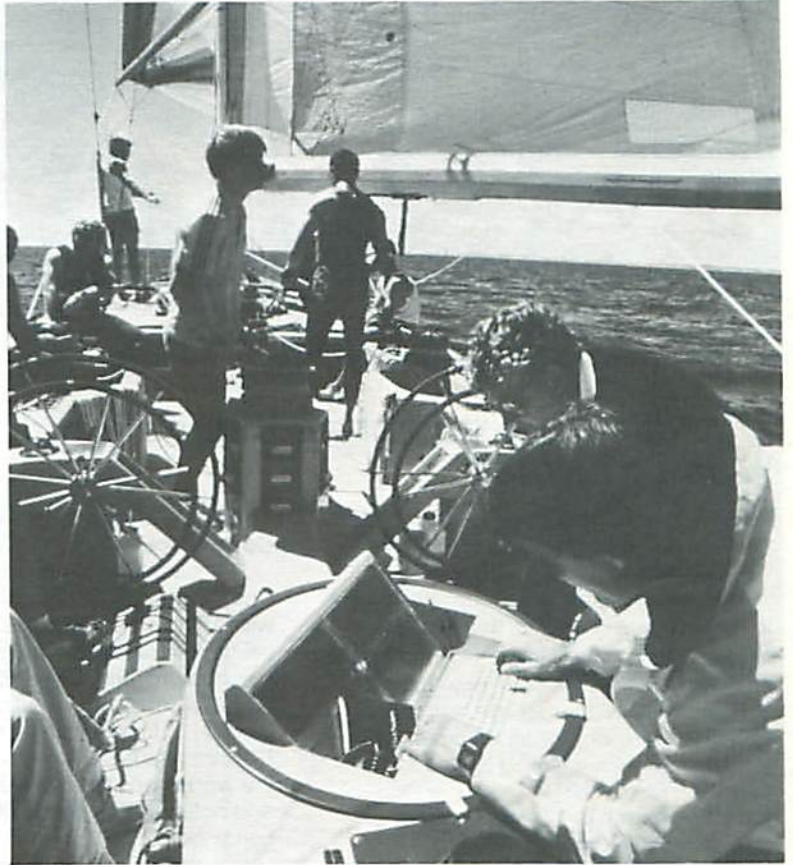
On shore and off, Digital microcomputers were deeply involved in the recent America's Cup yacht race between America and Australia. The two contenders for the Cup -- the American yacht, "Stars and Stripes," skippered by Dennis Connor, and the Australian yacht, "Kookaburra," skippered by Iain Murray -- used Digital computers, but in very different ways.

Digital computers helped to design "Stars and Stripes," the boat that eventually won the Cup back from Australia. During the race itself, wind speed, wind condition and temperature were collected by sensors on board "Stars and Stripes," and were radioed to a tender boat containing a MicroVAX II. The information was sent ashore, where the crew analyzed it to set the strategy for the following day's race.

A MicroVAX II on board "Kookaburra" provided information on wind speed and direction, boat speed, compass, heel angle, rigloads, and temperature. Previously, a navigator took measurements every 30 seconds using a calculator and other hand-held tools. But with the MicroVAX II, the Australian crew received data four times a second via graphic display.

The 1987 Cup finals were a rematch of sorts for the Americans and the Australians. "Australia II" beat the American yacht "Liberty" in 1983, breaking the longest known winning streak in sports history.

Ironically, nobody had any inkling that yachts from the two countries would compete again in the 1987 finals. Three years ago, Digital's Australian subsidiary had donated a MicroVAX II to the crew of the "Kookaburra," one of four Australian yachting syndicates competing to defend the Cup. In the United States, Digital had donated a MicroVAX II to "Stars and Stripes," one of six American syndicates challenging Australia for the Cup. ■



Crew members use a MicroVAX II during the recent America's Cup yacht race.

New security standard for electronic accounts introduced

Corporate Security has established new standards for protecting user accounts on Digital's computer networks. Created by the Information Security Committee (ISC), which is concerned with issues related to information security across the corporation, the standards define users' responsibilities for maintaining the security of their passwords and files.

The standards re-emphasize that employees should use Digital's computing resources only for company-authorized activities. Everyone must have formal authorization to receive an account, and may access only authorized accounts or data. This access can be obtained from system managers.

Mike Carter, manager of Corporate Data and Information Security, stresses that users

and system managers alike share the responsibility for system security. The most important thing that employees can do is to safeguard their passwords and their files. The following steps will help ensure that the system and files are secure:

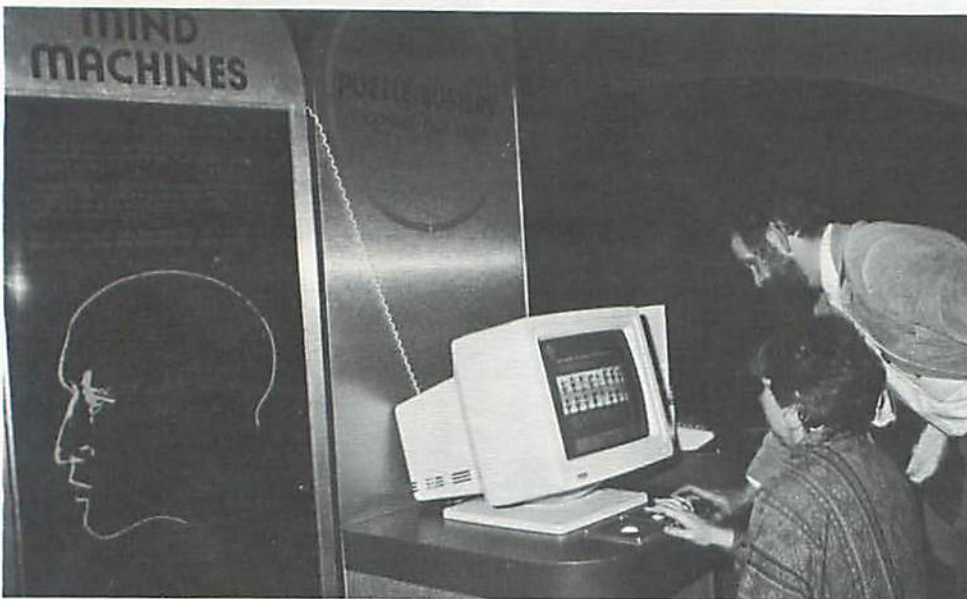
- Passwords must be changed every three months.
- Employees should set the appropriate protection for any files which contain proprietary information.
- The system and/or security manager should be notified as soon as employees detect any unauthorized access to their accounts.
- Terminals should always be logged off the system when not in use.

System operations managers are respon-

sible for setting up and maintaining the overall integrity of their systems. Explains Mike, "System managers must establish written procedures for creating and maintaining user accounts. They also will authorize the creation of new accounts, and will re-validate accounts at least once a year. In addition, they'll monitor account activity and investigate any unusual events or missing system logs. When an employee transfers or terminates, the system manager is responsible for deactivating that account."

Mike adds that local Security personnel can assist groups in implementing the new security standard. "By working together, we can ensure that proprietary information remains proprietary, yet still give employees the system access they need to work effectively and efficiently," he says. ■

Robotics exhibit opens at Museum of Science



The exhibit, "Robotics and Beyond: The Age of Intelligent Machines," has opened at the Museum of Science in Boston. The exhibit, which is sponsored by Digital in association with the Kurzweil Foundation, demonstrates the wide range of applications of robots. Here, visitors challenge an expert computer.

Shrewsbury to celebrate International Women's Week

The Northeast Technology Center in Shrewsbury will celebrate International Women's Week through Friday, March 6 with a variety of special events, including films, slide presentations, and lectures.

Monday, March 2, 11 a.m. — Amphitheater

Janetta Petkus, assistant professor of music at Anna Maria College, will present a slide show and lecture on "Women in Art and Music from the Gothic Period to the Twentieth Century."

Tuesday, March 3, 11 a.m. — Ward Conference Room

"The Life and Times of Rosie the Riveter." This award-winning documentary examines the role of women as they moved into the workplace during World War II and forever changed attitudes about working women.

Thursday, March 5, 11 a.m. — Ward Conference Room

"Harassment and Sexual Harassment." During this one-hour workshop, participants will learn what constitutes harassment and sexual harassment, what actions can be taken to prevent or stop harassment, and Digital's policy on harassment. "The Power Pinch," a documentary narrated by Ken Howard, will be shown at the conclusion of the workshop. The film illustrates both subtle and not-so-subtle forms of harassing behavior.

In addition to these events, the Northeast Technology Center Businesswomen's group will sponsor the following seminars, which will be held in the Amphitheater:

Wednesday, March 4

9 a.m. — Lisa Brown, Manufacturing Valuing Differences manager

10 a.m. — Rose Ann Giordano, vice president, Consultant and Information Systems Marketing

11 a.m. — Erlene Belton, Corporate Employee Relations manager. "Choice: Mediocrity of Excellence"

Thursday, March 5

12:15 p.m. — Sharon Bahn, founder and executive director of Women's Technical Institute, Boston

1:15 p.m. — Charlotte Frederick, Storage Systems group technology manager

International Women's Week is part of Shrewsbury's Celebrating Differences program, a continuing series of events highlighting the differences and similarities among people. All Digital employees and their families are welcome. Contact the Personnel Department at DTN 237-3575 for further details. ■

Literature available from Health Services

Pamphlets on health-related topics are available to employees at local Health Services offices. The brochures, which are free of charge, discuss common health concerns such as high blood pressure and nutrition in a brief, easy-to-read format.

According to Diane Martinsen, R.N., Operations manager, Corporate Health Services, the brochures are more than just entertaining reading. "Staying healthy means staying informed. When people have information, they can then make the choices that will help them lead healthier lives," she says.

Every month, numerous pamphlets are placed in Health Services offices in the Greater Maynard Area. "The pamphlets are published by major pharmaceutical companies, health agencies and the government, and are distributed to companies all across the country," says Diane. "The literature gives employees accurate, up-to-date information about health issues."

Diane stresses that the publications are for information only. "Problems such as pains in the chest, changes in bowel or bladder habits, or recurring headaches should be discussed immediately with a health care professional," she says. "A pamphlet can only list the symptoms of an illness. To learn what those symptoms mean, employees need to seek medical attention."

For more information, or to pick up brochures, contact your local Health Services office. ■

Synercom Technology, Digital sign SCMP

Digital and Synercom Technology, Inc., have signed a system cooperative marketing agreement for Synercom's INFORMAP® and OPIS® automated mapping and facilities management software. Synercom is the first automated mapping firm to sign an SCMP with Digital.

INFORMAP and OPIS are designed to run on virtually all VAX computers, from the VAXstation II/RC to the VAX 8800. INFORMAP is a single georelational database management system that can be shared by many different users, from engineers to cost accountants. It also can be tailored to each customer's needs through user-defined menus and subroutine libraries. OPIS (Outside Plant Information System) is a companion product designed specifically for the telephone industry.

Synercom has been supplying Digital-compatible software for more than 10 years and has been part of the cooperative marketing program for three years. This new agreement provides for an ongoing marketing relationship between the two firms. ■

INFORMAP and OPIS are trademarks of Synercom Technology, Inc.

DIGITAL THIS WEEK



Editor: Kate Nelson

Send stories, photos, ideas or suggestions to DTW, CFO2-3/K23 or call the editor at DTN 251-1307. Electronically, the editor may be reached on DECmail @CFO or at CELICA::KNELSON. Ads must be submitted in writing to Marketplace, CFO2-3/K23. Please direct all Marketplace inquiries to DTN 251-1308.

Digital This Week is published every other week by the Corporate Employee Communication department of Digital Equipment Corp. for employees in the Greater Maynard Area.

Former Celtics star M.L. Carr visits Digital



Former Boston Celtics basketball star M.L. Carr spoke to Digital employees and their families in Littleton recently as part of his 'Stand Tall Against Drugs' campaign. M.L. signs a basketball for Billy Comptois (standing) while Billy's cousin Jason Dastou (seated) waits his turn. The two youngsters are the grandchildren of Littleton employee Anita McCarthy.

Digital, UMass to develop advanced computer networks

Digital and the University of Massachusetts have announced a \$25 million, three-year agreement to develop advanced computer networks on its campuses in Amherst, Boston and Worcester. The networks will have extensive applications in research, instruction, and administration. The university is one of 11 institutions in the country chosen to participate in Digital's Campus-Wide Investment Program, which supports the development of computer networks in higher education.

The university will acquire resources from Digital which will support more than 40 projects ranging from high-level research in computer technology to office automation. In exchange, Digital will benefit from the university's expertise in the use of computer networks in education and research. Digital will have certain rights to research results, such as the development of new software or courseware. As part of the agreement, UMass will serve as a demonstration site for the use of Digital's technology.

"The university has played a leadership role in exploring the uses of technology in education," said Ilene Jacobs, Digital vice president and treasurer. "We expect some significant developments to emerge from our partnership."

UMass president David C. Knapp said the agreement "further the university's standing as a comprehensive research university of national stature and reflects the university's recent success in supplementing public funds with resources from private

sources, thereby maximizing the state's investment in the university."

Several projects on the Amherst campus are expected to advance the frontiers of computer technology. Among them are research in robotics, computer vision, and artificial intelligence in the Computer and Information Science department, and sophisticated applications of computer networking technology in the College of Engineering.

On the Boston campus, the agreement will help implement a long-range plan to link the institution's diverse facilities through a computer network. Special applications include automation of the library and improved computer access for the handicapped using DECtalk, a device that simulates human speech.

Projects at the Medical Center in Worcester include support of patient care and research at the Center for Health and Fitness, development of a database for the emergency room, and enhanced information management in the radiology department.

"The university supplies the lifeblood of the high technology industry in Massachusetts," Ilene said. She noted that the majority of UMass graduates stay and work in the state. At present, 1,100 of them are Digital employees — including Ilene.

Digital's investments in education are part of a long-term commitment to develop computing in academic communities and to support computer science and engineering education. ■

Grace Smith named manager of Public Affairs

Grace Smith has been named to the newly created position of manager of Public Affairs, reporting to Bruce Holbein, manager, Government Relations. In this position, Grace will develop programs to present Digital and its strategic issues to gov-



Grace Smith

ernment officials. She will also produce policy seminars and other public affairs programs, participate in lobbying key government relations issues, and coordinate with Corporate Community Relations on community projects and on cash and equipment contributions which will support Digital's government relations goals. Grace will work out of Digital's Washington office on Pennsylvania Avenue.

Says Bruce, "Grace's activities will complement our existing issues management and tactical lobbying effort in Washington, which is led by Michael Aisenberg, manager of Federal Government Relations. We believe that Grace will enhance Digital's profile with government officials and make them more receptive to our messages on specific issues."

Grace joins Digital from Telocator Network of America, the national trade association for the mobile communications industry. She has also worked in several congressional offices. Grace holds a bachelor's degree from the University of Maryland and an MBA from George Washington University in Washington, D.C. ■

1987 Benefits Statement arriving soon

Once a year, Digital calculates a personalized benefits statement for each employee who is eligible to receive U.S. benefits. This statement is an account of the actual amount or estimated value of each employee's compensation and benefits from the company. The 1987 Benefits Statement will be mailed to employees' homes at the beginning of March.

An employee's benefits statement is unique and cannot be replaced. While Personnel can provide some of this personalized information, much is available to employees only on their 1987 Benefits Statement. Digital encourages each employee to save the statement as a record of current benefits and to compare with future statements.

Employees who have moved recently should notify Personnel as well as the U.S. Post Office of their new address to be sure the statement arrives at their home. ■

THE MARKETPLACE



APPLIANCES

GAS DRYER, Sears, best, timed or automatic cycles, \$200/80, Scott, 225-4596

GAS DRYER, \$35, O'Leh, 223-3704

CARS

'83 TOYOTA CAMRY, 4dr sedn, a/c, R Jones, cruise, white lge rack, 70Kmi, 1 ownr, \$6000, USMRW7:BERICSON

'84 CHEVY MONTE CARLO, 41K, am/fm ster, a/c, r def, ps pb, slvr, 4 nu radis, ex cnd, \$6500/BRO, Jean, 221-5844

'80 CHEVETTE, 4 door hatchback, \$800/80, Charlotta, 262-8382

'86 VW JETTA GLI, loaded, 1yr transferable warrnty, \$10K/80, Gary, 241-4694

'77 TOYOTA CELICA 1ftbk, 5sp, am/fm ster, runs great little rust, 170K, \$1095, Ray, 223-3925

'81 SUBARU GLF, 2dr, blk, auto, ac, pwr snrf/wndows, new tires/brks, lo mi, mint, \$3300/80, Rich, 296-4173

'83 TOYOTA COROLLA, 5spd, a/c, am/fm ster cass, coupe style, 55Kmi, \$5500/80, Nancy, 297-7902

'83 HONDA CIVIC sedn, 4dr, blue, auto, a/c, am/fm cst snrf, lugg rack, exc cond, \$4900, Brad, 226-7746

'66 VW, std, blue, new batt, registered, \$975/80, Marie, 234-5329

'83 PLYMOUTH TURISMO htchbk, 37K, blk, auto, a/c, fwd, p/b, nu tires, am/fm st cass, \$4200, Diane, 282-1614

'85 MERCURY COUGAR, a/c, am/fm cass st, cruise, mnrf, pwr str/wnds, tilt, exc cnd, 25K, \$8200, Donna, 282-1585

'83 RENAULT ALLIANCE, std, gd cond, well maint, 59K mi, \$1500, Denise, 234-4554

'84 VW RABBIT LS, frost blue, std 5 spd, a/c, stereo, 42Kmi, \$4000/80, Lisa, 381-1065

'85 PEUGEOT, 505, GL, 4dr, 5spd, slvr, 24Kmi, 36Kmi or 1 yr warr, \$9600, Larry, 234-5142

'84 GMC JIMMY 4x4, 5sp, a/c, red, slvr, am/fm, rf rack, 30Kmi, exc cond, \$8500, Rosemary, 296-3659

'81 OLDS CUTLASS SUPREME, white w/mar roof, a/c, p/s p/b, am/fm cass, 4 new tires, \$4300, Anne, 223-3048

'66 & '67 MERCEDES BENZ, for handyman to put back together & make one Mercedes, \$900, Kaye, 223-9531

'85 DATSUN 200SX delux, all elec, digital dash, mint cnd, loaded w/optns, 42Kmi, \$8500/80, Kay, 223-5434

'84 CHEVY S10 Blazer, black, 33Kmi, tape deck, exc cond, \$8K/best offer, Ellen, 251-1027

FURNITURE

WATERBED, kng sz, dk pine, bkcs hdbd, 12 dr pdestl, 2 ntstd, matt/lnr/pad/fl kt/htr, \$650/80, Ken, 234-4966

PEDESTL TABL, 2 lvs, E. Allen, 4cap chrs, dk pine, \$600 OCCASNAL TABL, dk pine, E. Allen, \$150, Fran, 297-7508

DRESSR, 9 drwr, 6' lng, nds 1 new runner, gd cnd, \$85 SHUTTERS, misc sz, thral indr, \$20-\$35, Sue, 226-6940

BEDROOM SET, girls 5pc, white, canopy dble bed, ntstn chest, bureau, mirror, desk, \$300, Pam, 297-6684

WATERBED, qn sz bkshlf style, w/heater, side rails, ntstd incl, exc cnd, asking \$200, Cindy, 226-2532

DINING ROOM, Scdnvna Design, Rosewd, brn new, hutch, 6 chrs, tbl w/2lvs, new \$6K, asking \$4500, Bill, 247-2766

CAMEL BACK SOFA, Thomasville, 1k new, beige, \$550, want modrn styl; Refrgeratr, 19 cu ft, \$50, Marie, 232-2224

BEDROOM SET, girls 5pc, including desk, \$350/80, Mary, 276-9528

DINING ROOM SET, formal, oak table, 6chrs, glas china cab, exc cond, asking \$600, Donna, 223-4405

MISCELLANEOUS

CAT CARRIER, used once \$10; stuffed snow tires, like new, \$20/pr, sz 750-14, Dennis, 223-6435

COLOR TV, 19" RCA, \$50/80, Carol, 268-3539

VT 180 ROBIN, 2 dual drives, cheap, Dick, 223-8266

WOODSTOVE, Pillsbury, UL apprvd, takes 19" log, frscrn log carrier, stv tools, \$350/80, Linda, 296-3460

RAINBOW, PC100-B, std model, 256kb memory, amber scrn, flr stand, \$1200/80, Dan, 276-9276

ANSWER MACHINE, Panasonic, w/phn attchd, auto redial 10 mem buttns, rem cntr ans, \$100, Cindy, 276-9872

TIRES(4), 185/70SR15 Vredestein Sprint, \$40; 1pr AR 4CS Spkrs, \$50, uid 1 wk, and great, David, 223-6559

CAMERA, Asaki Pentax KX 35mm, Minolta auto electro-flash 32 w/case, Patricia, 237-3793

CEILING FAN, 52" Universal, w/brass fnish, rvrbl/smr wnter, 3yr warr, got wrng sz, \$60/80, Carla, 223-5106

WHEEL RIMS, 14", pair, (used on Datsun) \$10 for pair Mary, 226-2033

ONE PLOT (two graves), older part of Puritan Lawn Cemetery, Lynnfield, Ma, \$850/negot, Gene, 268-3565

FLOPPY DISK DRIVES(2), 3 1/2", dble dnaity/ided, portabl, bat w/dks, serial port, \$340, Carl, 223-8680

TIRE(1), F70-14 Goodyear Polyglass, never used, \$25, Gordie, 297-5546

SANSUI TURNTABL manual belt-drive w/cart, \$25/80, Roger, 223-2922 after 3 P.M. or RONALD: GROUND

PIANO, Aeolian Cable Imperial top-of-the-line console, walnut, ex cond, \$1600, Lee, 234-4201

MOTORCYCLES

'86 HARLEY DAVIDSON XLH900 Sprtstr, blk, 2400mi, dbl seat, pipes, backrest, \$3400/BRO, Stephanie, 244-6031

'81 SUZUKI GS550, 3.5Kmi, wndshld, lug-rack, stored, needs maint, \$750, Mandy, 234-5351

PETS

TIGER CAT, FREE, female, 1 1/2 yrs old, spayed, all shots, landlord won't allow, Jody, 234-4780

REAL ESTATE

TEWKSBURY, 9rm Georgian split, brckfrnt, 2 1/2 bth lg farm, 2frpl, 1acr, nr 93, \$229K, Gora, 226-6231

OXFORD, MA, 6rm cape, 2c gar, enc porch, 2 3/4 acres pond, \$180K, Dennis, 225-5108

N CHELMSFORD, cape w/lacre, 2bdr, 1b, livr, kit, unfn 2nd flr, encl bwy to gar, \$151900, Cheryl, 226-6086

HUDSON, NH, cntry saltbox, 1 1/2 acr, 3bdr, 1 1/2 bth, 2car gar, ful appl, near I-93, \$139900, Joane, 221-5058

AUBURN, MA, lrge 7rm Gambri, 2frpls, abv grd pool, mins/290/MPike, 25 mins/MRO, \$115K, Roger, 297-5402

TEWKSBURY, beaut end unit twnh, frpl, gar, ovrlks duck pond, 495/93 access, \$146900, Steve, 247-6512

LITTLETON, on 495, under cnstrctn, 2-3 bdr, 2 master bths, ovrlk pond, ideal/2 prof, \$186K, Andy, 274-6564

MERRIMACK, NH, 2bdr twnh, 1 1/2bths/Indry, many spec features, prcd below mkt vl, \$188K, Joyce, 248-4145

WATERVILLE ESTATES, NH, new cndo, 3bdr twnh w/mtn view, wknd/\$360, wk/\$740, Bill, 296-4154

SO NASHUA, newly constructd cndo, 2bdr, 1 1/2bth, balcony, \$88500, Lisa, 264-3566

METHUEN, 2bdr cndo, int only 2yrs old, hwd flrs, frpl, new appl, nice nect/twn, \$94K, Daire, 272-7105

ACTON, Nagog Woods, 3br twnh, 2 1/2b, 1r w/fpl, dr, fn bmt, dck, storag, exc cnd, \$175.9K, Barbara, 223-8969

STONEHAM, twnh, lux 3br, 4lev, 1 1/2yr old, pool, loft fam rm, frpl, mirror walls, \$243.5K, Dave, 274-6892

DELTONA, FL, 2yr old hse, 2br, 15 mn/bch, 1b, cath cell w/a, appl, a/c, carport, 1/3 ac, \$45K, Elaine, 223-8759

HUDSON, NH, 2bdr cndo, 2yr old, 1 ful bth, w/d in unit cntr, a/c, gas ht, appl kit, \$79K, Shah, 223-9155

SO NASHUA, immac 3/4 bdr split, 1 1/2b, huge deck, FHA heat, 8rms, 2min/RT3, quiet nhrd, \$135K, Tom, 251-1948

RECREATION VEHICLES

'83 STINGRAY PWRBOAT, 16' Bowrdr, 120hp Mercr I/O ful instr, galv trlr, fr wtr use, \$6500, Lou, 297-5491

'86 THUNDERCRAFT PWR BOAT, 16' bowdr, 75HP mercr, 2-6gal tnks, cockpit CVR, galv trlr, \$6600/80, Robin, 244-6773

'84 CATALINA 25' SAILBOAT, Mercury 7.5 OB, 3 sails, VHF, much more, \$16.5K, Jerry, 234-4986

FIBERGLASS BOAT, 14', w/40 horse Evinruds mtr, exc cnd w/trlr, wtr skis, elec shft, \$1200/80, Duane, 274-6613

RENTALS

NORTH CONWAY, ski chalet, ful equip, din rm, slp 12 without moving a thing, Ron, 223-3740

W YARMOUTH, 2bdr cttage, 1/2 mi priv bch, Seagul Bch tenn, \$450/wk Jul-Aug, \$375 Jun-Sep, Steve, 225-4686

YORK BEACH, MAINE, bch frnt eff cndo, on Long Sands slp 4, beau spot, \$375/wk, off \$295/wk, Mike, 272-7327

LOON MTN, 1 br cndo, slp 4, sauna, ind pool, shttl/ slopes, Jacz, \$575/wk, 2/13-2/23 xtra, Faith, 223-7725

LOON MTN, cndo on river, 2br, ind pool/hlth club hotel serv, \$280/wknd, Dan, 296-4093

MARCO ISLAND, FL, wraparound cndo on ocn, 2 br, 2b, fl furn, min/2wks, avl 4/1, \$1850/mo, Barbara, 234-4793

MARLBORO, 3bdr rch, frpl 1v rm, eatin kit, ful bmt, bch rights, \$900+all util, no pets, Ron, 297-4636

SUGARLOAF, USA, quiet slopende cndo, ski in/out, 2bdr 2b, slp 6, fpl, cbles, fl furn, wk/wknd, Dennis, 226-7691

SUGARBUSH, VT, ski cndo, ski to & from slopes, near village, slps 5, Bill, 223-9811

LOON MTN, 3 min, new studio eff cndo, slp 4, mod kit in pool, whlp, sauna, \$375/wk, wknd avl, Lori, 296-4161

MILFORD, lux cndo, 2bdr, 1 1/2b, balcny, gym, pool, tenn clbhs, picn, strage, avl 4/1, \$699/mo, Heinz, 268-3216

HOPEDALE, 2bdr, 1 1/2b twnh, w/w, w/d hkup, deck, ful basement, \$850+util, Rita, 296-4294

W. YARMOUTH, CAPE COD, 3bdr ranch, 1mi/Seagul Bch, slp 6, nr/shop/Hyannis, avl May-Sep, \$650/w, Pat, 297-5310

WORCESTER, br new cndo, 2bdr, 2b, clone/majr routes, \$650/mo+util, nonsmkr pref, Debbie, 297-4886

FITCHBURG, 1br, nr RT 2, lge eatin kit w/pntry, lg lr bckdy, prkg incl, no util, w/d hkup, Terri, 244-6052

CHATHAM, CAPE COD, 4bdr, 2bth, appl, phone, cable TV, mile to beach, Peter, 251-1173

LANCASTER, 2bdr house, appl, w/w & hrdwd, lg fam rm, quiet nhrd, lndscpd yrds, \$850+util, Karen, 223-9886

LOON MTN, 2bdr twnh, slp 6-8, ful equip, frpl, clbhs sauna, 1mi/mtn, \$300/wknd, \$550/wk, George, 276-9623

AUBURN, twnh, lux 2bdr, 1 1/2b, ful cellar, ful appl, no dogs, \$675/mo, Dick, 223-4583

WHITE MTNS, ski chalet, 4bdr, 2b, fplc, slp 10, nr Loon Cannon, avl Sun-Fri, \$300, Carl, 223-8907

LOON MTN twnh, slp 6-8, 1 mi to mtn, ful equip, clbhs, sauna, \$450/wk, \$225/wknd, Gary, 292-2413

OVERLOOKING CROTONED MTN, 1bdr ski cndo, slp 4, nightly/wkly, reasonable, Lori, 276-8632

HUDSON, NH, 2bdr cndo, 2yrs old, 1 ful b, w/d in unit cntr, ac, gas ht, appl kit, \$625+util, Rahah, 232-2429

BREWSTER/OCEAN EDGE, 2br/2bth cndo, pool/golf/tennis bch shttl, \$600/wk, June-Aug, Tim, 264-4650

FLORIDA, 2bdr twnh, slp 6, 3bth, scrn prch, ful equip kit, tenn, htd pl, jac, 3/21-3/28, \$700, Nancy, 223-7041

WHITE MTNS, ski twnh, 3bdr, 2b, fplc, slp 8, clubhs, pl rqtbl, whrlpl, \$300/wknd, \$300/midwk, Jeanne, 264-6540

CHELMSFORD, 3br ranch home, frpl, dshwhr, w/d, 2 car gar, \$925/mo, Ray, 264-4512

NO CONWAY, 3 bdr ski chalet, slp 8, wd stv, ful furn, nr Attitash/Wildcat/Cranmr, wk/wknd, Diane, 284-6807

ROOMMATES

M/F, shr 2 bdr apt, Royal Crest/Marlboro, \$314/mo + 1/2 util, Sanjeev, 297-2446

F, nonsmkr, in 20s, shr new furn cndo/Framingham, Indry, pool, tennis, \$350/mo+elec, Linda, 283-6253

F, Acton, shr 2bdr complex apt, \$340/mo inc ht, pool have 1 cat, nonsmkr, need lat & last, Donna, 225-5277

F, non smkr, shr 2bdr cndo, \$333(inc ht) +1/2 util, Exit 1, Rt 3, Nashua, Usha, 381-2875

M/F, Marlboro, shr 7 rm cozy cape, indept envr, w/d no smking, no pets, \$600 inc util, Debbie, 223-4305

ROOMMATE, shr new 3 bdr twnh/Merrimack, NH, nr RT 3 \$350/mo, inc all util, pool, tennis, Lorene, 283-7466

M/F, shr mod 2 bdr apt Burl/Wob, \$370/mo, incl heat & pool, 5 min/OFO or UFO, James, 274-6873

SPORTING GOODS

SKI BOOTS, Koflach 511 Competition, sz 8 1/2, men's, skied on only twice, \$200/80, Stan, 221-5062

LADIES GOLF CLUBS, Wilson Beth Daniels 7pc starter set, used 3 times, \$79, Laura, 251-1944

WANTED

AUTOMOBILE CB ANTENNA, magnetic mount type, Cindy, 223-6448

NIKKOR PHOTOGRAPHIC LENS, 35mm wide angle to 1977 Nikkormat FT2 camera/similar cam, David, 249-4137

PORT-A-CRIB and HIGHCHAIR, in good cond, Tony, 223-1277

news briefs

Digital Hockey League begins playoffs

The Digital Hockey League begins the first round of playoff action on Sunday, March 8 at 10:45 a.m. at the Nashoba Valley Olympia on Route 111 in Boxborough. For more information, call Mark St. Jean, DTN 292-2455 (USMRW4::MSTJEAN).

Deadlines for 'Digital This Week'

Deadlines for "Digital This Week" have been established to help employees plan events and publicity around certain editions of the paper. Deadlines do not pertain to Market-place, which is first come, first served. The next three issues and deadlines for DTW: March 16 issue -- March 4 deadline
April 6 issue -- March 25 deadline
April 20 issue -- April 8 deadline.

Discount rate increases for internal orders

The Management Committee of the Internal Equipment Group (IEG) has increased the discount rate for internal orders from 76% to 80% off Maynard List Price. The change, which is effective immediately, applies to all existing orders which have not been shipped as of the beginning of February.

Successful blood drive at Parker Street

The January blood drive sponsored by Parker Street Health Services was one of the most successful ever. More than 100 units of blood, some of which will be broken down into components such as plasma and platelets, were collected from Digital employees.

Northboro to hold 'Substance Awareness Day'

Northboro Health Services, Employee Assistance Program, and Personnel will co-sponsor a "Substance Abuse Awareness Day" on Wednesday, March 18 from 9 a.m. to 3:30 p.m. Speakers will discuss such topics as the new drunken driving law, substance abuse in the work place, the effects of substance abuse on family members, and how to get help. For more information, call NRO Health Services at DTN 234-4313.

Quality Resource Guide available in late March

The Corporate Quality group has produced for internal use a Quality Resource Guide that will be available at the end of this month. The guide lists resources such as committees, quality groups, education courses, task-teams, and media. To receive a copy of the guide, or to make changes to it, contact Winni Anketell @ MLO or on electronic mail at SACMAN::ANKETELL.

Boston University MBA program to hold information session

An information session about the Boston University MBA program will be held on Thursday, March 19 from 5 p.m. to 6 p.m. at Educational Services, 12 Crosby Drive, Building B, Bedford.

BU's Suburban MBA Program consists of 16 courses which can be completed in less than four years. Classes meet once a week from 5:30 p.m. to 8:30 p.m. at Educational Services. Students can take either one or two classes per semester and can begin the program in January or September. The Graduate Management Admission Test (GMAT) is required for all applicants.

To reserve a space for the information session, or to receive a catalog and an application to the Suburban MBA Program, call BU at (617) 353-2670.

MS Society to hold Ski Escape Weekend

The Multiple Sclerosis Society, Massachusetts Chapter will hold its second annual Ski Escape Weekend March 13-15 at Waterville Valley, N.H. The Ski Escape will benefit the Multiple Sclerosis Society.

Participants are asked to raise a minimum of \$100 in sponsored pledges. Pledges are used for national multiple sclerosis research and local support services. For more information, contact the MS Society at (617) 890-4990.

Stow loaning posters from art exhibit

Posters from the Stow art exhibit, "A World of Difference," are available to lend to other facilities. The exhibit, which was sponsored by Field Operations Headquarters Personnel, features eight posters that deal with recognizing prejudice and fostering intercultural harmony. The art work was created by Massachusetts grade- and high-school students. "A World of Difference" is a prejudice awareness and reduction campaign sponsored by WCVB-TV, Channel 5, the Anti-Defamation League of B'nai B'rith, and a number of Massachusetts companies, including Digital.

For more information about the exhibit, or to arrange a loan, contact Barbara Regan, DTN 276-9302 (PRYDE::BREGAN).

educational opportunities

Technical Seminars

This is an integrated calendar of seminars for HLO, MRO, LKG, APO, LIN, ZKO, MLO, and SHR.

Unless otherwise indicated seminar locations are as follows:

APO	Training Center
HLO	Hall of White Mists
MRO	Hardware/Software Con. Room
LKG	LKO1-3 Cafeteria
ZKO	Babbage Aud.
MLO	Mill Caf. Con. Room
SHR	Room will be announced
LTN	Cafeteria

APO	289-1226	ERIE::SCOTT
HLO	225-4068	HUDSON::FIDLER
MRO	297-5097	HYPER::CSMALL
SHR	237-3258	APOLLO::HEDIN
LKG	226-7065	DELNI::NAPERT
ZKO	381-1057	ZEKE::LIBRARY
MLO	223-3674	MILRAT::COTOIA
LTN	229-6900	PHENIX::BETTE

March 3, 2-4 p.m., SHR

Elsa Berenberg, Digital, Burlington, Vt.
"The Implementation Process of the Deming Philosophy"

March 4, 3-5 p.m., LKG

Henry Yang, Digital
"Fiber Distributed Data Interface (FDDI)"
 Part 2 of a 4-part series

March 6, 9 a.m., APO

Bill Bennett, Digital
"Technology Implementation: A Practitioner Perspective"

March 10, 10 a.m., HWM-HLO1

George Hetrick, Digital
"MCC Parallel Processing System Research Facility"

March 11, 10 a.m., HWM-HLO1

Randy Davis, MIT
"Model-Based Reasoning: Recent Progress"

March 11, 3-5 p.m., LKG

Don Knudson and Semyon Ginzberg, Digital
"Optical Fiber Communications: Physical Layer Issues"

March 12, 10 a.m., HWM-HLO1

Graeme Dixon, University of Newcastle-on-Tyne
"Exploiting Type Inheritance to Implement Recoverability"

March 17, 10 a.m., HWM-HLO1

William Clancey, Stanford
"Qualitative Models and Instruction: An Overview of GUIDON2 Research"

March 18, 3-5 p.m., LKG

Don McMahon, Digital
"Optical Multiplexed Network Concepts"

March 19, 2-4 p.m., SHR

Dr. Irvin Krause, Coopers and Lybrand, Boston
"Refocusing on Engineering to Defend Against the Foreign Threat to High Tech"

March 20, 10 a.m., HWM-HLO1

Ali Mili, University of Tunis, Tunisia
"Strongest Invariant Functions"

March 24, 10 a.m., HWM-HLO1

Scott Midkiff, Virginia Polytechnic Institute and State University
"Switch-Level Test Generation for CMOS"

March 25, 3-4:30 p.m., LKG

Bruce Luhrs, Digital
"Fault Management Model for Distributed Systems"

March 26, 9 a.m.-noon, APO

Interconnect Technology Process Development Group P&DS
"Packaging and Assembly Process Technology Development Seminar"

March 26, 10 a.m., HWM-HLO1

Vinod Agarwal, McGill University
"Design for Easily Testable and 'BISTable' Programmable Logic Arrays"

March 31, 10 a.m., HWM-HLO1

Alain Rappaport, Neuron Data
"NEXPERT OBJECT and the Knowledge Design Process" ■

Boston area seminars for April

Note: Seminars are frequently attended by both customers and employees. For registration information, call DTN 249-4949 or (617) 276-4949.

VAXcluster System Management

April 1-3 Course No. EY-2342E-SO

Advanced Workshop in VMS System Management

April 1-3 Course No. EY-4830E-SO

Artificial Intelligence for Managers

April 2 Course No. EY-5286E-SO

Local Area Networks: A Practical Approach

April 6-8 Course No. EY-1011E-SO

VAX/VMS Real-Time Applications

April 6-9 Course No. EY-5289E-SO

VAXcluster Technical Concepts

April 7 Course No. EY-5230E-SO

Introduction to Expert Systems and OPS-5

April 8-10 Course No. EY-4832E-SO

VAX/VMS System Performance Management

April 8-10 Course No. EY-3858E-SO

VAX Bus Interconnect (VAXBI) Design

April 13-14 Course No. EY-5282E-SO

ALL-IN-1 Office Automation: A Managerial Overview

April 20-21 Course No. EY-2401E-SO

Advanced Data Communications

April 20-22 Course No. EY-1366E-SO

Getting the Most from Your All-IN-1 System

April 22-24 Course No. EY-2080E-SO

Digital Management Education offering professional development courses

DME will offer a variety of professional development courses this spring, which will help employees develop the skills needed to increase their productivity. Courses cover such topics as building effective customer relations, effective writing skills, communication skills, and time management. Special courses in project management, presentation skills, negotiation and problem analysis and decision making also will be offered.

Contact the DME Registrar at DTN 249-1881 or DTN 249-1882 for information and schedules. ■

Revised VMS handbook, self-paced courses available for users, systems managers

The newly revised VMS handbook and related courses are now available from Educational Services and Digital Press. These may be used as self-contained units or as supplements to more in-depth training about VMS system management, or about VMS in general.

VAX Hardware Handbook Set, Vols. 1 and 2 (Part No. EY-6730E-DP)

Introduction to VAX VMS System Management (Part No. EY-2691E-FP, floppy; -TU, TU58; -MT, 1600 bpi magtape)

VAX/VMS System Management (Part No. EY-2668E-FP, floppy; -TU, TU58; -MT, 1600 bpi magtape)

VAX/VMS Advanced Command Procedures (Part No. EY-2685E-FP, floppy; -TU, TU58; -MT, 1600 bpi magtape; -RX,

RX50 floppy diskette; -TK, TK50 cassette)

U.S. employees (other than Field Service and Software Services personnel) may order the above-mentioned courses and book through a charge to cost centers by sending a memo to Educational Services' Order Processing group in Billerica, Mass. Address VAXmail memos to EDSVAX::MAILPO and DECmail memos to MAILPO @ BKO. Include your name, badge number, cost center, mailstop, full facility address, quantity, title, desired media, and part number. To order by phone, call (1-800) 343-8321.

Field Service and Software Services employees may order these courses or the equivalent employee courses by contacting their Area Logistics training contact. Employee courses are listed in the employee course schedule and course catalogs. ■

Office Applications Training April course schedule

All course locations are PKO3-1/Pole 8H unless otherwise specified. Dates are subject to change. To enroll, complete an OA Enrollment form and send to the OA Registrar, PKO3-1/B11.

Concepts

WPS Strategies and Presentations (2 days) April 22

Intro to Operating Systems and Hardware
Intro to VAX/VMS (2 days) April 6, 9, 13, 21, 27

Learn Rainbow (1 day) April 2, 13, 27, 30
MS-DOS® (1 day) April 13

Multi-Function Office Systems

ALL-IN-1 System Manager (2 days) April 6

ALL-IN-1 System Overview (1 day) March 30

ALL-IN-1 Basic User (3 days) April 27

ALL-IN-1 Tailoring (3 days) April 8

ALL-IN-1/VMS WPS-PLUS for Managers (1 day) April 10, 30

ALL-IN-1/VMS Basic WPS-PLUS (2 days) March 31

ALL-IN-1/VMS Advanced WPS-PLUS (1 day) April 2

Information Management Systems

DATATRIEVE I (1 day) April 8, 13, 24

DATATRIEVE II (2 days) March 26
DATATRIEVE REPORT WRITER (1 day) April 15

dBASE II/III® (2 days) April 9, 28

VAX VTX Information Provider (3 days) April 21, 28

VAX VTX System Operator (2 days) April 23

Document Processing

DECpage (1 day) March 30

EDT (1 day) April 2

RUNOFF (1 day) March 27

DECmate Basic WPS (3 days) April 6, 14, 27

DECmate Basic WPS for Managers and Supervisors (1 day) April 21

LNO3 Font Management (1 day) April 2, 9, 13, 24, 30

Rainbow Basic WPS-PLUS (2 days) April 6
Rainbow Advanced WPS-PLUS (1 day) April 14

Financial Applications

DECcalc (2 days) April 8

Rainbow Multiplan (2 days) April 1, 6, 21

Integrated Applications

Lotus 1-2-3® (2 days) April 9, 15, 28

Advanced Lotus 1-2-3 (1 day) April 1, 24, 30

Rainbow Applications for Managers (3 days) April 22

Business Graphics

PRO/SIGHT (1 day) April 7

DECslide (1 day) April 14

DECgraph (1 day) April 16

Overhead Express (1 day) April 8, 14, 21, 23

Rainbow Graphics (1 day) April 8, 27

Electronic Messaging and Communications

VAXmail (1/2 day) April 6, 13, 29

DECmail (1 day) April 7

Rainbow Communications (1/2 day) March 30 ■

CP/M is a registered trademark of Digital Research. dBase II is a trademark of Ashton-Tate. MS and Multiplan are trademarks of Microsoft Corp. 1-2-3 and Symphony are trademarks of Lotus Development Corp. Overhead Express is a trademark of Business and Professional Software.



EMPLOYEE KUDOS

Walter Stevens, a machinist in the Mill, recently received the Silver Beaver award from the National Council, Boy Scouts of America, for his years of service to the Scouts. The Silver Beaver Award is the highest award for volunteer service given by the Boy Scouts. Walter has been involved in Scouting for 30 years.

Zarka Cvetanovic, principal software engineer in the Advanced Development group in Acton, has published a technical paper, "The Effects of Problem Partitioning, Allocation, and Granularity on the Performance of Multiple-Processor Systems." The paper will appear in the April issue of "IEEE Transactions on Computers." Less than 10 percent of all papers submitted to the journal are accepted for publication.

A.J. Overton, principal engineer with the Advanced Manufacturing Technology — East group in Shrewsbury, has received the "ADEPT Automation Pioneer" award from Adept Technology, Inc., a California-based robot manufacturer, for his outstanding work in robotics. He was involved in building the MAYA assembly line in the Springfield plant. ■



March 15
Enrollment
Deadline
for April 1
SAVE
Membership

SAVE

SALARY ACCUMULATION VEHICLE FOR EMPLOYEES

Funding available for Advanced Development projects

The Corporate Research and Advanced Development Committee (RAD) has funds available to support innovative advanced development projects in areas of technology that are of interest to Digital. In the past, the committee has supported projects in areas of technology such as software, hardware, computer systems, and manufacturing.

To coincide with the current RAD funding cycle, proposals should reach the committee by Friday, March 20. However, in special cases, the committee is prepared to consider proposals at any time. Employees with ideas should contact their managers or Mildred Barrett, RAD administrator, at DTN 225-5503 (RDVAX::BARRETT). ■

Digital Courier Service now operating round-the-clock

The Digital Courier Service (DCS) now provides round-the-clock, same-day service to Digital and vendor facilities in eastern and central Massachusetts and southern New Hampshire. DCS picks up and delivers urgent shipments door to door.

Packages are limited to 50 pounds each (500 pounds total shipment). Prescheduled pick-ups are available on a daily, weekly, or monthly basis. DCS will also pick up and deliver on holidays and weekends.

Any material leaving a facility must be accompanied by the proper shipping documentation, such as an Interplant Bill of Lading (IBL), Shipping Bill Authorization (SBA), or Property Removal Pass. For more information, call the Van Fleet at DTN 223-5344 or your local shipping department. ■

Marlboro sponsoring cross-country ski outing

Marlboro Employee Services will sponsor a cross-country ski outing for Digital employees and their families on Monday, March 9 from 5:30 p.m. to 10 p.m. at the Weston Ski Touring Center, Route 30, Weston.

The trail fee is \$3.50; lesson and trail fee cost \$8.50, and lesson, equipment rental and trail fee cost \$12.50. Registrations must be received by Thursday, March 5. For more information or to register, call Marilyn Perry at DTN 297-5208. ■



Digital employees are stars on stage and behind the scenes when the Sudbury Savoyards present Gilbert and Sullivan's comedy "Iolanthe" on March 5, 6, and 7 at Lincoln-Sudbury Regional High School. Shown are: (front row) David Larrick and Sally Osborn; (middle row) Waky Waks, Bill Fisher, and John Covert; (back row) Ray Thackeray, Bjorn Engberg, Karen Rogers, Rich Olsen, Brian Harris, and Lisa Gertzis. All proceeds go to the relief of world hunger. For further information about the Sudbury Savoyards and "Iolanthe," contact Sally Osborn at DTN 237-3233 (HEADS::OSBORN).

EAP sponsoring lunchtime seminars on adoption

Throughout March, the Greater Maynard Employee Assistance Program (EAP) will sponsor a series of lunchtime seminars about adoption. The seminar will provide adoption information and referrals. Guidelines which will help in making the decision to adopt will be presented as well. The sessions are open to all Digital employees and their families; just bring a lunch. Seminars run from 11:45 a.m. to 1 p.m. on the following dates:

Facility	Date	Conference Room
Marlboro (LMO)	March 3	Ethernet
Conford (CFO2)	March 11	Dickens
Hudson	March 12	Hall of White Mists
Powdermill Road	March 16	Nashoba
Virginia Road	March 18	Bell
Parker Street	March 25	Sudbury
Stow	March 31	Management Sciences
Acton (Nagog)	April 1	Kyoto

For more information contact EAP at DTN 223-4439. ■

Employees, families invited to watercolor exhibit at Worcester Art Museum

"American Traditions in Watercolor: The Worcester Art Museum Collection," opens on Sunday, March 8. Digital is the national corporate sponsor for the watercolor exhibit, which contains paintings by artists such as Winslow Homer and John Singer Sargent. The exhibit will be on display through May 10. After that, it will travel to the Smithsonian Institution's National Museum of Art in Washington, D.C., and to the Minneapolis Institute of Art.

In addition, Corporate Employee Services

and Recreation will co-sponsor a "Super Sunday" at the museum on March 29, from 1 p.m. to 5 p.m. Employees and their families are invited to view the exhibit and participate in a day of demonstrations, tours, music, and films. Ticket forms are available in employee information racks located in Greater Maynard Area facilities.

For more information, contact your local Employee Services and Recreation representative. ■