

Saint Casimir's Reunion and Bazaar

PARISH HALL

MAYNARD, MASSACHUSETTS

DECEMBER 5, 6, 1959

presents

THIS ANNUAL CHRISTMAS PROGRAM

THE COMMITTEE

Victoria Algierska	Alice Martino
Blanche Andruszkiewicz	Barbara McGee
John Bandalewicz	John McGee
Pauline Bandalewicz	Adele Milewski
John Bandalewicz, Jr.	Toni Milewski
Robert Butler	Joseph Nahorski
Norman Castle	Mary Nahorski
Helen Chyzus	John Novick
Albert Cowles	Robert O'Neil
John Cowles	Stella O'Neil
Joan Cowles	Eugene Phaneuf
Malvina Cowles	Helen Phaneuf
Victoria Gallagher	Ben Pieciewicz
Helen Girdziewski	Charles Pieciewicz
Joseph Girdziewski	Frances Pieciewicz
Josephine Grant	Jean Pieciewicz
Ben Gudzinowicz	Jeanne Pieciewicz
Michael Gudzinowicz	Loretta Pieciewicz
Mary Howe	Stanley Pieciewicz
Stanley Jakusik	Joseph Pozerycki
Capt. Stanley Jurgielewicz	Theresa Pozerycki
Joseph Jurgielewicz	Peter Pronko
Valerie Jurgielewicz	Leonard Rychlik
Stanley Kodzis	William Stades
Robert Konowicz	Mary Szczzerzenia
Alex Kulewicz	Stanley Trakimas
Stanley Kulik	Mary Troisi
Alfons Krysiemiel	Edwin Wasiuk
Helen Lech	Helen Wasiuk
Stella Lehto	Walter Wasiuk
Harold Lyons	Walter Wasiuk, Jr.
Laura Lyons	Xaviera Wasiuk

DIVINE ANTITHESES

by Paul Stander, S. J.

Omnipotent God,
Mighty and strong,
Heralded by
His angels' song,

Is born an infant,
Helpless small,
Royal prince
In cattle stall.

Eternal God,
Whom the world cannot hold
Is imprisoned in flesh,
An hour old.

A little girl
Is here to nurse
The Creator of
The universe,

With only a craftsman
Standing guard;
The God of armies
Is his Ward.

And the world must bow
To His commands
Who lies here wrapped
In swaddling bands.

Greetings and Blessings

on this

Our Lord's Birthday

. . . throughout the New Year

THE REVEREND FRANCIS S. MIASKIEWICZ, D. C. L., *Pastor*



JOSEPH P. DUFFY and SONS

representing

THE I. T. VERDIN COMPANY

Bell Ringers of America

And the Word was made flesh,
And dwelt among us.

— John I, 14.



THE REVEREND FRANCIS D. CHMAJ, *Pastor*

OUR LADY OF OSTROBRAMA

West End

Boston, Massachusetts

DEDICATION — Affectionately and prayerfully we dedicate this Program Book and our Annual Bazaar to the memory of the late Virginia Szczerzen. God gave Her to us and it seemed He gave Her to us forever. We respected, admired and loved Her as She walked in our midst, a kindly, beautiful, gracious, gentle Lady Who toiled ardently in every cause that helped Her Parish and Her People. And then, to us it seemed all too prematurely, God called Her unto the joys of Eternity. Rest in Peace, Virginia, and even from Heaven please continue to help us at Saint Casimir's.



RED COACH GRILLS

BOSTON POST ROAD

WAYLAND

MASSACHUSETTS

ROUTE No. 9

FRAMINGHAM

MASSACHUSETTS

Famous for Charcoal Broiled Steaks



MAWHINNEY MOTOR SALES

LEXINGTON

MASSACHUSETTS

Volunteer 2-2322

Chrysler



Plymouth

Our Faith is a form of life. Its life is the life of God, brought down from Heaven through Christ, communicated to us through the Blessed Sacrament. For those who accept literally the pledge of Christ, there is no other means of access to the Divine Life. He Himself said it: "Except you eat the Flesh of the Son of Man and drink His Blood, You shall not have life in you!" — EMMANUEL.



Fine Arts Theatre

and

Art Gallery

Our religion is not a religious sect, a denomination. It is not a cultural system. It is not a political project; neither is it a social theory. The Catholic Faith is not even a body of truths to be believed or of precepts to be obeyed. It is a form of life, a way of life to be followed. It is the life of Our Lord and Saviour as He intended that life to be lived and perpetuated by His priests and shared by all who, believing in Him partake of His Body and His Blood. — EMMANUEL.



"Good Fuel Makes Good Friends"

CALL

MAYNARD COAL COMPANY, INC.

"At the Bridge"

125 MAIN STREET

TELEPHONE 23

Fuel Oils — Coal — Oil Burners



"For that Warm Feeling Inside"

STOP IN AT THE

OLD TIMERS CAFE

"At the Bridge"

MAIN STREET

MAYNARD

Stanley Zancewicz, Proprietor

NEEDED: THE UNCOMMON MAN — At the FBI National Academy graduation last June, His Eminence, Cardinal Cushing, commented on the absurdity of emphasis on the "common man" and urged that we "seek uncommon heroism and uncommon stature, to avoid the merely common and to aspire after that, which is more noble, more truly humane and more nearly divine." Speaking of the "uncommon dedication, cunning and capacity for damage of the hard-core Communists who remain at work in America," His Eminence appealed for leadership which offers "uncommon qualities of the intellectual, moral, personal and organized kind needed to give America not ordinary, but uncommon protection against those who would destroy her." This is precisely the kind of leadership the church seeks, needs and tries to develop.



SHEEHAN & WHITE

Funeral Service

RICHARD T. WHITE, *Funeral Director*

4 BANCROFT STREET

MAYNARD

MASSACHUSETTS

Telephone TWinoaks 7-7500

LEADERSHIP — POLITICAL AND OTHERWISE NECESSARY ATTRIBUTES:

Hide of a Rhinoceros
Memory of an Elephant
Persistence of a Beaver
Native Friendliness of a Mongrel Pup
Heart of a Lion
Stomach of an Ostrich
Humor and ubiquity of a Crow
In Matters of Principle, the Stubbornness of a Mule.



POPLIN'S

FINE FURNITURE — APPLIANCES

186 MAIN STREET

HUDSON

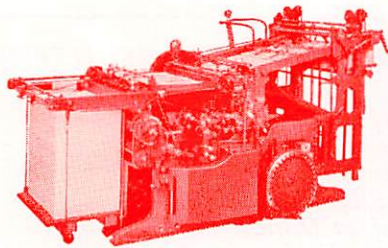
19 CONCORD STREET

FRAMINGHAM



MURPHY & SNYDER, INC.

Printers



This Program Is a Sample of Our Work

7 Waltham Street Maynard, Massachusetts

Junction of Routes 27 and 62

Telephone TWinoaks 7-7952

REWARD IN THE STRUGGLE — *There is much consolation for leaders and followers alike in these words of John Caldwell Calhoun: "I hold the duties of life to be greater than life itself, and that in performing them manfully, even against hope, our labor is not lost, but will be productive of good in after times. Indeed, I regard this life very much as a struggle against evil, and that to him who acts on proper principle, the reward is in the struggle more than in victory itself, although that greatly enhances it."*



ERIKSON'S DAIRY

Quality Dairy Products for Particular People

All our milk produced in the towns of
Acton, Bolton, Boxboro, Maynard and Stow

STEP UP TO A QUALITY MILK AND ENJOY THE DIFFERENCE

Butter and cottage cheese delivered on our routes.
Bulk ice cream available at our dairy.

ALSO

Ice cream cakes available for Thanksgiving and Christmas

10 GREAT ROAD

MAYNARD

Telephone TWinoaks 7-2438

"Slow me down, Lord. I am going too fast; I can't see my brother when he's walking past. I miss a lot of good things day by day; I don't know a blessing when it comes my way . . . Slow me down, Lord, so I can talk with some of Your angels. Slow me down to a walk!"

MONTI GRANITE CO., INC.

Wholesale Manufacturers

266 CENTRE STREET

QUINCY

LEADERSHIP'S COMMON DENOMINATORS — He is a man who has arrived the hard way. With a tremendous capacity for work, driving energy, physical self-discipline, and a genius for organization . . . as a leader he is tough, dynamic and decisive . . .

Hudson 220

Marlboro 333

BONAZZOLI OIL CO.

and

G. BONAZZOLI & SONS

Hudson, Massachusetts

Bridges

Highways

Water and Sewage

Railroads

Riggers

Buildings

GMC Truck Sales and Service (Gas and Diesel)

Coal, Coke and Wood

Oils, Heavy and Light for Commercial and Industrial Usage

Wholesale Hardware

Wholesale Lumber

Television - Radios

Air-Conditioning

Heating

Refrigeration

Saint Casimir Parish Holy Name Society

MAYNARD, MASSACHUSETTS

Spiritual Director

REVEREND FRANCIS S. MIASKIEWICZ, D.C.L.



OFFICERS

President

JOSEPH P. GIRDZIEWSKI

Vice-President

ALEXANDER W. KULEVICH

Secretary

JOHN J. McGEE

Treasurer

EDWIN S. WASIUK

Publicity

ALBERT D. COWLES

COMMITTEES

Sick and Vigil

JOHN BANDALEWICZ
FRANK ALEXANDROWICZ
WALTER P. WASIUK

Military

JOSEPH S. POZERYCKI

Program

CHARLES F. PIECEWICZ

Decent Literature

BENJAMIN J. GUDZINOWICZ
STANLEY M. KULIK

Marshal

JOSEPH PIECEWICZ

LIGHT A CANDLE TO MARY:

*Light a candle to Mary
Engrave her name in your heart
Light a candle to Mary
From her way never depart.*

*Light a candle to Mary
And when your days are through
Light a candle to Mary
She will light the way for you.*

ALBRE MARBLE AND TILE CO., INC.

BOSTON, MASSACHUSETTS

Tony, Johnny, Dick and Pa
ACME SUPPLY CO.

Firestone

20 NASON STREET

MAYNARD

Telephone TWinoaks 7-7183

Shop Telephone
Concord, Mass.
EMerson 9-9730

Wetherbee Street
East Acton, Mass.

LEO S. CAVELIER, INC.

*Electric, Gas and Inert Gas Welding
Fabricating and Erecting*

Mail Address: R.F.D. 1, SOUTH ACTON, MASSACHUSETTS

LIGHT A CANDLE TO MARY:

*Light a candle to Mary
Along the hard, stormy way.
Light a candle to Mary
Say the Rosary every day.*

*Light a candle to Mary
Life will be gold not dross.
Light a candle to Mary
She will help you bear your cross.*

HOPFMANN BROS., INC.

CLINTON

GANS SURPLUS TIRE CO.

TIRES SHIPPED EVERYWHERE

Cable Address: GANSURCO

SELLING TIRES ALL OVER THE WORLD FOR 35 YEARS

1003 BROADWAY

CHELSEA, MASS.

Phones: CHelsea 3-2035 - 6 3-2078 3-3974



For Better LAUNDERING CLEANING

Call



TWinoaks 7-7253

Greetings
and
Best Wishes

from

A Good Neighbor
67 - 67a Great Road

Lund

AGRICULTURAL KNIVES



COMPLIMENTS
OF
LUND
PRODUCTS,
INC.

LIGHT A CANDLE TO MARY:

*Light a candle to Mary
Stay under her mantle of blue.
Light a candle to Mary
Remember Christ gave her to you.*

*Light a candle to Mary
To her example ever be true.
Light a candle to Mary
She will beg God's Mercy for you.*

GOLD CAST DENTAL LABORATORY

Specializing in OCCLUSAL REHABILITATION

INLAY • VENEER CROWNS • FIXED BRIDGES

ROBERT E. O'NEIL

NATICK, MASSACHUSETTS

FLERRA'S APPLE STORAGE

SPRUCE STREET, WEST ACTON

Telephone COlonial 3-4735



PLEASANT CAFE

ARE YOU AN ICEBERG OR A FLAME?

Our Divine Lord, expressing the purpose of His visitation to earth, said: "It is fire that I have come to spread over the earth, and what better wish can I have than that it should be kindled." When He sent His Spirit on the Church it appeared as "tongues of fire." Fire is a symbol of a quick, triumphant energy which transforms us into His likeness. This fire of God, if it falls on us, burns our coldness, makes us glow with enthusiasm, making the Creed a living power, the Sacraments a reservoir of apostolate, and our lives a flame of earnest consecration. We are to be set on fire for love of God and the Church as fire turns the wettest and coldest day into flame! But are we on fire? Do we so love the Church that we bring others to her sweet embrace? Do we so love the Vicar of Christ that we fill His outstretched hands with orphanages, leprosaria, schools and seminaries for the Japanese, Burmese, Indians and Americans for whom Our Saviour died?

Frankly, we are icebergs compared to what we ought to be. Is our faith a flame or is it an icicle? Shall we forget the warning of God: "Thou art neither hot nor cold, therefore will I vomit Thee from My Mouth."

Bishop Sheen

WHAT IS A COOPERATIVE BANK

SERIAL SHARE

One Serial Share • ONE DOLLAR PER MONTH • Every Month

What is a Serial Share?

Just a plain ordinary month by month saving on a systematic plan — A regular habit — where your money earns and earns — grows and grows.

How much does my money earn?

Present dividends are paid at the rate of 4% yearly — compounded every 3 months — so that your dollar actually earns more than 4% yearly.

Is my money safe?

For seventy-five years no one has ever lost a dollar through Co-operative Bank Saving — in fact, your dollars are insured in full under Massachusetts Banking Laws.

How much money can I save?

Remember, one Serial Share is one dollar per month, every month — but you can buy from 1 to 80 Serial Shares — just what you decide you want to save every month. Don't start too high and don't start too low.

Can I take my money out if I need it?

Yes, under ordinary conditions in five minutes, just bring your Book to the Bank.

When do I start saving?

Today or any day — Choose the savings plan that best fits you — then come in and ask all the questions you like, but do it today.

SAVE TODAY WITH SAFETY FOR TOMORROW

CONCORD CO-OPERATIVE BANK

31 WALDEN STREET

CONCORD, MASS.

Telephone EMerson 9-2400

BEST WISHES FOR A HAPPY HOLIDAY!



MAPLECREST DAIRY

7 BENT AVENUE

MAYNARD

LIGHT A CANDLE TO MARY:

*Light a candle to Mary
To her dedicate your soul.
Light a candle to Mary
Strive always to play your role.*

*Light a candle to Mary
She is your mother most dear.
Light a candle to Mary
She will dry every sinner's tears.*

Telephone TWinoaks { 7-2293
 { 7-8711

MAYNARD SUPPLY COMPANY

Heating
Plumbing
Power Burners

SUPPLIES

Paint
Hardware
Electrical

99 MAIN STREET

MAYNARD

MASSACHUSETTS

Radiator Repair

Body Repair and Painting

Glass Installed

Brake Work

CENTRAL AUTO BODY

Complete Auto Service

Pick-up and Delivery

EUCLID AVE. — NEXT TO CO-OP COALYARD

MAYNARD, MASSACHUSETTS

LEN RYAN

SAM SARVELA

Telephone TWinoaks 7-2674



Greetings

Barber Chevrolet, Inc.



5 Acton Street

Telephone TW 7-8181

Maynard, Massachusetts



GOD'S CANDLE

*You're just God's candle burning out
And you must burn and not complain
Till God in His good time blows out the flame.
We're all God's candles —
And some burn just a little while
And then are done.*

*And others they burn longer and
There are some
That burn until the end.
And you are one.
God knows why —
But to me it seems
That those whom God allows to burn unto the end
And give the very last they have to Him
Are those whom God loves most.
But anyway —
You're just God's candle burning out.
And you must burn and not complain
Till God in His good time blows out the flame.*

Catholic Knights of America Bulletin
St. Louis, Mo.

WESTFORD AUTO PARTS

New and Used Parts
Used Cars and Trucks Bought and Sold

DAN SHEA, Proprietor

Telephone MYrtle 2-8600

ROUTE 110

WESTFORD, MASS.



LIGHT A CANDLE TO MARY:

*Light a candle to Mary
Her name will dispel all gloom.
Light a candle to Mary
You may be meeting her soon.*

*Light a candle to Mary
For our sins her Son atoned.
Light a candle to Mary
She will never leave you alone.*



JERRY'S PACKAGE STORE

48 MAIN STREET
MAYNARD, MASSACHUSETTS

TWinoaks 7-2041



FOWLER FUNERAL SERVICE

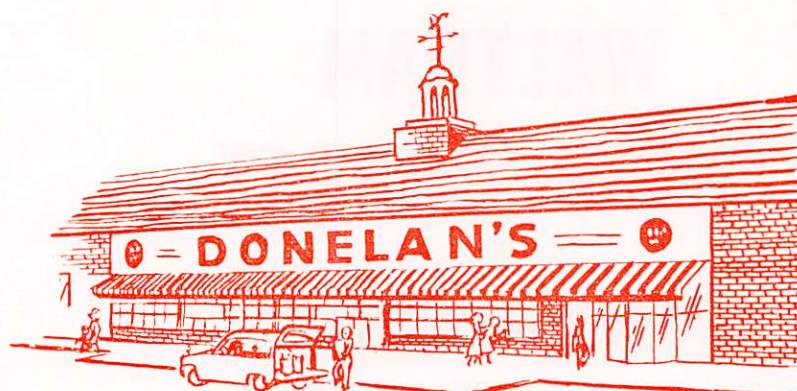
PRIVATE AMBULANCE

42 CONCORD STREET
MAYNARD, MASSACHUSETTS

Telephone: TWinoaks 7-7343

MR. JOHN A. KENNEDY
Director

WHERE OLD-FASHIONED FRIENDLINESS
MEETS MODERN CONVENIENCES
BETTER FOOD FOR BETTER LIVING



WHERE
SHOPPING is a PLEASURE

WITH
SAFE, EASY, COMFORTABLE PARKING
IN ALL KINDS OF WEATHER

SOFT MELODIC MUSIC
WIDE ROOMY AISLES
LARGE SELECTION AND VARIETY
EFFICIENT CHECKOUT SYSTEM
PARCEL PICK-UP STATION
BUNDLES PLACED IN YOUR CAR

STORE HOURS

Monday	9 A. M. to 6 P. M.
Tuesday	9 A. M. to 6 P. M.
Wednesday	9 A. M. to 9 P. M.
Thursday	9 A. M. to 9 P. M.
Friday	9 A. M. to 9 P. M.
Saturday	9 A. M. to 6 P. M.
Sunday	— See you in church

**PLUS! DONELAN'S EVERED'S
GREEN TRADING STAMPS**



LIGHT A CANDLE TO MARY:

Light a candle to Mary
The ever Immaculate One.
Light a candle to Mary
Through her graces and blessings come.

Light a candle to Mary
And when you journey home,
The candles you lit for Mary
Will guide you to God's throne.
LIGHT A CANDLE TO MARY!



WALTHAM SUPER MARKET

836 MAIN STREET
WALTHAM

KEEPER OF LIGHTS

*Let it not be that I denied
Thee either by silence or consent,
Or that one lovely impulse died
For lack of light and nourishment.*

*For I have often seemed to be
A child by fiercer forces bent
My candle of integrity
Keeper of lights, shield now for me.*



Stretch's Tavern

Happy Christmas to All!

Ask for . . .

ROUNSEVELL'S

MAPLE LEAF



FRANKFORTS

and all other

Maple Leaf
BRAND
MEAT PRODUCTS

My Christmas Pledge

I promise

1. to make my Christmas a holy day with Christ—not a holiday without Him.
2. to observe Christmas as the birthday of Christ—not merely as a day to give and receive merchandise.
3. to remember that the real symbols of Christmas are the Star, the Stable and the Crib—not Santa Claus and his reindeer.
4. to teach my children that "Santa Claus" is the nickname of St. Nicholas, who gave to the poor in honor of Christ.
5. to help one poor family, in honor of Jesus, Mary and Joseph, the Holy Family of Bethlehem.
6. to send Christmas cards remindful of Him, the Infant Savior—not decorated only with candy canes, dogs, ribbons and wreaths.
7. to make room in my home for Him, Who found no room at the inn, with a Christmas Crib to remind me that He was born in a stable.
8. during this season, in a special way, to honor Mary, His mother, who kept the first Christmas vigil beside the manger.
9. to begin this day by leading my family to His table to receive the Bread of Life.
10. on this and every day, to give "Glory to God in the highest," and to work and pray for "Peace on earth to men of good will."

UNITED CO-OP SOCIETY

Better Service for More People

MAYNARD

SUPER MARKET

BAKERY

DAIRY



GASOLINE STATION

APPLIANCES

MOBIL FUEL OIL

CO-OP

A New Way To End Shopping Worries — SHOP AT THE CO-OP

56 - 68 Main Street, Maynard

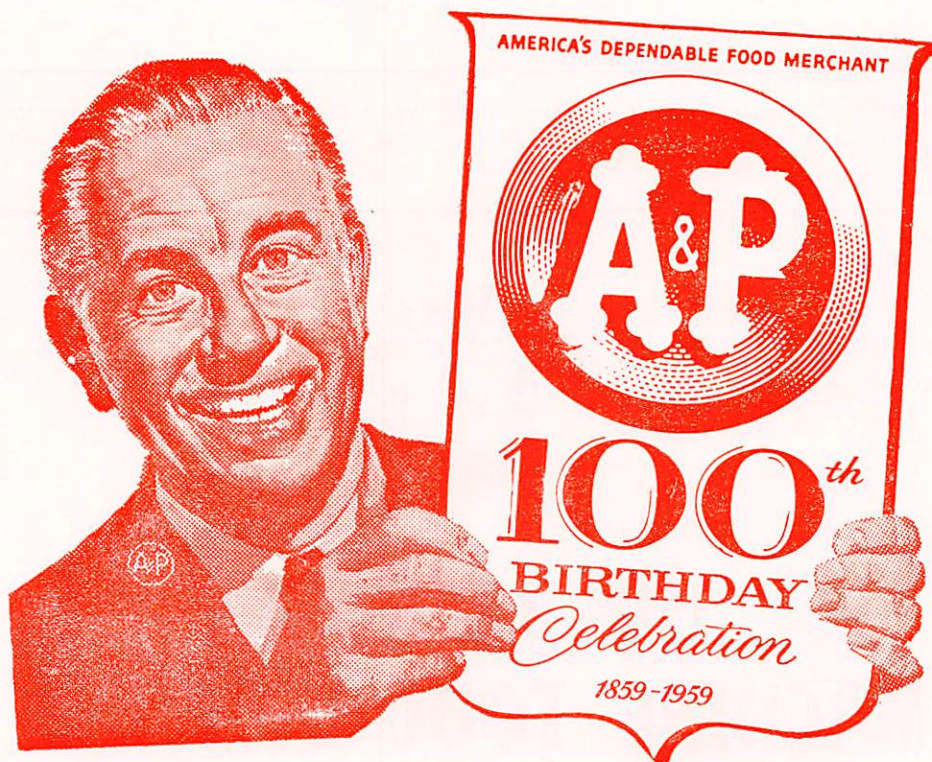
ADVENT PRAYER:

AROUSE YOUR POWER AND COME,
O LORD, WE PRAY,
THAT, FROM THE THREATENING PERILS OF OUR SINS,
WITH YOU TO PROTECT US, WE MAY BE RESCUED,
WITH YOU TO FREE US, WE MAY BE SAVED.



Dennison Manufacturing Co.

*"Thanks,
America"*





WARREN A. TWOMBLY FUNERAL HOME

For the Care and Last Rites of Your Loved Ones

42 - 44 SUMMER STREET

MAYNARD

Telephone TWinoaks 7-8501

A Happy and Blessed Christmas To All! True to our Polish Custom we share with you the traditional Christmas Wafer wishing you an abundance of graces from the Christ Child for Christmas and the coming New Year 1960.



THE LAPOINTE MACHINE TOOL COMPANY

BROACHING MACHINES AND TOOLS

HUDSON

MASSACHUSETTS

JOSEPH P. GIRDZIEWSKI

SPECIAL AGENT

NEW YORK LIFE INSURANCE COMPANY

Office HUBbard 2-4900
75 FEDERAL STREET
BOSTON, MASS.

Residence TWinoaks 7-2386
34 THOMPSON STREET
MAYNARD, MASS.

LIFE INSURANCE — ACCIDENT and SICKNESS INSURANCE
MORTGAGE INSURANCE — GROUP INSURANCE

The Story of the Christmas Tree

by Fr. Francis X. Weiser, S. J.

In a family of my acquaintance the nine-year-old boy came home one day before Christmas from his classes and told his mother with great conviction: "Teacher said we should not have a Christmas tree. It is a pagan custom. They called it Yule tree in the old times, and it has nothing to do with the birthday of Our Lord."

The good mother did not know what to answer. She felt she should not contradict the authority of the school teacher; besides, she was not sure whether the teacher was right in her statement. Is the Christmas tree really a pagan custom? Has it no meaning connected with the great feast of the Nativity of Christ?

Actually, the teacher made a regrettable mistake. She probably took some "explanation" she had read in a popular magazine or book as pure historical truth, and on that basis proceeded to "enlighten" the children, thereby robbing them of the delight and thrill over the Christmas tree in their homes. If she had known the true history of the tree she would have talked very differently to her children in class.

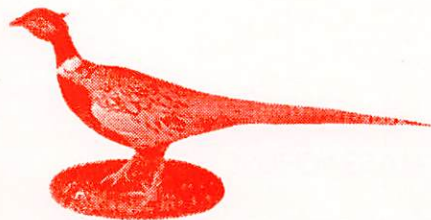
So we give here the story of the Christmas tree for you, dear parents (and perhaps for some teachers as well), that you may be able to explain this charming Christmas symbol to your little ones. It is the true and real explanation, and I hope it will give both you and your children a wealth of joy, consolation, and true Christmas devotion.

(THIS SPACE FURNISHED THROUGH THE COURTESY OF FRIENDS)

— N. S. — F. M. — T. B. — E. G. —

Fish - Birds - Animals

TWinoaks 7-7665



STANLEY J. KODZIS

TAXIDERMIST

ALL KINDS OF TAXIDERMY DONE

1 KING STREET

MAYNARD, MASS.

Custom Made Deer Skin Products

MARTIN & DORAN FUNERAL HOME

JOHN A. DORAN • HERBERT W. MARTIN

Embalmers and Directors

12 LINCOLN STREET

MAYNARD

MASSACHUSETTS

TWinoaks 7-2310 and 7-2410

Christmas at St. Casimir's

December 24 — The Vigil of Christmas

Confessions at 3 P. M. and 7 P. M.

December 25 — Christmas Day

Masses coram Sanctissimo at Midnight, 9 A. M. and 11 A. M.



TOM KING'S PACKAGE STORE, INC.

Chester Lech, Proprietor

121 MAIN STREET

MAYNARD

MASSACHUSETTS

Telephone TWinoaks 7-9865

THE YULE TREE

Our pre-Christian ancestors had Yule Trees in ancient times, but these had nothing to do with the Christmas Tree. Yule Trees were not really "pagan" in their meaning, but belonged to the group of nature symbols which humanity always cherished. These trees were put up at Yule time (December) as a token and assurance that nature was not entirely dead under the ice and snow of winter, that spring would come again. The little evergreens proclaimed this assurance by the fact that they bravely stayed alive when every other plant in nature had "died." However, the Yule Trees never had any lights or decorations.

What then is the origin of the Christmas Tree? It started quite late, only about three hundred years ago. It is completely Catholic in origin, and its existence was inspired entirely by religious and liturgical symbols.

THE PARADISE TREE

From the eleventh century on, religious plays used to be performed in Churches, or in the open in front of Churches. One of the most popular of these "mystery" plays was the one called "Paradise." It enacted the creation of man, the sin of Adam and Eve, and their expulsion from Paradise. Because this play closed with a consoling promise of the coming Savior and His Incarnation, it was a favorite pageant in Advent. The Garden of Eden was indicated by a fir tree hung with apples, from which Eve broke the fruit and gave it to Adam to eat. This "Paradise Tree" attracted the attention of all.

During the fifteenth and sixteenth centuries the mystery plays were gradually forbidden by bishops in all countries because abuses had crept in, like irreverence in acting, clowning of certain parts, and so on. But then the people started to put up the Paradise Tree in their homes. This happened on one day of the year, the feast day of Adam and Eve, December 24.

THE CHRISTMAS LIGHT

On December 24 also, another custom was practiced from ancient times in all Catholic countries. It was "Christmas Light," a symbol of our Lord, the "Light of the World" that started shining at Bethlehem. In Germany, there was not just one candle but many, which were placed on a wooden structure made in the form of a pyramid, adorned with glass balls and tinsel. It was called the "Christmas Pyramid." On its top was the "Star of Bethlehem" and the Christmas crib stood at the foot of the pyramid.

START OF THE CHRISTMAS TREE

In the sixteenth century the people of Western Germany began to combine the two symbols they had in their homes on December 24. So they took the glass balls and tinsel from the wooden pyramid and put them on the Paradise Tree. The "Star of Bethlehem" was transferred to the top of the tree, the crib was put under the tree and the candles were changed from the pyramid to the tree. And since the apples represented the fruit of sin in paradise, the faithful wanted to show their children that the Tree, bearing the Light of Christ, had now become a "Tree of Life." So they put sweet things, cookies, candies, beside the "apples of sin" — to indicate the sweet fruit of Our Lord's Redemption. Thus the Christmas Tree originated. Every detail breathes a true religious significance, Catholic, deeply devotional, filled with the religious symbolism of the Nativity.

The Christmas Tree arrived in America toward the middle of the last century, as the cherished companion of German immigrants. It came to the attention of neighbors and gradually conquered the hearts of the American people. Today the Christmas Tree is one of the main features of our American Christmas celebration in the home, not only among Catholics but among all Christians.

(THIS PAGE FURNISHED THROUGH THE COURTESY OF
A. DA PRATO COMPANY OF BOSTON)

DR. THOMAS W. GRIFFIN

CONCORD MEDICAL CENTER

CONCORD

MASSACHUSETTS

Compliments and Best Wishes from

CONGRESSMAN PHILIP E. PHILBIN

Third Congressional District

Compliments of

THE MAYNARD BOARD OF SELECTMEN

E. F. RYAN, M. D.

STOP! READ! THINK! — Heard on Dave Garroway's Program "TODAY" . . .

Statistics culled at a certain High School, U. S. A. reveal the following:

Among "A" students percentage of car owners — 0 .

Among "B" students percentage of car owners — 5%.

Among "C" students percentage of car owners — 45%.

Among "D" students percentage of car owners — 71%.

C. H. DUSTON, M. D.

FRANCIS A. D'AMBROSIO, M. D.

DONALD O. FELTUS, O. D.

Optometrist

28 NASON STREET, MAYNARD, MASSACHUSETTS

DR. JAMES E. WALSH

Dentist

Greetings
and
Best Wishes

from

Good Neighbors

PILLOWS RENOVATED

SHIRT SERVICE

John's
Same Day Service

DRY CLEANING BY
MODERN PURIFIED
RINSE METHOD

CLEAN 'EM YOURSELF
RUGS, TILE, UPHOLSTERY
RENTAL SERVICE

127 Main Street

MAYNARD, MASS.

TWinoaks 7-7851

PITFALLS OF PARENTS — How often you hear thoughtless parents say: "When we were young, we had it hard. But that's not going to happen to our sons and daughters. We'll make sure they have it easier than we did." A soft life produces a marshmallow man — no backbone, no determination, no ability to overcome difficulties. Temptations are difficult to defeat. Success in science, business, religion or any profession costs sacrifice, setbacks and sweat. Parents who wisely put their children through a stiff test-run will find them ready to win the race of life later on. No troubles, no triumph! No test, no conquest!

Powder Mill **MANUFACTURING CO. INC.**
SCREW MACHINE PRODUCTS • ELECTRONIC COMPONENTS
POWDER MILL ROAD • MAYNARD, MASSACHUSETTS

TWinoaks 7-7052

Sales and Service



Cars and Trucks

ANDERSON FORD SALES

TWinoaks 7-7000 or 7-7171

6½ GLENDALE STREET

MAYNARD, MASSACHUSETTS

USED CAR LOT — 4 MAIN STREET

BUYING OR SELLING REAL ESTATE?

THE WAYSIDE REALTORS

POST ROAD — ROUTE 20 — SUDBURY

"Next to Sudbury Inn"

HIlltop 3-8831

OLympic 3-4921

MEDICAL CENTER PHARMACY

HOSPITAL and SURGICAL SUPPLIES

CONCORD MEDICAL CENTER

CONCORD

MASSACHUSETTS

EMerson 9-5120

PITFALLS OF PARENTS: SELECTING A SCHOOL — Said a mother: "My daughter has been graduated from the eighth grade. Now she's old enough to choose her own high school." That's false. When we are young we don't know what's good for us. Too frequently a school is selected because a girl friend or boy friend is going there or merely because of its athletic or social program. School is primarily for studying, for our mental and moral formation. Parents have the duty of helping youth to select the proper school and the most suitable, not the easiest, courses.

ARTHUR'S JEWELRY

79 MAIN STREET, MAYNARD, MASSACHUSETTS

Jewelry — Gifts — Diamonds

AVALON CLUB

RAY CUMMISKEY

BUILDER and CONTRACTOR

Remodeling

86 OLD MARLBORO ROAD

MAYNARD

TWinoaks 7-7036

FLINT *Pharmacy*

SOUTH ACTON

MASSACHUSETTS

WALDO J. FLINT, Reg. Pharm.

COLonial 3-4922

PITFALLS OF PARENTS — One of the most disastrous R's that is shattering our school system is "riding." If boys and girls must have a car in order to attend high school, that is all right. However, some boys and girls are riding themselves out of an education. Popularity for sons is being bought by parents at a high price. The boy in high school who picks up his girl friend at noon, then after school again, and is frequently parked with her in the evening, will wreck his schooling and his soul.

MARLBOROUGH COUNTRY CLUB

MARLBOROUGH, MASS.

Just off the Post Road

HUnter 5-1660

Mgr. Peter Tessier

Call TWinbrook 7-7686

THOMAS A. COCCO

ALL FORMS OF INSURANCE

"We specialize in un-insurable people"

HOME OWNERS — LIABILITY

FIRE — AUTO

MARINE CASUALTY

J. FRANCIS CLEARY

INSURANCE

17 SUMMER STREET

MAYNARD

MASSACHUSETTS

Telephone TWinoaks 7-2395

FRANK J. PAZARICKY

MASTER ELECTRICIAN

Residential - Industrial - Commercial

Appliance Installation

FULLY INSURED

17 PARK STREET

MAYNARD

TWinoaks 7-2608

PITFALLS OF PARENTS — The radio or TV master of ceremonies asks a pre-school child: "Are you a flirt? Do you have a girl friend? Are you going to buy her a box of candy for her birthday?" Cute? Not at all. That's criminal. Why don't we adults allow children to be children and grow up normally and gradually? Why rob them of those young carefree days? We graduate tots from kindergarten, take them to adult entertainment, sponsor mixed dancing classes and parties for sixth, seventh and eighth graders. Then we expect them to remain children. Teach children dancing too early and they will date too early. Boys and girls will get together in due time on their own. We don't have to push them together in grade school by sponsoring affairs that are for older boys and girls.

PHOENIX SPRING BEVERAGE CO.

Established 1918

Wholesale Dealers
BEERS AND WINES

Manufacturers
QUALITY BEVERAGES

SHIRLEY

MASSACHUSETTS

Phones 2311 - 468

A. C. FLAGG & SON

FOR MEN

Selected Clothing and Furnishings

FOR LADIES

Outstanding Sportswear

Special Representative

of

LONDON HARNESS COMPANY

MURPHY & MURPHY
DRIVE-IN REAL ESTATE INC.
ROUTE 20 — POST ROAD, SUDBURY

Serving
Maynard Hudson Marlboro
and Vicinity

HI lltop 3-8857

For Action and Satisfaction

Tel. HU 5-1039

A. J. VALCHUIS
Floral Designs
FLOWERS FOR ALL OCCASIONS

547 BOSTON POST ROAD MARLBORO, MASS.

BE THANKFUL — Be thankful for the troubles of your job, they provide about half your income. Because if it were not for the things that go wrong and the difficult people you have to deal with, someone could be found to handle your job for half what you are being paid.

STOW ACRES COUNTRY CLUB INC.

Located on Routes 117 and 62

Tel. Hudson 5661

We Welcome Outings, Wedding Parties, Etc.

OPEN ALL YEAR ROUND

RAY'S BARN

NATICK, MASS.

Junction of Routes 9 and 27

FINE FABRICS

LOW PRICES

Have a Steak at

SUOMI

JOHN SOKOLOWSKI

FASHION SHOP

85 MAIN STREET

MAYNARD, MASSACHUSETTS

MAKE BELIEVE — Some people have lived so long in a world of make believe that eventually they think everything is make believe — even their soul and eternal judgment and heaven and hell and God. What a tragic self-deception! What a lamentable blindness and deafness to all the evidence furnished by cold, human reason and Divine Revelation!

SUNDO'S BARBER SHOP

TWO FRIENDS



LAWRENCE TURKEY FARM
STOW, MASS.

TWinoaks 7-2332

Treat Your Family and Friends to a real old-fashioned Farm Fresh Turkey this year. These are Grade A capon-type, prize-winning Lawrence Turkey Farm Turkeys. Raised on a scientific diet of special feeds.

Order 1 to a 1000.

OVERHEARD IN OUR CAFETERIA RECENTLY — "Gee, I'd better get back to the office or I'll be late for quitting time."

CRestview 4-6500

SINCE 1880

BEDFORD FARMS

Dairy Products

J. B. PRESCOTT CO., BEDFORD, MASS.

GACEK FUNERAL HOME

Francis M. Gacek

612 BRIDGE STREET

LOWELL

MASSACHUSETTS

GLenview 5-5971

CENTRAL TAILORING COMPANY

407 BOSTON POST ROAD

WESTON,

MASSACHUSETTS

TWinoaks 4-1888

Tel. TW 7-8141

MR. and MRS. CONRAD MAYBERRY

Real Estate Brokers

43 GREAT ROAD

MAYNARD, MASS.

Be careful about calling yourself an expert. After all, an "ex" is a has been, and a "spurt" is a drip under pressure.

ELI H. GORDON

Optometrist

MEDICAL CENTER

Concord, Mass.

EM 9-9032

Boston, Mass.

HU 2-2258

MARLBORO, MASS.

Ray Savage

BEST WISHES FOR YOUR BAZAAR

It Will Pay You To Drive To
TOWNSEND FORD — Townsend, Mass.

also

PALMER FORD — Palmer, Mass.

Ford Cars and Trucks

and Fabulous TRIUMPH TR-3

Townsend 555

Palmer AT 3-3406

TELEPHONE
TWinoaks 7-2498

RUG BINDING
and REPAIR

WHEELER'S

Rug and Upholstery Cleaners
WALL TO WALL CARPET CLEANING

115 WALTHAM STREET

MAYNARD

MASSACHUSETTS

A SMALL TOWN — A small town is one where you can't find any place to do anything you shouldn't.

CARTER FURNITURE CO., INC.

348 MAIN STREET

WEST CONCORD

MASSACHUSETTS

EMerson 9-4030

CANNELLA MOTORS, INC.

9 POWDER MILL ROAD

MAYNARD

Phone: TWinoaks 7-8064

GEORGE R. McGOVERN

Cattle Dealer

MAIN STREET

DUNSTABLE, MASS.

Nlagara 9-3121

The Supermarket that has Everything in Food

BACHRACH'S SUPER MARKET

52 NASON STREET

MAYNARD

Bachrach's — Sell the Best Meat Sold Anywhere

EVICTION — Every time I look at me — I seem to see only me in me. Please, Lord, kick me out of me so that you may find some room for you in me.

HI lltop 3-8881

SUDBURY INN

POST ROAD - ROUTE 20

SOUTH SUDBURY

MASS.

Banquets - Weddings

ENTERTAINMENT NIGHTLY

ED OLSEN BAND

Friday - Saturday - Sunday — 8 - 12 P. M.

THE FABULOUS NIGHTWINDS

Monday thru Saturday — 8 - 12 P. M.

MODERN MFG. INC.

of Worcester

DR. JOSEPH F. SAMPSON

Chiropodist

28 NASON STREET
ROOM 2

MAYNARD, MASS.
CASE BUILDING

Professional Foot Treatment

Office Open: Tuesday, 2 - 6; Saturday, 1 - 6 P. M.

Appointment — TWinoaks 7-7082

SANDERSON'S

GREETING CARDS • STATIONERY • BOOKS
BUXTON WALLETS • TOYS

Large Selection of Christmas Cards

MAYNARD

TWinoaks 7-2761

LOUISE WEBSTER, Proprietor

THE SINNERS' CLUB — No meetings — no officers — no dues! Just a daily prayer: "O God, be merciful to me, a sinner."

SAN-VEL CONCRETE CORPORATION

LITTLETON, MASSACHUSETTS

HUnter 6-3501

CApital 7-9898

AVIS INTERNATIONAL

37 NASON STREET
MAYNARD

TWinoaks 7-7561

R. SALAMONE & SONS

SELF SERVICE

Distributors of Famous Beers and Wines

Groceries and Provisions

Fresh Fruit and Vegetables in Season

We carry a complete line of Italian Food

FOR FREE DELIVERY CALL MAYNARD

TWinoaks 7-7362

MAYNARD INDUSTRIES, INC.

*WISDOM is knowing what to do,
SKILL is knowing how to do it,
and VIRTUE is doing it well.*

WRIGHT-BERNDT, INC.

Ford Sales - Service

LITTLETON

HUnter 6-3600

MRS. RANGHILD M. NELSON

Real Estate Broker and Tax Accountant

28 NASON STREET

MAYNARD

MASSACHUSETTS

TWinoaks 7-7202 anytime

MAYNARD OIL COMPANY

RANGE & FUEL OILS

241 MAIN STREET

MAYNARD

TWinoaks 7-7641

ASSABET OIL COMPANY

65 ACTON STREET

MAYNARD

TWinoaks 7-7712

Free Estimates

Telephone TWinoaks 7-2669

HENRY AUGUSTYNIAK

Hardwood Floors

Laying • Sanding • Refinishing

All New Equipment

42 SUDBURY STREET

MAYNARD

MASSACHUSETTS

vs. COMMUNISM — Communism is more than an economic, political, social, or philosophical doctrine. It is a way of life; a false, materialistic "religion." It would strip man of his belief in God, his heritage of freedom, his trust in love, justice, and mercy. Under Communism, all would become, as so many already have, 20th Century slaves.

BOSTON FURNITURE COMPANY

Established since 1907

STORE OF QUALITY FURNITURE

Heywood-Wakefield • Drexel

Sealy Bedding

WOOD SQUARE

HUDSON

NASON STREET SPA

58 NASON STREET

MAYNARD

Borden's Ice Cream

Sandwiches — Coffee

Telephone TWinoaks 7-9888

WATTS RADIO AND T.V. SERVICE

Black and White and Color

SCHOOL STREET

SOUTH ACTON

COlonial 3-7327

Bearl's

Home of Fine Sportswear and Shoes
for

Pre-Teens and Misses

NASON STREET

MAYNARD

MASSACHUSETTS

vs. COMMUNISM — Communists want to control everything: where you live, where you work, what you may not and must read and write, how your children are educated. The most minute details are subjects for state supervision. They want to make a "communist man," a mechanical puppet. This is the ultimate, and tragic, aim of Communism.

ANDREOLI, INC.

Wholesale Tobacco and Candy

LOWELL

SEDER & RICHMOND

Lawn and Garden Supplies Plaster and Mason Supplies

Fertilizer and Seed

Chimney, Fireplace Supplies

Flooring - Doors - Windows - Roofing

Lime - Cement - Insulation

Paint - Builders' Hardware

NASON STREET

Telephone TWinoaks 7-7332

FOR EXPERT HAIR CUTTING

go to

TARNY'S
BARBER SHOP

6 WALTHAM STREET
MAYNARD

BUTLER LUMBER CO.

67 PARKER STREET

TWinoaks 7-7271

vs. COMMUNISM — The doctrines of Communism threaten the happiness of the community, the safety of every individual, and the continuance of every home and fireside. They would destroy the peace of the Country and thrust it into a condition of anarchy and lawlessness and immorality that passes imagination.

— Herbert Hoover

Invisible Half-Soling

Auto-Soler Heels

V. KANGAS — SHOE SERVICE

Zippers Fixed and Replaced
Shoes Dyed and Shined

55 NASON STREET

MAYNARD, MASS.

DOUG LANGILLE

Real Estate

MARLBORO 1180

D. FRANCIS MURPHY

INSURANCE

11 POPE STREET

HUDSON

Tel. Hudson 63-W

Telephone TWinoaks 7-8442

GATELY'S SERVICE STATION

USED CARS

Tires, Batteries, Accessories, Lubrication

151 MAIN STREET

MAYNARD

MASSACHUSETTS

vs. COMMUNISM — Do not fool yourselves. Communism is most dangerous. There are thousands of Communist agents even in our own Land, even at this very time, who are fanatically and shrewdly working and scheming to overthrow our way of life. Please God, it will not happen — but, unless we fight Communism with all our power, IT COULD happen here. As an aid for all, we offer the following set of "Nine Commandments," as prepared by His Eminence Richard Cardinal Cushing.

F. J. KANE & SONS

"REDIMIX" CONCRETE

Heated for Winter Delivery
Washed Sand • Crushed Gravel

560 MAIN STREET

HUDSON

MASSACHUSETTS

Call Hudson 1339

DR. ALBERT M. MILLER

Dentist

38 MAIN STREET

HUDSON

MASSACHUSETTS

Telephone 1362

BURSAW GAS & OIL COMPANY, INC.

EAST ACTON

Colonial 3-4796

PRESCOTT'S DECORATING SERVICE

AND

PRESCOTT PAINT CO.

*If Communism is the greatest threat today to our lives, our property and way of life, what can we do about it?
What can you do about Communism?*

R. & I. LAUNDROMAT

94 MAIN STREET

MAYNARD

MASSACHUSETTS

Tel. MAYNARD TWinoaks 7-2324

W. F. OSBECK

PLUMBING AND HEATING CONTRACTOR

10 SUMMER STREET

MAYNARD

MASSACHUSETTS

CASSIDY'S LOBSTER HAVEN

Lobster - Steaks

Cocktails

ROUTE 20 — WAYLAND, MASS.

CROWN
CONTAINER CORP.

Corrugated and Fibreboard Products

MAIN STREET

MAYNARD

MASSACHUSETTS

*vs. COMMUNISM — In the first place, know something about what Communism really is, for we cannot
defeat Communism unless we know what it is.*

RED DOOR

DANCING AND FLOOR SHOW

Friday and Saturday Night

American and Chinese Foods

Full Line of Liquors and Beer

MAIN STREET

MAYNARD

Telephone TWinoaks 7-9877

E. F. LAURENCE & COMPANY

Candle Manufacturers

NORTHBOROUGH, MASSACHUSETTS

LISTING OF CONTRIBUTORS AT ST. CASIMIR'S	SPECIAL COLLECTIONS FROM MAY 1958 TO MAY, 1959									
	Offering for Grand Annual Collection for 1959	Monthly Collection Total Offering	Seminary	Negro-Indian Missions	Immaculate Conception Shrine in Washington	Missions	Catholic University of America	Diocesan Charities	Peter's Pence	Bishops' War Relief
ALEKSANDROWICZ, Frank-Mary	10.00	12.00	1.00	1.00	1.00	1.00	1.00	1.00	1.00	1.00
ALGIERSKA, Victoria	6.00	12.00	1.00	1.00	1.00	1.00	1.00	1.00	1.00	1.00
ANDERSON, Blanche	6.00	—	—	—	—	—	—	—	—	—
ANDRUSZKIEWICZ, Mary	8.00	—	—	—	—	—	—	—	—	—
ANDRUSZKIEWICZ, Blanche	6.00	—	—	—	—	—	—	—	—	—
ANDRUSZKIEWICZ, Joseph-Helen	8.00	18.00	2.00	—	2.00	1.00	—	2.00	2.00	2.00
ANELONS, George-Eve	8.00	12.00	1.00	1.00	1.00	1.00	1.00	1.00	1.00	1.00
ARCISZ, Antoni-Mary	8.00	—	—	—	—	—	—	—	—	—
AUGUSTYNIAK, Harry-Amelia	10.00	12.00	1.00	1.00	1.00	1.00	1.00	1.00	1.00	1.00
BACHARSKA, Franciszka	8.00	12.00	1.00	1.00	1.00	1.00	—	—	—	—
BACHARSKI, Frank	6.00	12.00	.50	.50	.50	.50	.50	.50	.50	.50
BACHARSKA, Stella	—	12.00	1.00	1.00	1.00	1.00	—	—	—	—
BAJGOT, Anna	5.00	—	—	—	—	—	—	—	—	—
BAJGOT, Jan-Michalina	10.00	—	—	—	—	—	—	—	—	—
BAKANOWSKA, Jamina	6.00	6.00	—	—	—	1.00	—	.50	—	—
BALLARD, Leona	6.00	—	—	—	—	—	—	—	—	—
BALUC, Jan	—	—	—	—	—	—	—	—	—	—
BANDALEWICZ, John-Pauline	8.00	12.00	1.00	1.00	1.00	1.00	1.00	1.00	1.00	1.00
BARRY, Stella	—	—	—	—	—	—	—	—	—	—
BEFORD, Leonard-Helen	10.00	12.00	1.00	1.00	1.00	1.00	1.00	1.00	1.00	1.00
BELIDA, Peter-Verna	—	—	—	—	—	—	—	—	—	—
BERGGREN, Carl-Veronica	10.00	13.00	1.00	1.00	1.00	1.00	1.00	1.00	1.00	1.00
BIGUSIAK, Ben-Helen	8.00	24.00	1.00	1.00	1.00	1.00	1.00	1.00	1.00	1.00
BOLTRUKIEWICZ, Edward	6.00	12.00	—	—	—	—	—	—	—	—
BOLTRUKIEWICZ, Gabriel	6.00	—	—	—	—	—	—	—	—	—
BRAYDEN, George-Fannie	8.00	7.00	5.00	5.00	—	5.00	5.00	5.00	5.00	5.00
BUBNOWICZ, Anna	6.00	12.00	—	—	—	—	—	—	—	—
BUBNOWICZ, John-Bernadette	10.00	12.00	—	—	—	—	—	—	—	—
BUDREWICZ, Antoni-Ludwika	8.00	6.00	—	—	—	—	—	—	1.00	—
BUKLEREWICZ, Julian-Jean	—	—	—	—	—	—	—	—	—	—
BUSCEMI, Philip-Stella	8.00	6.00	1.00	—	—	—	—	—	—	—
BUTLER, Robert-Helen	8.00	1.00	—	—	—	—	—	—	—	—
CANNELLA, John-Sophie	6.00	12.00	1.00	1.00	1.00	1.00	1.00	1.00	1.00	1.00
CARLSON, Ann	6.00	14.00	—	—	—	—	—	—	—	—
CASE, Mary	7.00	—	—	—	—	—	—	—	—	—
CHODINICKI, Jan-Aniela	8.00	—	—	—	—	—	—	—	—	—
CHRISTIAN, Leon-Stella	10.00	24.00	5.00	5.00	5.00	5.00	5.00	5.00	5.00	5.00
CHYZUS, Adolf-Helen	8.00	12.00	1.00	1.00	1.00	1.00	1.00	1.00	1.00	1.00
COWLES, Albert-Malvina	10.00	24.00	5.00	5.00	5.00	5.00	5.00	5.00	5.00	5.00
DARGIEWICZ, Janina	6.00	12.00	1.00	1.00	1.00	1.00	1.00	1.00	1.00	1.00
DARGIEWICZ, Richard	6.00	12.00	1.00	1.00	1.00	1.00	1.00	1.00	1.00	1.00
DAWSON, Sophie	6.00	12.00	.50	.50	.50	.50	.50	.50	1.00	—
DEXTER, Harry-Elizabeth	8.00	12.00	1.00	1.00	1.00	1.00	1.00	1.00	1.00	1.00
DONAHUE, Charles-Madonna	10.00	24.00	2.00	2.00	2.00	2.00	2.00	2.00	2.00	2.00
DROZDOWSKI, Nicholas-Jeanne	8.00	24.00	2.00	2.00	2.00	2.00	2.00	2.00	2.00	2.00
DROZDOWSKI, Romuald-Alice	10.00	24.00	2.00	2.00	5.00	2.00	2.00	2.00	2.00	2.00
DUDZINSKI, Ludwik-Felicja	10.00	—	—	—	—	—	—	—	—	—

"Must I be giving again and again, forever?"
 "Oh no," said the Angel; his glance pierced me through,
 "Just give till the Master stops giving to you."

Compliments of

HELEN PHANEUF

MAYNARD ARMY AND NAVY STORE

12 NASON STREET

TWinoaks 7-2133

Men's Work and Sport Clothes
Shoes - Boots - Rainwear - Jackets

vs. COMMUNISM — Secondly, study American history and especially study about the freedoms which are a part of our American way of life. Don't take liberties for granted. Recognize the fact that these precious freedoms are lacking in the countries controlled by Communism.

MAYNARD DRUG, INC.

92 MAIN STREET

TWinoaks 7-8778

Complete Stock of Dependable Prescription Drugs

WE AIM TO PLEASE

PIZZA & SPAGHETTI HOUSE

38 NASON STREET

MAYNARD

MASSACHUSETTS

Telephone TWinoaks 7-9881

Prompt and Courteous Service

MARTY'S TAXI

Telephone TWinoaks 7-7131

Waiting Room
Chartered Bus Service

53 NASON STREET

MAYNARD, MASS.

TUTTO'S ALLEYS

LUNCHEONETTE

Alleys Reserved

1 - 11 Sundays

24 MAIN STREET

MAYNARD

Weekday Bowling — 3 strings 60¢ for H.S.

Telephone: TWinoaks 7-2441

vs. COMMUNISM — Third, be very careful about calling anyone a Communist unless you are sure of your facts. Many people are careless about this and sometimes label every one who disagrees with them as a Communist. This, of course, is wholly unfair, destroys reputations unjustly, and actually helps rather than hurts the Communist cause.

AUTO UPHOLSTERING CO.

Seat Covers and Upholstery

Free Estimates

MAIN STREET

MAYNARD

John Piecewicz, Proprietor

M. SHINDLER & SON

HUDSON, MASSACHUSETTS

Shoes - Rubbers - Sneakers

LISTING OF CONTRIBUTORS AT ST. CASIMIR'S	Offering for Grand Annual Collection for 1959	SPECIAL COLLECTIONS FROM MAY 1958 TO MAY, 1959								
		Monthly Collection Total Offering	Seminary	Negro-Indian Missions	Immaculate Conception Shrine in Washington	Missions	Catholic University of America	Diocesan Charities	Peter's Pence	Bishops' War Relief
DUDZINSKI, Maciej-Urszula	8.00	—	—	—	—	—	—	—	—	—
DYNEC, Albert-Anastazy	8.00	12.00	1.00	1.00	1.00	1.00	1.00	1.00	1.00	1.00
DZERKACZ, John-Jessie	8.00	24.00	1.00	1.00	1.00	1.00	1.00	1.00	1.00	1.00
DZERKACZ, John, Sr.	6.00	—	—	—	—	—	—	—	—	—
ENGELHARDT, Paul-Helene	10.00	24.00	1.00	—	—	—	—	—	—	—
FALCO, Joseph-Mary	10.00	12.00	1.00	1.00	1.00	1.00	1.00	1.00	1.00	1.00
FANEZ, Joseph	—	24.00	2.00	2.00	2.00	2.00	2.00	2.00	2.00	2.00
FRIGULLETTI, John-Adele	8.00	—	—	—	—	—	—	—	—	—
GALLAGHER, Edward-Victoria	8.00	12.00	1.00	1.00	1.00	1.00	1.00	1.00	1.00	1.00
GALLIS, Frank-Mary	8.00	12.00	1.00	1.00	1.00	1.00	1.00	1.00	1.00	1.00
GATELY, Edwin-Helen	8.00	12.00	1.00	1.00	1.00	1.00	1.00	1.00	1.00	1.00
GILLENEY, Helen	—	—	—	—	—	—	—	—	—	—
GIRDZIEJEWSKA, Helen	6.00	12.00	1.00	1.00	1.00	1.00	1.00	1.00	1.00	1.00
GIRDZIEJEWSKA, Jennie	6.00	12.00	1.00	1.00	1.00	1.00	1.00	1.00	1.00	1.00
GIRDZIEJEWSKA, Marya	6.00	12.00	1.00	1.00	1.00	1.00	1.00	1.00	1.00	1.00
GIRDZIEJEWSKI, Joseph-Arlene	8.00	12.00	1.00	1.00	1.00	1.00	1.00	1.00	1.00	1.00
GOGOLIN, Anna	—	—	—	—	—	—	—	—	—	—
GOGOLIN, Robert-Josephine	10.00	24.00	2.00	2.00	2.00	2.00	2.00	2.00	2.00	2.00
GRAFF, Helen	12.00	1.00	—	—	—	—	—	—	—	—
GRANT, Josephine	6.00	12.00	1.00	1.00	1.00	1.00	1.00	1.00	1.00	1.00
GRYNIEWSKI, Michal	6.00	—	—	—	—	—	—	—	—	—
GUDZINOWICZ, Ben-Helen	10.00	16.00	1.00	1.00	1.00	1.00	1.00	2.00	2.00	2.00
GUDZINOWICZ, Emilia	6.00	—	—	—	—	—	—	—	—	—
GUDZINOWICZ, Franciszka	6.00	—	—	—	—	—	—	—	—	—
HARASIMCZYK, Anna	6.00	—	—	—	—	—	—	—	—	—
HADJUK, Stanislaw-Camilla	8.00	—	—	—	—	—	—	—	—	—
HAJDUK, Edwin	6.00	—	—	—	—	—	—	—	—	—
HAJDUK, Stanley	6.00	12.00	—	—	—	—	—	—	—	—
HARRINGTON, George-Gladys	10.00	12.00	1.00	1.00	1.00	1.00	1.00	1.00	1.00	1.00
HOWE, Mary	—	12.00	1.00	1.00	1.00	1.00	1.00	1.00	1.00	1.00
IANNUZZO, Raymond-Barbara	8.00	—	—	—	—	—	—	—	—	—
JAKUBOWICZ, Zofia	—	—	—	—	—	—	—	—	—	—
JAKUSIK, Anastazy	6.00	—	—	—	—	—	—	—	—	—
JAKUSIK, Ben	6.00	12.00	1.00	1.00	1.00	1.00	1.00	1.00	1.00	1.00
JAKUSIK, Onufry-Helena	10.00	12.00	1.00	1.00	1.00	1.00	1.00	1.00	1.00	1.00
JAKUSIK, Stanley	6.00	12.00	1.00	1.00	1.00	1.00	1.00	1.00	1.00	1.00
JANCZEWSKI, Katarzyna	6.00	3.00	1.00	—	—	—	—	—	—	—
JANCZEWSKI, Stanley-Clara	8.00	10.00	—	1.00	1.00	—	1.00	1.00	1.00	1.00
JANULEWICZ, Wincenty-Stefania	8.00	12.00	1.00	1.00	1.00	1.00	1.00	1.00	1.00	1.00
JARMULOWICZ, Robert-Sally	8.00	12.00	1.00	1.00	1.00	1.00	1.00	1.00	1.00	1.00
JARMULOWICZ, Wincenty-Anna	8.00	12.00	1.00	1.00	1.00	1.00	1.00	1.00	1.00	1.00
JARMULOWICZ, Vincent, Jr.-Mary	8.00	2.00	—	—	—	—	—	1.00	1.00	—
JASIELONIS, John	6.00	12.00	1.00	1.00	1.00	1.00	1.00	1.00	1.00	1.00
JASIELONIS, Stanley-Olympia	8.00	2.00	—	—	—	—	—	—	—	—
JASIELONIS, Stanley, Jr.	6.00	—	—	—	—	—	—	—	—	—
JERSZYK, Saluta	6.00	—	—	—	—	—	—	—	—	—
JOHANSEN, Anna	6.00	6.00	—	—	—	—	—	—	—	—

"Must I be giving again and again, forever?"
 "Oh no," said the Angel; his glance pierced me through,
 "Just give till the Master stops giving to you."

"Before Buying or Selling a Home
Always Consult a Realtor"
HAROLD A. LEDGARD, REALTOR



39 MAIN STREET
MAYNARD MASSACHUSETTS

Telephones
TWinoaks 7-2781 — EMerson 9-3685

"Safety with Realtors"

CROWELL FARM POULTRY STORE

STOW, MASSACHUSETTS

Dressed Poultry — Fresh Eggs

Bar-B-Que Chickens

R. E. CROWELL & SONS

Delivers in Maynard

Fresh Hot Baked Pies

Telephone TWinoaks 7-7263

vs. COMMUNISM — Fourth, encourage religious observance in your community. Attend the church of your choice. Religion is the weapon feared most by the Communists.

TELEVISION SALES AND SERVICE

"CALL FRED"

FRED'S RADIO & TV SERVICE

TWinoaks 7-8432

51 MAIN STREET

MAYNARD

MASSACHUSETTS

JACOB'S MARKET

40 MAIN STREET

TWinoaks 7-7612

WASHINGTON ST. MOTORS, INC.

Oldsmobile — Sales and Service

152 WASHINGTON STREET

HUDSON

MASSACHUSETTS

Telephone 499-W

PUGSLEY'S RAVON STATION

ROAD SERVICE

COR. CONCORD and BROWN STREETS

MAYNARD

MASSACHUSETTS

TWinoaks 7-9845

vs. COMMUNISM — Fifth, be fair in your dealings with others and do all you can to see that justice is done at all times. Communist propaganda feeds upon the injustices occurring in non-Communist countries.

CHRISTIAN FLOOR CO.

FLOOR COVERINGS

and

SUPPLIES

ROUTE 62

AT MAYNARD - ACTON LINE

MIKE KASZKIEWICZ

Trash Removal • Hot-Topping

260 GREAT ROAD

LISTING OF CONTRIBUTORS AT ST. CASIMIR'S	SPECIAL COLLECTIONS FROM MAY 1958 TO MAY, 1959									
	Offering for Grand Annual Collection for 1959	Monthly Collection Total Offering	Seminary	Negro-Indian Missions	Immaculate Conception Shrine in Washington	Missions	Catholic University of America	Diocesan Charities	Peter's Pence	Bishops' War Relief
JURGA, Stanislaw (Hudson)	10.00	12.00	1.00	1.00	1.00	1.00	1.00	1.00	1.00	1.00
JURGIELEWICZ, Joseph-Valerie	8.00	12.00	1.00	1.00	1.00	1.00	1.00	1.00	1.00	1.00
JURGIELEWICZ, Marya	6.00	12.00	.50	.50	.50	.50	.50	.50	.50	.50
JURGIELEWICZ, Capt. Stanley-Irene	10.00	12.00	2.00	2.00	2.00	2.00	2.00	2.00	2.00	2.00
JURGIELEWICZ, Stanley-Stella	10.00	10.00	—	—	—	—	—	—	—	—
KAMESH, Frank-Blanche	8.00	12.00	1.00	1.00	1.00	1.00	1.00	1.00	1.00	1.00
KAMINSKI, Walter-Jennie	6.00	12.00	—	—	—	—	—	—	—	—
KANGAS, Irene	6.00	8.00	—	—	—	—	—	—	—	—
KARPEICHUK, Edward-Cecile	8.00	5.50	.50	.50	—	.50	.50	.50	.50	.50
KARPEICHUK, Konstanty-Marya	8.00	12.00	1.00	1.00	1.00	1.00	1.00	1.00	1.00	1.00
KARPEICHUK, Stanley	6.00	12.00	1.00	1.00	1.00	1.00	1.00	1.00	1.00	1.00
KASZKIEWICZ, Anastazy	6.00	—	—	—	—	—	—	—	—	—
KING, Richard-Mary	6.00	12.00	1.00	1.00	1.00	1.00	1.00	1.00	1.00	1.00
KITOWICZ, Antoni-Emilia	8.00	12.00	1.00	1.00	1.00	1.00	1.00	1.00	1.00	1.00
KITOWICZ, Edward-Ruth	8.00	12.00	—	1.00	1.00	—	1.00	1.00	1.00	1.00
KITOWICZ, Walter	6.00	—	—	—	—	—	—	—	—	—
KOCHNOWICZ, Eleanor	6.00	1.00	—	—	—	—	—	—	—	—
KOCHNOWICZ, Joseph-Lena	8.00	12.00	1.00	1.00	1.00	1.00	1.00	1.00	1.00	1.00
KODZIS, Stanley-Stella	8.00	12.00	1.00	1.00	1.00	1.00	1.00	1.00	1.00	1.00
KOLENDA, Joseph	10.00	—	—	—	—	—	—	—	—	—
KONSZEWICZ, Jan-Anna	8.00	12.00	—	—	—	—	—	—	—	—
KRYSIENIEL, Alfons-Helen	8.00	12.00	1.00	1.00	1.00	1.00	1.00	1.00	1.00	1.00
KRYSIENIEL, Anna	6.00	12.00	—	—	—	1.00	1.00	1.00	—	—
KRYSIENIEL, Veronica	6.00	12.00	1.00	1.00	1.00	1.00	1.00	1.00	1.00	1.00
KUGIMA, Joseph-Stella	—	11.00	1.00	1.00	1.00	1.00	1.00	1.00	—	—
KULEWICZ, Alex Jr.-Barbara	8.00	—	—	—	—	—	—	—	—	—
KULEWICZ, Alex-Mary	10.00	12.00	1.00	1.00	1.00	1.00	1.00	1.00	1.00	1.00
KULEWICZ, Feliks-Mary	10.00	12	1.00	1.00	1.00	1.00	1.00	1.00	1.00	1.00
KULIK, Jan-Emilia	10.00	—	—	—	—	—	—	—	—	—
KULIK, Jan-Vivian	10.00	12.00	1.00	1.00	1.00	1.00	1.00	1.00	1.00	1.00
KULIK, Marya	6.00	12.00	1.00	1.00	1.00	1.00	1.00	1.00	1.00	1.00
KULIK, Stanley	6.00	12.00	1.00	1.00	1.00	1.00	1.00	1.00	1.00	1.00
KULIKOWSKI, Adolph-Katarzyna	—	—	—	—	—	—	—	—	—	—
LABOWICZ, Wincenty-Rozalia	8.00	12.00	1.00	1.00	1.00	1.00	1.00	1.00	1.00	1.00
LABOWICZ, Jan	6.00	—	—	—	—	—	—	—	—	—
LANKIEWICZ, Frank	6.00	1.00	—	—	—	—	—	—	—	—
LANKIEWICZ, Stanley	6.00	—	—	—	—	—	—	—	—	—
LANKIEWICZ, Vert-Jeanette	8.00	12.00	—	1.00	—	—	1.00	—	—	—
LANKIEWICZ, Walter	6.00	—	—	—	—	—	—	—	—	—
LAWRYNOWICZ, William-Mary	10.00	—	—	—	—	—	—	—	—	—
LECH, Chester-Helen	10.00	24.00	2.00	2.00	2.00	2.00	2.00	2.00	2.00	2.00
LEHTO, Milton	10.00	—	—	—	—	—	—	—	—	—
LEHTO, Stella	10.00	—	—	—	—	—	—	—	—	—
LICHORAL, Stanislaw	6.00	—	—	—	—	—	—	—	—	—
LOIKA, Jan	6.00	—	—	—	—	—	—	—	—	—
LOIKA, Zofia	6.00	12.00	1.00	1.00	—	—	—	—	—	—
LOPEZ, Edward-Laura	6.00	4.00	1.00	1.00	—	—	—	—	—	—

"Must I be giving again and again, forever?"
 "Oh no," said the Angel; his glance pierced me through,
 "Just give till the Master stops giving to you."

FAIRWAY RESTAURANT

LEXINGTON ROAD — ROUTE 2A

CONCORD

MASSACHUSETTS

FRAMINGHAM BOTTLING COMPANY

Distributors of

KNICKERBOCKER BEER

and

DAWSON'S BEER and ALE

43 - 45 MELLEN STREET

FRAMINGHAM

MASSACHUSETTS

vs. COMMUNISM—Sixth, be smart in your attitude toward Communism and the Communists. Don't be fooled by their words. Remember that they will say anything, true or not, if it furthers Communist objectives. Never let your guard be put down, for as long as they adhere to Communist objectives, including world domination, the threat to us is ever present.

HUDSON DRESS SHOP

Fashions in Good Taste

HUDSON

MAYNARD

TOMBENO BROS.

CONCORD, MASSACHUSETTS

Plumbing and Heating

Sheet Metal Work

EMerson 9-4429

EMerson 9-9120

JAY'S SHOE STORE

GREAT ROAD GARAGE

JOHN F. COUGHLIN, Prop.

DODGE and DART

Sales and Service

Telephone TWinoaks 7-8353

vs. COMMUNISM — Seventh, if you should learn about any dangerous Communist activity, report it to the Federal Bureau of Investigation or to other law enforcement officers. Don't try to cope with it yourself.

CAPITOL PLASTICS CO.

GEAR SYSTEMS, INC.

LISTING OF CONTRIBUTORS AT ST. CASIMIR'S	Offering for Grand Annual Collection for 1959	SPECIAL COLLECTIONS FROM MAY 1958 TO MAY, 1959								
		Monthly Collection Total Offering	Seminary	Negro-Indian Missions	Immaculate Conception Shrine in Washington	Missions	Catholic University of America	Diocesan Charities	Peter's Pence	Bishops' War Relief
LYONS, Harold-Laura	8.00	12.00	1.00	1.00	1.00	1.00	1.00	1.00	1.00	1.00
MARCHOCKI, Stanley-Helen	8.00	1.00	1.00	—	—	—	—	—	—	—
MARTINO, Jean	6.00	12.00	1.00	1.00	1.00	1.00	1.00	1.00	1.00	1.00
MARTINO, Dominic-Alice	8.00	12.00	1.00	1.00	1.00	1.00	1.00	1.00	1.00	1.00
McGEE, John-Barbara	—	24.00	1.00	1.00	1.00	1.00	1.00	1.00	1.00	1.00
McKELVIE, Jacqueline	6.00	6.00	1.00	1.00	—	1.00	—	—	—	—
MIKIJANIEC, Joseph-Mary	10.00	12.00	1.00	1.00	1.00	1.00	1.00	1.00	1.00	1.00
MIKUTAJKIS, Helen	6.00	—	—	—	—	—	—	—	—	—
MILEWSKI, Adele	6.00	12.00	2.00	1.00	1.00	1.00	1.00	1.00	1.00	1.00
MILEWSKI, Stephen-Toni	8.00	11.00	1.00	1.00	1.00	1.00	1.00	1.00	1.00	1.00
MILEWSKI, Jan-Michalina	8.00	12.00	—	—	—	—	—	—	—	—
MILEWSKI, Victor	6.00	—	—	—	—	—	—	—	—	—
MINKO, Sophie	7.00	12.00	—	—	—	—	—	—	—	—
MISZKINIS, Antoni	10.00	—	—	—	—	—	—	—	—	—
NAHORSKI, Joseph-Mary	8.00	12.00	1.00	1.00	1.00	1.00	1.00	1.00	1.00	1.00
NOWALK, Alex-Anna	10.00	12.00	1.00	—	1.00	—	—	1.00	1.00	—
NOWALK, Edward	6.00	—	—	—	—	—	—	—	—	—
NOWIK, Alexander-Agata	10.00	12.00	1.00	1.00	1.00	1.00	1.00	1.00	1.00	1.00
NOWIK, Honorata	8.00	12.00	—	—	—	—	—	—	—	—
NOWIK, John	6.00	12.00	1.00	1.00	1.00	1.00	1.00	1.00	1.00	1.00
NOZKA, Jan-Amelia	10.00	—	—	—	—	—	—	—	—	—
O'NEIL, Robert-Stella	8.00	7.00	—	—	—	—	1.00	—	—	1.00
PALAIMA, Peter-Jean	—	3.00	1.00	—	—	—	—	—	—	—
PASZKIEWICZ, Stanley	10.00	—	—	—	—	—	—	—	—	—
PHANEUF, Eugene-Helen	10.00	12.00	1.00	1.00	1.00	1.00	1.00	1.00	1.00	1.00
PIECEWICZ, Antoni-Dorota	16.00	21.00	1.00	1.00	1.00	1.00	1.00	1.00	1.00	1.00
PIECEWICZ, Antonina	6.00	—	—	—	—	—	—	—	—	—
PIECEWICZ, Ben-Celia	8.00	8.00	—	—	—	—	—	—	—	—
PIECEWICZ, Ben-Loretta	8.00	12.00	1.00	1.00	1.00	1.00	1.00	1.00	1.00	1.00
PIECEWICZ, Charles-Jean	8.00	24.00	1.00	1.00	1.00	1.00	1.00	1.00	1.00	1.00
PIECEWICZ, Frances	6.00	—	—	—	—	—	—	—	—	—
PIECEWICZ, Henry-Margaret	—	12.00	2.00	2.00	2.00	2.00	2.00	2.00	2.00	2.00
PIECEWICZ, John (Main Street)	6.00	1.00	—	—	—	—	—	—	—	—
PIECEWICZ, John (Roosevelt Street)	5.00	—	—	—	—	—	—	—	—	—
PIECEWICZ, Joseph-Helen	8.00	12.00	1.00	1.00	—	—	1.00	1.00	—	1.00
PIECEWICZ, Magdalena	6.00	—	—	—	—	—	—	—	—	—
PIECEWICZ, Mary (High Street)	6.00	—	—	—	—	—	—	—	—	—
PIECEWICZ, Mary (Roosevelt Street)	5.00	11.00	—	—	—	—	—	—	—	—
PIECEWICZ, Michal-Franciszka	8.00	—	—	—	—	—	—	—	—	—
PIECEWICZ, Peter-Margarite	8.00	11.00	—	—	—	1.00	—	—	—	—
PIECEWICZ, Phyllis	6.00	—	—	—	—	—	—	—	—	—
PIECEWICZ, Stanley-Jeanne	8.00	7.00	1.00	1.00	—	1.00	—	—	—	1.00
PIKULA, Stanley-Mary	10.00	6.00	.50	.50	.50	.50	.50	.50	.50	.50
PILECKI, Ignacy, Sr.	6.00	12.00	1.00	1.00	1.00	1.00	1.00	1.00	1.00	1.00
PILECKI, Ignacy-Ella	8.00	12.00	1.00	1.00	1.00	1.00	1.00	1.00	1.00	1.00
PILECKI, Joseph-Sophie	10.00	12.00	1.00	1.00	1.00	1.00	1.00	1.00	1.00	1.00
PILECKI, Michael-Eleanor	8.00	12.00	1.00	1.00	1.00	1.00	1.00	1.00	1.00	1.00

"Must I be giving again and again, forever?"
 "Oh no," said the Angel; his glance pierced me through,
 "Just give till the Master stops giving to you."

SAVE AT RAY'S
Tank Car Buyer of Quality Products

RAY'S SERVICE STATION

76 POWDER MILL ROAD
MAYNARD MASSACHUSETTS
Telephone TWinoaks 7-9844
J. TANNUZZO, Prop.

SEGAL'S GALE SHOP

Where You Can Shop With Confidence

101 MAIN STREET
Telephone TWinoaks 7-8371

vs. COMMUNISM — Eighth, in choosing your life work, give serious consideration to the occupations that are important in giving you an opportunity to influence others, such as government, labor relations, education, and the creative end of newspapers, magazines, books, radio, motion pictures and television — even though your income may not be as high as in some other fields. You will be amply rewarded by the realization that you are rendering vital service to your country. Communists try to place themselves in such key positions in order that they might exercise influence.

ERKKINEN BUICK CO.

BUICK OPEL

Sales and Service

GREAT ROAD

STOW MASSACHUSETTS
TWinoaks 7-7822

All Roads Lead To Mecca's

**MAYNARD & ACTON
OIL COMPANY, INC.**

HEATING OILS

Oil Burners - Sales - Service

68 CENTRAL STREET SOUTH ACTON
COlonial 3-4311

JOHN C. KING AGENCY

Insurance and Bonds

FOWLER BUILDING 74 MAIN STREET
MAYNARD, MASSACHUSETTS
Telephone TWinoaks 7-8200

JENKINS REAL ESTATE

24 LINCOLN STREET MAYNARD
TWinoaks 7-7094

vs. COMMUNISM — Finally, recognize and accept your deep responsibility as a citizen of the nation that leads the free world. Be sure to take an active part in public affairs. When you are eligible to vote, always cast your ballot in every primary and election and vote for those you believe to be the best type of citizen. Work for such candidates. Run for office yourself. By making democracy strong, you will help to build the most effective bulwark against Communism.

WHITMAC FURNITURE CO.

Always Courteous Service

161 MAIN STREET
MAYNARD MASSACHUSETTS
Telephone TWinoaks 7-7232
Lowest Prices on Famous Name Brands
FURNITURE - APPLIANCES

LAFFIN'S GARAGE

YOUR LOCAL CHEVROLET DEALER

WEST ACTON
COlonial 3-4357

LISTING OF CONTRIBUTORS AT ST. CASIMIR'S	SPECIAL COLLECTIONS FROM MAY 1958 TO MAY, 1959									
	Offering for Grand Annual Collection for 1959	Monthly Collection Total Offering	Seminary	Negro-Indian Missions	Immaculate Conception Shrine in Washington	Missions	Catholic University of America	Diocesan Charities	Peter's Pence	Bishops' War Relief
PILECKI, Victor-Eva	8.00	12.00	1.00	1.00	1.00	1.00	1.00	1.00	1.00	1.00
PIOTROWSKI, Wladyslaw-Emilia	8.00	—	—	—	—	—	—	—	—	—
PIUTA, Stanislaw	6.00	10.00	—	—	—	—	—	—	—	—
PLESKOWICZ, Antonina	6.00	12.00	1.00	1.00	1.00	1.00	1.00	1.00	1.00	.50
PLESKOWICZ, Stanley	8.00	12.00	.50	.50	.50	.50	.50	.50	.50	.50
POZARYCKI, August-Mary	—	—	—	—	—	—	—	—	—	—
POZARYCKI, Helen	6.00	1.00	—	—	—	—	—	—	—	—
POZERYCKI, Joseph-Theresa	8.00	10.00	1.00	1.00	—	—	—	—	—	—
POZERYCKI, Maryanna	6.00	—	—	—	—	—	—	—	—	—
POZARYCKI, Victor-Angelina	10.00	12.00	1.00	1.00	1.00	1.00	1.00	1.00	1.00	1.00
PRONKO, Piotr, Sr.	6.00	12.00	.50	.50	.50	.50	.50	.50	.50	.50
PRONKO, Peter-Eloise	8.00	12.00	1.00	1.00	1.00	1.00	1.00	1.00	1.00	1.00
PUFFER, Edward-Mary	—	24.00	1.00	1.00	1.00	1.00	1.00	1.00	1.00	1.00
PUGSLEY, Wanda	6.00	1.00	1.00	—	—	—	—	—	—	—
PYSZKA, Wacław-Sophie	8.00	12.00	1.00	1.00	1.00	1.00	1.00	1.00	1.00	1.00
ROGERS, Mary	8.00	1.00	—	—	—	—	—	—	—	—
ROGERS, Albin-Joan	8.00	12.00	—	—	—	—	1.00	—	—	—
ROMANOWSKI, Edward-Alliean	—	—	—	—	—	—	—	—	—	—
ROSKO, John-Sophie	8.00	4.00	1.00	1.00	1.00	—	—	—	—	—
RYCHLIK, Bernard	6.00	24.00	1.00	1.00	1.00	1.00	1.00	1.00	1.00	1.00
RYCHLIK, Eleanor	6.00	24.00	1.00	1.00	1.00	1.00	1.00	1.00	1.00	1.00
RYCHLIK, Frank-Genevieve	8.00	24.00	1.00	1.00	1.00	1.00	1.00	1.00	1.00	1.00
RYCHLIK, Leonard	6.00	24.00	1.00	1.00	1.00	1.00	1.00	1.00	1.00	1.00
SABANSKI, Albert-Helen	6.00	—	—	—	—	—	—	—	—	—
SAWKA, Michael	6.00	—	—	—	—	—	—	—	—	—
SEBASTYNOWICZ, John-Lena	8.00	12.00	1.00	1.00	1.00	1.00	1.00	1.00	1.00	1.00
SEBASTYNOWICZ, John, Sr.	6.00	12.00	—	—	—	—	—	—	—	—
SELICKI, Michal	6.00	—	—	—	—	—	—	—	—	—
SIEMIENIAK, Stanislaw	6.00	—	—	—	—	—	—	—	—	—
SIENKIEWICZ, Helena	6.00	12.00	1.00	1.00	1.00	1.00	1.00	1.00	1.00	1.00
SIERGIEJ, Rafal-Dominika	8.00	4.00	—	—	—	—	—	—	—	—
SILKONIS, Frank-Marguerite	8.00	—	—	—	—	—	—	—	—	—
SINICKI, Antoni-Anna	—	—	—	—	—	—	—	—	—	—
SIUTA, Stanislaw-Wladyslawa	10.00	12.00	1.00	1.00	1.00	1.00	1.00	1.00	1.00	1.00
SLABYSZ, Milton	6.00	—	—	—	—	—	—	—	—	—
SLABYSZ, Stanley-Mary	8.00	—	—	—	—	—	—	—	—	—
SMAHA, Michael-Mary	8.00	12.00	—	—	—	—	—	—	—	—
SMALE, Robert-Broncia	8.00	12.00	1.00	1.00	1.00	1.00	1.00	—	—	1.00
SOKOLOWSKI, Boleslaw-Mary	10.00	—	—	—	—	—	—	—	—	—
SOKOLOWSKI, Franciszek	8.00	12.00	—	—	—	—	—	—	—	—
SOKOLOWSKA, Frances	6.00	7.00	—	—	—	—	—	—	—	—
SOKOLOWSKA, Malwina and son John	5.00	12.00	1.00	1.00	1.00	1.00	1.00	1.00	1.00	1.00
SOROKA, Ignacy-Bronislawa	10.00	12.00	1.00	1.00	1.00	1.00	1.00	1.00	1.00	1.00
SOROKA, Walter-Helen	10.00	—	—	—	—	—	—	—	—	—
STADES, William-Mary	8.00	12.00	1.00	1.00	1.00	1.00	1.00	1.00	1.00	1.00
STASZEWSKI, Stanley	6.00	—	—	—	—	—	—	—	—	—
STASZEWSKI, Stephen-Dorothy	8.00	—	—	—	—	—	—	—	—	—
STEFANOWICZ, Jan-Zofia	8.00	8.00	—	—	—	—	—	—	—	—

"Must I be giving again and again, forever?"
 "Oh no," said the Angel; his glance pierced me through,
 "Just give till the Master stops giving to you."

MacRAE FURNITURE COMPANY

Specializing in
Early American and Colonial
Pine - Maple - Cherry

BOSTON POST ROAD, SUDBURY, MASS.

HIlltop 3-6449

MASCIARELLI'S

Jewelry, Furniture and Appliances

63 NASON STREET

MAYNARD

MASSACHUSETTS

Telephone TWinoaks 7-8414

vs. COMMUNISM — Communism presents the greatest challenge to the youth of today. I am confident that you, knowing the true meaning of Communism, will meet the challenge.

TUTTLE'S FLORIST SHOP

6 ISAAC DAVIS WAY

ACTON CENTER

COlonial 3-5293

Caterer for All Occasions

THE YANKEE CHEF

Superlative Food

Artistic Service

MRS. LEO E. WHITE, Prop.

LIBERTY TREE HOUSE

Also available on our premises

"THE LIBERTY ROOM"

LIBERTY STREET

SOUTH ACTON

MASSACHUSETTS

COlonial 3-5225

WILSON LUMBER CO.

opposite B & M Station

CONCORD

MASSACHUSETTS

EMerson 9-4290

ROBERT P. WHITEHOUSE, Inc.

1 POWDER MILL ROAD

MAYNARD, MASSACHUSETTS

Telephone TWinoaks 7-9875

vs. COMMUNISM — But it is not enough just to be against Communism — We must be for something. Let's be for America. All the way! We will never overcome Communism merely by condemning it. We must prove by our lives that God is a living reality.

Telephone TWinoaks 7-2271

GRUBER BROS. CO.

FURNITURE

Everything For The Home

MAIN STREET

MAYNARD

MASSACHUSETTS

BUSCEMI'S MARKET

BEER

WINE

179 MAIN STREET

MAYNARD

Open Evenings

Free Delivery

TWinoaks 7-7871

LISTING OF CONTRIBUTORS AT ST. CASIMIR'S	SPECIAL COLLECTIONS FROM MAY 1958 TO MAY, 1959									
	Offering for Grand Annual Collection for 1959	Monthly Collection Total Offering	Seminary	Negro-Indian Missions	Immaculate Conception Shrine in Washington	Missions	Catholic University of America	Diocesan Charities	Peter's Pence	Bishops' War Relief
STEFANOWICZ, Jozef	10.00	1.00	—	—	—	—	—	—	—	—
SZCZERZEN, Anna	6.00	12.00	—	—	—	—	—	—	—	—
SZCZERZEN, Michael	8.00	12.00	—	—	—	—	—	—	—	—
SZCZERZENIA, John-Mary	8.00	12.00	1.00	1.00	1.00	1.00	1.00	1.00	1.00	1.00
SZEBUNKA, Adam	5.00	—	—	—	—	—	—	—	—	—
TOMYL, Albert	6.00	—	—	—	—	—	—	—	—	—
TOMYL, Ben	6.00	—	—	—	—	—	—	—	—	—
TOMYL, Teresa	6.00	12.00	.50	.50	.50	.50	.50	1.00	.50	1.00
TRAKIMAS, Stanley-Sophie	8.00	12.00	1.00	1.00	1.00	1.00	1.00	1.00	1.00	1.00
TROISL, Edward-Mary	8.00	12.00	—	—	—	—	—	—	—	—
TROSKEY, Dorothy	7.00	12.00	—	—	—	—	—	—	1.00	—
TROSKEY, Stephen-Veronica	8.00	24.00	1.00	1.00	1.00	1.00	1.00	1.00	1.00	1.00
VINCENT, Joseph-Jennie	6.00	12.00	1.00	1.00	1.00	1.00	1.00	1.00	1.00	1.00
WALUK, Mary	6.00	—	—	—	—	—	—	—	—	—
WARSEWICZ, Anthony-Mary	6.00	12.00	1.00	1.00	1.00	1.00	1.00	1.00	1.00	1.00
WASILUK, Fred-Geraldine	8.00	6.00	—	—	—	—	1.00	1.00	1.00	1.00
WASILUK, Stefania	5.00	—	—	—	—	—	—	—	—	—
WASIUK, Edwin-Helen	8.00	13.00	2.00	2.00	1.00	1.00	1.00	1.00	1.00	1.00
WASIUK, Jan	7.00	—	—	—	—	—	—	—	—	—
WASIUK, Joseph, Jr.	6.00	12.00	1.00	1.00	1.00	1.00	1.00	1.00	1.00	1.00
WASIUK, Joseph-Betty	6.00	—	—	—	—	—	—	—	—	—
WASIUK, Joseph, Sr.	8.00	12.00	1.00	1.00	1.00	1.00	1.00	1.00	1.00	1.00
WASIUK, Ksawera	6.00	24.00	3.00	3.00	3.00	3.00	3.00	3.00	3.00	3.00
WASIUK, Stephen-Laiti	8.00	12.00	1.00	1.00	1.00	1.00	1.00	1.00	1.00	1.00
WASIUK, Teresa	6.00	24.00	2.00	2.00	2.00	2.00	2.00	2.00	2.00	2.00
WASIUK, Walter-Laura	8.00	12.00	1.00	1.00	1.00	1.00	1.00	1.00	1.00	1.00
WASIUK, William	6.00	—	—	—	—	—	—	—	—	—
WILLIAMS, John-Josephine	8.00	12.00	1.00	1.00	1.00	1.00	1.00	1.00	1.00	1.00
WOJSZNIS, Edward-Anna	8.00	12.00	1.00	1.00	1.00	1.00	1.00	1.00	1.00	1.00
WOJSZNIS, John-Dorothy	8.00	12.00	1.00	1.00	1.00	1.00	1.00	1.00	1.00	1.00
WOJSZNIS, Joseph	6.00	9.00	1.00	—	1.00	—	1.00	—	—	—
WOJSZNIS, Josephine	6.00	11.00	1.00	—	1.00	1.00	1.00	1.00	1.00	—
WOJSZNIS, Mary	6.00	12.00	1.00	—	1.00	1.00	1.00	1.00	1.00	—
WOJTKIEWICZ, Jennie	6.00	12.00	1.00	1.00	—	1.00	1.00	1.00	1.00	—
WOJTKIEWICZ, John-Jennie	8.00	12.00	1.00	1.00	1.00	1.00	1.00	1.00	1.00	1.00
WOJTKIEWICZ, Peter-Louise	8.00	12.00	1.00	1.00	1.00	1.00	1.00	1.00	1.00	1.00
WOJTKIEWICZ, Stefania	6.00	—	—	—	—	—	—	—	—	—
WORONIECKI, Antonina	10.00	1.00	—	—	—	—	—	—	—	—
WOZNIAC, Stephen-Gladys	10.00	24.00	2.00	1.00	1.00	2.00	2.00	2.00	1.00	2.00
ZANCEWICZ, John-Irene	8.00	5.00	1.00	1.00	1.00	—	—	—	—	—
ZANCEWICZ, Stanley-Anna	8.00	12.00	1.00	1.00	1.00	1.00	1.00	1.00	1.00	1.00
ZANCEWICZ, Walter-Helen	8.00	12.00	—	1.00	1.00	1.00	1.00	1.00	1.00	—
ZANIEWSKI, John	6.00	8.00	1.00	—	—	—	1.00	1.00	1.00	1.00
ZANIEWSKI, Mary	6.00	14.00	1.00	—	—	—	2.00	2.00	2.00	2.00
ZANNELLI, Sophie	6.00	—	—	—	—	—	—	—	—	—
ZAWADZKI, Siergiej-Mary	10.00	12.00	—	—	—	—	—	—	—	—
ZELUKIEWICZ, Anna	6.00	12.00	1.00	1.00	1.00	1.00	1.00	1.00	1.00	1.00
ZWIRBLE, Genowefa	6.00	12.00	1.00	1.00	1.00	1.00	1.00	1.00	1.00	1.00
ZWIRBLE, Stanley	6.00	12.00	1.00	1.00	1.00	1.00	1.00	1.00	1.00	1.00

"Must I be giving again and again, forever?"
 "Oh no," said the Angel; his glance pierced me through,
 "Just give till the Master stops giving to you."

JOHNSON PHARMACY

The Rexall Store

30 NASON STREET

MAYNARD

Telephone TWinoaks 7-2832

LITTLEFIELD INSURANCE AGENCY

AL LUCOT

GENERAL INSURANCE

100 MAIN STREET

Tel. 7-2711

D & M SHOE COMPANY

HUDSON

LEXINGTON SAND and GRAVEL

GRATIAS AGAMUS — We are debtors to so many for so much. No one can adequately repay for the good will that has been shown to the parish of Saint Casimir. We feel humble in our gratitude. We thank our parishioners for their zeal and for their loyalty. We thank all of our friends for the many things they have done to lighten our hardships. We thank our Advertisers. We commend them all to Almighty God to Whom we send daily thanks in the Holy Sacrifice of the Mass for the many good people He has given us as friends.

RUSSO'S RESTAURANT

FRANCE'S FILLING STATION

FIRST NATIONAL STORES

IRENE'S STITCH-IT SHOP
ALTERATIONS - CLEANING - PRESSING

Zipper Repairing

90 1/2 REAR, MAIN STREET

MAYNARD, MASS.

TWinoaks 7-2600

J. BILANCIERI and SONS

Builders of Fine Homes

MARLBOROUGH and HUDSON

Telephone Hudson 1478

HERVE L. BOULE, Agent

INSURANCE OF ALL KINDS

185 MAIN STREET
MARLBOROUGH, MASSACHUSETTS

Telephone 490

When God measures man, He puts the tape around the heart, not the head.

Ceramic, Aluminum, Steel and Plastic Wall Tile

B & M TILE CO.

HUDSON, MASS.

"JOE" BARREIRA
25 Gates Avenue

Tel. Hudson 1494-M

"BILL" MASCIARELLI
266 Main Street

Tel. Hudson 1674-W

TOBY CARAGIAN

Builder

MARLBORO, MASSACHUSETTS

HUnter 5-2929

Master Plumber

Telephone 193-W

DONALD E. BUTLER

CRANE

PLUMBING - HEATING

and

OIL BURNERS

344 LINCOLN STREET

MARLBORO, MASS.

TROTTA BROS.

Building Contractors

MARLBORO, MASSACHUSETTS

HUnter 5-0315

HUnter 5-4622

If we work upon marble, it will perish. If we work upon brass, time will efface it. If we rear temples, they will crumble to dust. But if we work upon men's immortal minds, if we imbue them with high principles, with the just fear of God and love of their fellow men, we engrave on those tablets something which no time can efface, and which will grow brighter and brighter to all eternity.

— Daniel Webster



Uncle Pete Carbone's Twin Tree Cafe

The Place To Get Southern Fried Chicken
Specializing in Fried Clams and Scallops

34 POWDER MILL ROAD

On Route 62

MAYNARD

MASSACHUSETTS

Telephone TWinoaks 7-9851

For every tear you wipe from a child's eye,
A Star will Light in Heaven.

2024.429